

# EYE Examination Simulator

Japanese Patent No.3429274

The Eye Examination Simulator is an innovative trainer for fundus examination, designed to allow examination of eyegrounds with the physician's own ophthalmoscope. Various cases can be set up for trainees using combinations of slides, depth and pupil diameter.

Soft and supple material allows hands-on simulation of real examination procedures, such as raising the eyelid.

Production supervision:

Japan Society for Medical Education Working Group with the cooperation of:  
Kansai Medical University Department of Ophthalmology

## 10 cases of fundus slides

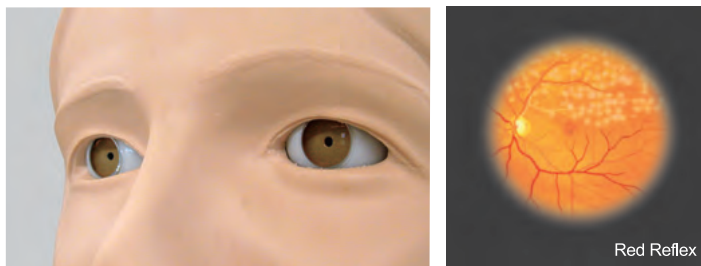
10 cases of fundus slides are provided for training in common eye disease identification.

The slides are processed from actual clinical images in order to reproduce appropriate representative views in the eye unit.

## Lens-equipped eyeball units

Suitable for training with all types of direct ophthalmoscopes.

The lens-equipped eyeball units reproduce the visual axis close to that of the human eye providing a realistic eye-ground view.

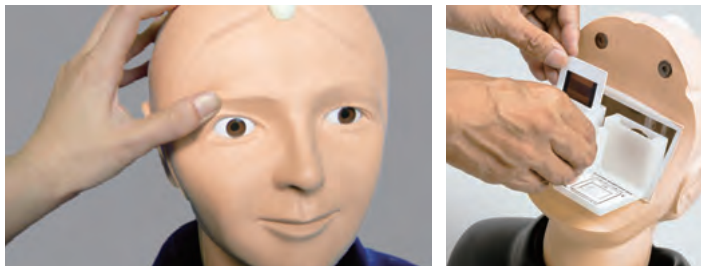


## Soft and supple manikin

Soft and supple manikin material allows hands-on practice of examination procedures, such as raising the eyelid.

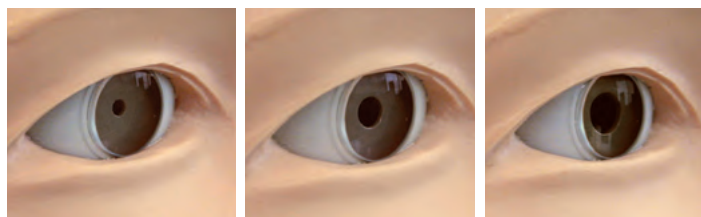
## Short site and far site

The depth of the fundus slides can be set in 3 steps, showing differences between hyperopic, normal and myopic views.



## Papillary dilation and contraction

The size of pupils is to be changed in 3 steps (2, 3.5 and 5mm)



Small Pupil Size (2mm)

Medium Pupil Size (3.5mm)

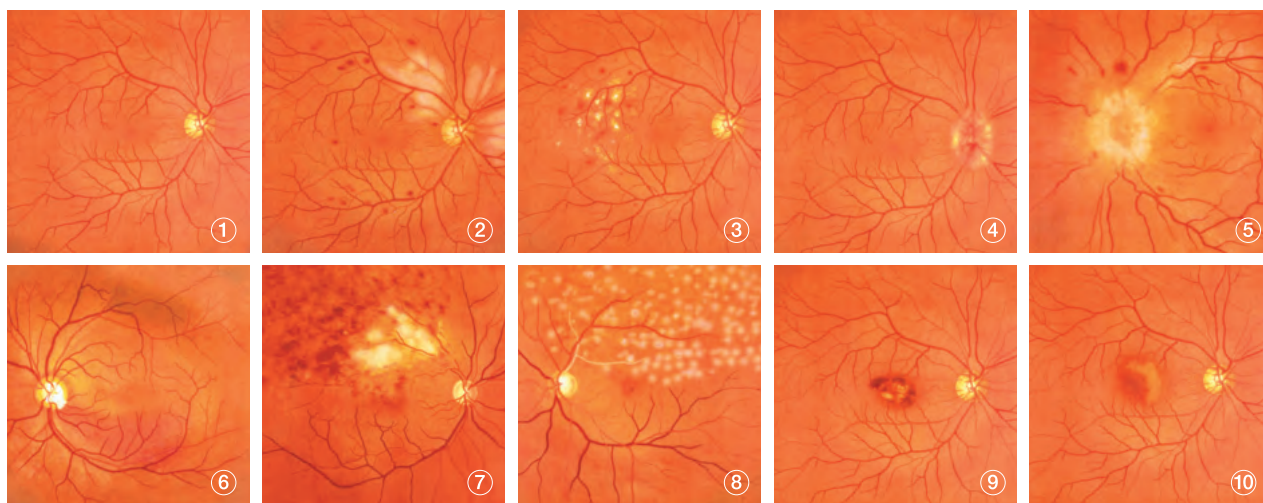
Large Pupil Size (5mm)



Change the diameter of the pupils with the dial on the forehead.

## Cases Slides (set of 10)

- ① Normal eye-ground
- ② Hypertensive retinopathy: arteriolar vasoconstriction grade 3, arteriosclerosis grade 1, hemorrhages and cotton wool spots, simple vein concealment.
- ③ Simple/background diabetic retinopathy: microaneurysm, hemorrhages and hard exudates
- ④ Papilloedema (chronic phase)
- ⑤ Papilloedema (acute phase)
- ⑥ Glaucomatous optic atrophy: glaucomatous optic disc cupping and nerve fiber defect
- ⑦ Retinal vein occlusion (acute phase): flame-shaped hemorrhage and cotton wool spots
- ⑧ Retinal vein occlusion (after retinal laser photocoagulation)
- ⑨ Toxoplasmosis: retinochoroiditis
- ⑩ Age-related macular degeneration: macular exudates and subretinal hemorrhage



## EYE Examination Simulator **M82**



### Set includes:

- 1 manikin head and shoulder
- 1 pupil switch
  - 3 steps (2,3,5 and 5 mm diameter)
  - 1 slide holder with 3 steps depth setting
- 1 set of case slides (10 cases)
- 1 slide duster
- 1 carrying case
  - manikin size: 42 x 21.5 x 38 H cm, 2 kg
  - packing size: 47 x 30 x 55 H cm, 4 kg

\*An ophthalmoscope is not supplied with the unit.

### Replacement parts

11220-010 replacement fundus case slides  
(set of 10 cases)

Specifications are subject to change.

### KYOTO KAGAKU

15 Kitanechoya-cho, Fushimi-ku, Kyoto,  
612-8388, JAPAN  
Tel: +81-75-605-2510  
Fax: +81-75-605-2519  
www.kyotokagaku.com  
rw-kyoto@kyotokagaku.co.jp