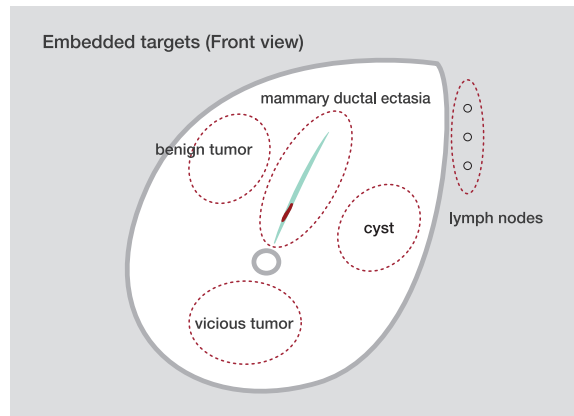


Breast Ultrasound Examination Phantom "BREAST FAN"

The BREASTFAN is a unique phantom for training in basic breast ultrasound examination.

Simulated targets with different echogenicities are embedded in the phantom mammary gland.

In this phantom you may visualize the following: the subcutaneous adipose, the mammary gland, the galactophore, Cooper's ligament, the retromammary adipose, the costae, the clavicle, the pectoralis major, the lung, and the lymph nodes at axilla.

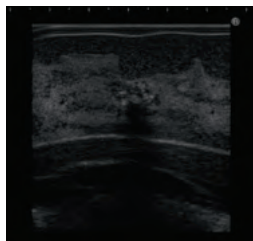


Set includes:

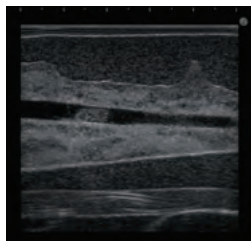
- 1 Breast phantom
- 1 carrying case
- 1 tutorial manual (DVD)

phantom size:

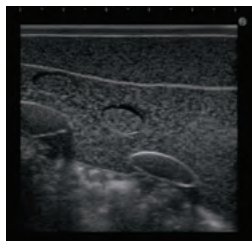
- approx, 19 x 22 x 7 Hcm, 3.6kg
- packing size:
- approx, 35 x 36 x 24 Hcm, 6kg



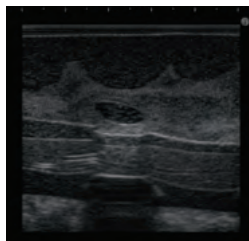
Vicious Tumor



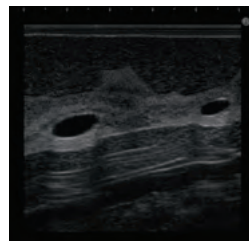
Mammary Ductal Ectasia



Lymph Nodes



Benign Tumor



Cyst

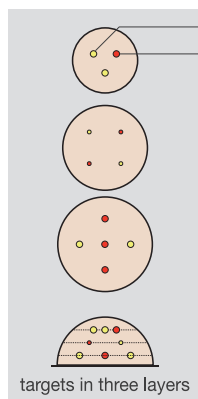
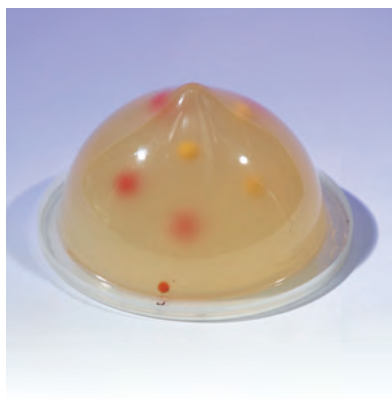
Featured Products Coming Soon...

Biopsy Training Model Ultrasound Guided Needle Biopsy

We would like to introduce to you our new training phantom for ultrasound guided breast biopsy.

Simulated lumps with different echogenicities can be aspirated by biopsy needles.

This model provides a combination of hands-on and visual training. This phantom is fantastic training for the usage of the scanner and needle. The image is excellent quality.



high-echo target
anechoic target

KYOTO KAGAKU

15 Kitanechoya-cho, Fushimi-ku Kyoto,
612-8388, JAPAN
Tel: +81-75-605-2510
Fax: +81-75-605-2519
www.kyotokagaku.com
rw-kyoto@kyotokagaku.co.jp