

M93UB



# CVC Insertion Simulator II

Conduct a variety of CVC insertion and management simulations with the assistance of 3 interchangeable pads



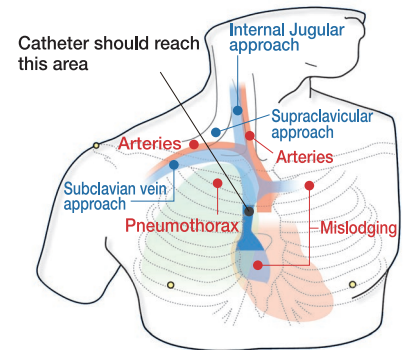
## Product Supervision

Masahiro Tanabe, M.D., Ph.D., Professor Director General Medical Education Center Chiba University School of Medicine

Kinya Sando, M.D., Ph.D., Professor Director Department of Human Dietetics Graduate School of Human Science Osaka Shoin Women's University

Masanori Hoki, M.D., Ph.D., Professor Department of Human Dietetics Graduate School of Human Science Osaka Shoin Women's University

Joho Tokumine, M.D.Ph.D., Department of Anesthesia, Kawatetsu Chiba Hospital



Catheter should reach this area

## FEATURES

- 1 | Realistic ultrasound-guided CVC
- 2 | Landmark puncture pad with anatomically correct vein bifurcations simulates mechanical complications including pneumothorax, mislodging and artery puncture
- 3 | Transparent anatomical block for anatomical understanding and guide wire manipulation
- 4 | Introductory ultrasound training block to acquire basics of ultrasound guided venous access
- 5 | Both internal jugular and subclavian (axillary) veins are accessible

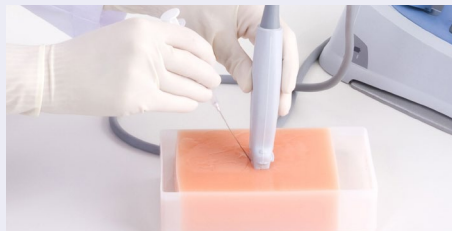
## SKILLS

- | Ultrasound-guided CVC
- | Landmark guided CVC
- | Ultrasound-guided venous access
- | Prevention of mechanical complications

## KEY FEATURES



Transparent anatomical block



Ultrasound training block



Ultrasound puncture pad

## DESCRIPTIONS

### SPECIFICATIONS

Size: W40 x D20 x H 34 cm  
W15.8 x D7.9 x H 13.4inch

Weight: 2.3kg/5lbs

### SET INCLUDES

1 male upper torso manikin	10 red cotton swab
1 landmark puncture pad	10 blue cotton swab
1 ultrasound puncture pad	1 air bulb
1 transparent anatomical block	2 plastic jars
1 introductory ultrasound training block	1 irrigation bottle

### MATERIALS

Soft resin  
Latex free

1 syringe
1 sample syringe
1 sample needle

### RECOMMENDED DEVICES

Ultrasound scanner and needles are not included.

### REPLACEMENT PARTS

11347-119	2 landmark puncture pads
11347-170	2 ultrasound puncture pads
11347-210	2 introductory ultrasound training blocks
11347-240	2 CVC placement pads
11347-250	pulsation unit for CVC placement pad
11347-260	1 pulsation unit (for M93UB)
11347-320	irrigation bottle
11388-400	cotton swab (red, set of 10)
11402-010	cotton swab (blue, set of 10)

