

Male Catheterization/Enema Simulator

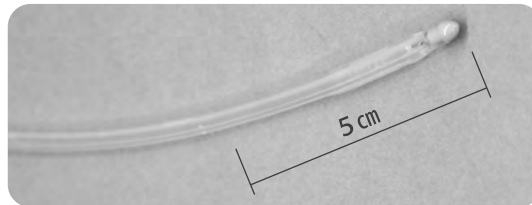
Please read carefully before use

While training sessions



Inserting the catheter

Put the catheter in the tray, drip small quantity of lubricant to its tip. Ensure that about 5cm from the tip is coated by lubricant. Use the lubricant included in the set.



.....
Use 14-16Fr catheter for this model. Using larger catheter causes breakage of the valve.

Please use the genuine lubricant included in the set. Usage of other lubricants will cause damage to the model in a short time as in the following cases:

- Jelly-type lubricants which remain in the model will harden and cause damage to the valves.
- Water-soluble jelly-type lubricants will be washed out during urethral catheterization, which will decrease lubricating ability.

Product code of the genuine lubricant is 11381-800.

Catheterization:

- Recommended catheter size: 14-16Fr.
- Do not use real disinfectant or other medicament. Simulate with water.
- Before inflating the balloon, insert 2cm further from the point that first urine discharge is observed.
- Close the clamps on the irrigation tube and drainage tube for manual bladder compression session.
- Ensure to remove all the tapes and dressings before storage.
- During continuous training sessions on catheterization, add water to the reservoir bottle when necessary.



.....
Discharge the water in the balloon before removing the catheter. Inflated balloon may cause breakage of the valve.



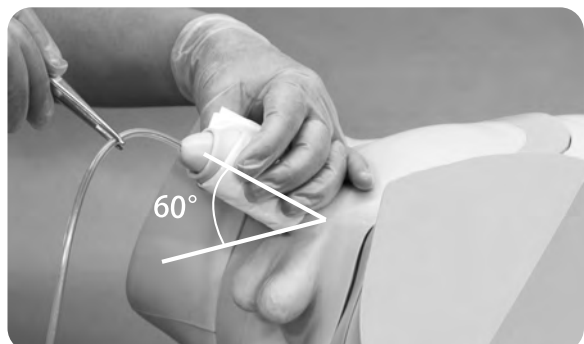
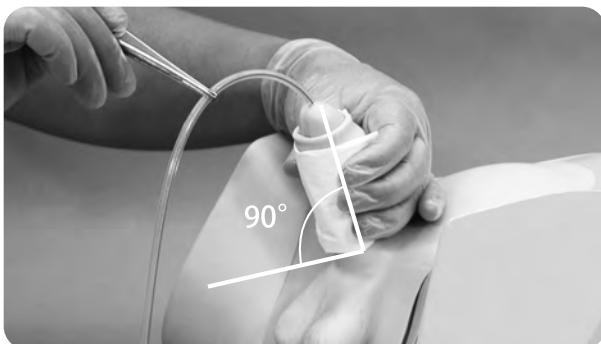
Enema:

- The model is designed for enema training in left lateral position.

Inserting the catheter

Insert the catheter through the meatus urethra holding the penis at about 90 degrees. During the insertion, the resistance that simulates prostate and external sphincter muscle will be felt.

When you feel resistance, lower the penis at about 60 degrees, and insert the catheter while pulling the penis toward you.



Male Catheterization/Enema Simulator

After training

1. Drain the water from the irrigation bottle and detach the irrigation tube.



2. Take out the genitalia unit from the torso manikin.



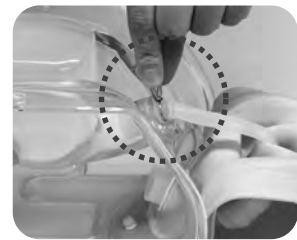
3. Loosen the metal clip and detach the rectum unit from the connector.



4. Disassemble the genitalia unit. To disengage the genital organ frame from the bladder holder, lift the frame with fingers. Then remove the skin with bladder holder from the frame.



5. Peel the skin from the bladder holder, then loosen the clip with fingers and pull out the urethral tube carefully.



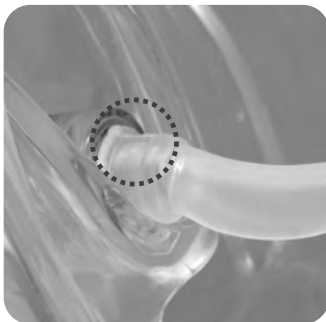
6. Remove the bladder reservoir and detach the tubes. Wipe the valve and the urethral tube to remove the lubricant, using mildly soapy water and let it dry naturally.




7. When the lubricant remains between the skin and male meatus, remove the urethral tube by pulling it, then wipe its surface and inside of the foreskin.



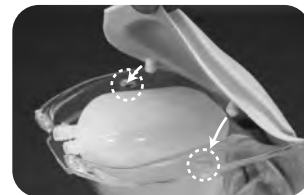
8. Please perform the genitalia unit assembling in the reverse procedure.



To attach the urethral tube to the valve, ensure to place the tube securely so that the projection  on the tube faces upward, over the connector of the valve.



Put the skin over the bladder holder and insert the upper projections of the skin in the upper holes of the holder. To engage the genital organ frame and the bladder holder, push the corner of the frame forward until clicking sound is heard.



■ Main Office and Factory (World Wide)

 **KYOTO KAGAKU co.,LTD**

WEB • www.kyotogagaku.com
E-MAIL • rw-kyoto@kyotokagaku.co.jp

15 kitanechoya-cho Fushimi-ku Kyoto 612-8388, Japan
TEL: +81-75-605-2510
FAX: +81-75-605-2519

■ North and South American regions:

 **KKAmerica**
Kyoto Kagaku America Inc.

WEB • www.kkamerica-inc.com
E-MAIL • info@kkamerica-inc.com

3109 Lomita Boulevard, Torrance, CA 90505-5108, USA
TEL: +1-310-325-8860
(Toll-free in North America: 877-648-8195)
FAX: +1-310-325-8867