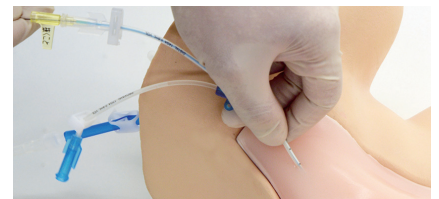
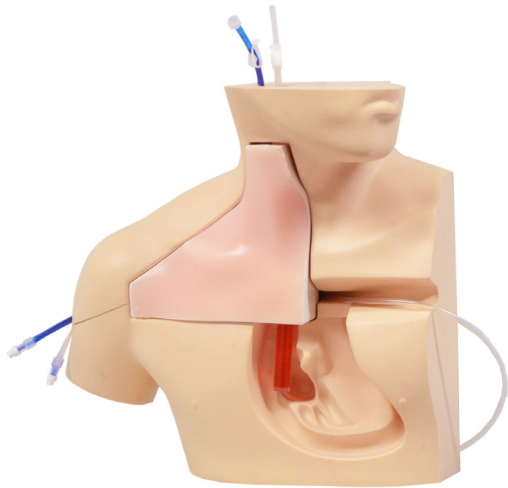


M93C

# CVC Insertion Simulator III

**CVC III facilitates a sequence of uninterrupted simulation experience for specialist training**

From aseptic field preparation to final catheter placement



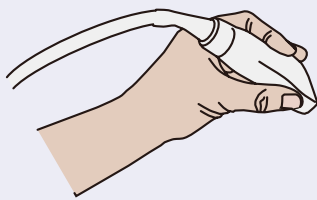
## FEATURES

- 1 | Insertion practice is repeatable to obtain the best technique for patient safety.
- 2 | Both landmark guided insertion and ultrasound guided techniques can be practiced.
- 3 | The frictionless tissue-like simulation pad to facilitate the realistic sensation of CVC placement.

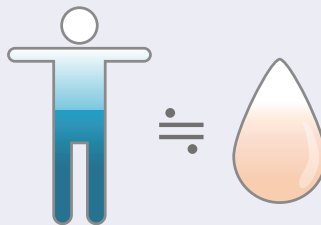
## SKILLS

- Take complete steps to a successful CVC insertion
- | Perform hand hygiene practices and prepare aseptic field
  - | Decide on insertion site via ultrasound guidance or observation and palpation of landmarks
  - | Insertion under ultrasound guidance or via landmark technique
  - | Confirm flashback
  - | Advance guidewire and sheath
  - | Insert catheter

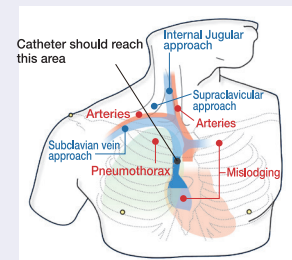
## KEY FEATURES



Ultrasound compatible



Pad material simulates features of human tissue



Anatomically accurate features including 3 insertion sites and rib cage

## DESCRIPTIONS

### SPECIFICATIONS

Size: W40 x D20 x H 34 cm  
W15.7 x D8x H13.5 inch

### SET INCLUDES

1 male upper torso manikin	2 vein tube (blue): 2 type	1 coloring powder (red/blue)
2 CVC placement pad	2 vein pipe	1 sample needle
1 skin for cannulation training	1 pulsation unit (for landmark technique)	1 syringe (2.5ml, 50ml each)
1 transparent anatomical block	1 irrigation bottle (for UG technique)	1 introductory ultrasound training block REAL VESSELS
2 artery tube (transparent): 2 type	1 plastic jar	

### MATERIALS

Soft resin, hydrogel, hard resin  
Latex free

### RECOMMENDED DEVICES

Ultrasound machine and needles are not included.

### REPLACEMENT PARTS

11347-210 2 introductory ultrasound training block REAL VESSELS  
11347-240 2 CVC placement pads  
11347-260 1 pulsation unit (for M93UB)  
11347-320 irrigation bottle