

PH-1C | 41337-300

Pediatric Chest Phantom

Dosimetry

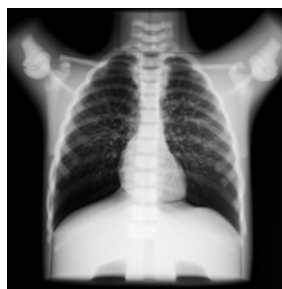
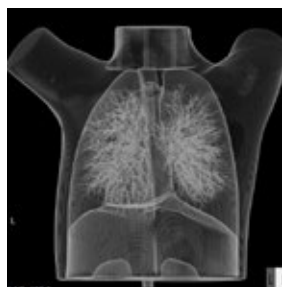
CT

X-ray



CHEST PHANTOMS

Imaging and dosimetry for radiosensitive 5-year-old



SHOW MORE!



FEATURES

- | Two types of interchangeable lung inserts are included
–lung vasculature insert and lung density insert
- | Pencil-shaped ion chamber for CTDI can be set in the mediastinum
- | TLD or RPL dosimeters can be set in the thyroid block and the lung density insert
- | Detachable internal structure allows insertion of variety of pathologies and targets

APPLICATIONS

- | CT
- | Plain X-ray
- | Dosimetry
- | Radiographic interpretation

ANATOMY

Rib, clavicle, spine, mediastinum, scapula, sternum and *pulmonary vessel
*lung vasculature insert only

TLD or RPL dosimeters can be set in the thyroid block



DESCRIPTIONS

SET INCLUDES

1 five-year-old chest torso	1 set of sample images
1 lung vasculature insert: mediastinum with pulmonary vessels	1 storage case
1 lung density insert: mediastinum, lung fields (L · R)	1 manual

SPECIFICATIONS

Phantom size:
32 x 17 x 38 cm
12.6 x 6.7 x 15 in
Phantom weight:
6 kg/13.3 lb

Packing size:
W51 x D43 x H45 cm
W20 x D17 x 17.7 in
Packing weight:
14 kg/ 30 lb

MATERIALS

Soft tissue: urethane based resin (specific gravity: 1.06)
Synthetic bone: epoxy resin (specific gravity: 1.31)
*Phantom has no metal parts or liquid structure

OPTIONAL PARTS

41337-010	Chest plates
41363-020	Storage case
41337-070	Simulated tumors

