

PH-33

## MRI Head Phantom NH

*Life-size head phantom to assess uniformity.*



Conforming to JIS Z 4924

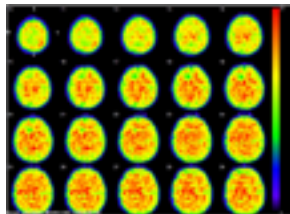
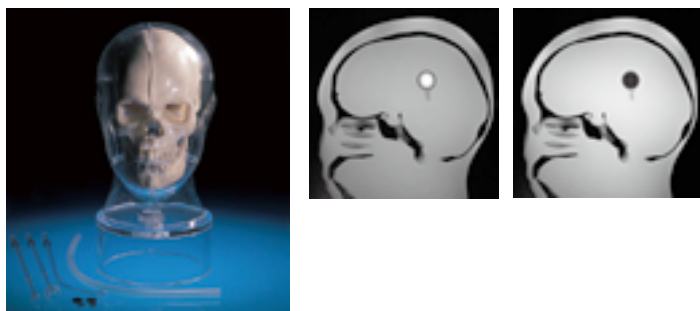
### Specifications

Set Includes:  
1 head phantom  
1 nickel chloride solution  
1 storage case

PH-34

## MRI/NM Head Phantom BHC

*Simulate life-size head images in nuclear medicine and MRI.*



### Specifications

Set Includes:  
1 head phantom  
2 simulated tumor  
(1 cm dia., 2 cm dia. each)  
(0.4 in dia., 0.79 in dia. each)  
1 nickel chloride solution  
1 storage case

Size:  
33 cm height  
12.9 in height

PH-53

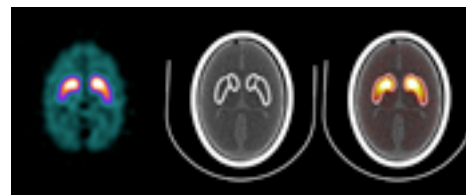
## Brain Phantom IB-20 advanced

*This brain phantom of the striatal region with replicated skull densities of a male and female is useful for uptake ratio calibrations and studying the I-123 DaTSCAN scatter correction techniques.*



### Specifications

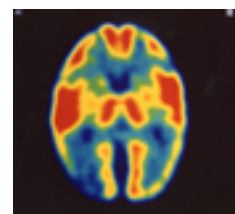
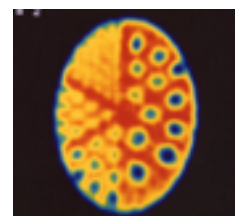
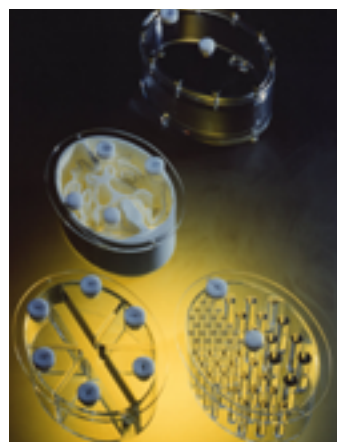
Size:  
inside dimensions  
13.5 x 18.5 cm/5.3 x 7.3 in  
height  
8.8 cm/3.5 in



PH-27

## Brain Phantom IB-10

*A simulated skull section contains a brain slice. The brain comprises artificial grey and white matter, ventricular cavities and orbits. Radioactive solutions may be added to the phantom components. One version of the phantom contains geometrical test pieces.*



### Specifications

Size:  
Skull Cross-section: 20.5 cm x 15.5 cm  
Brain Slice Thickness: 5cm

### Specifications

Size:  
Skull Cross-section: 20.5 cm x 15.5 cm  
Brain Slice Thickness: 5cm