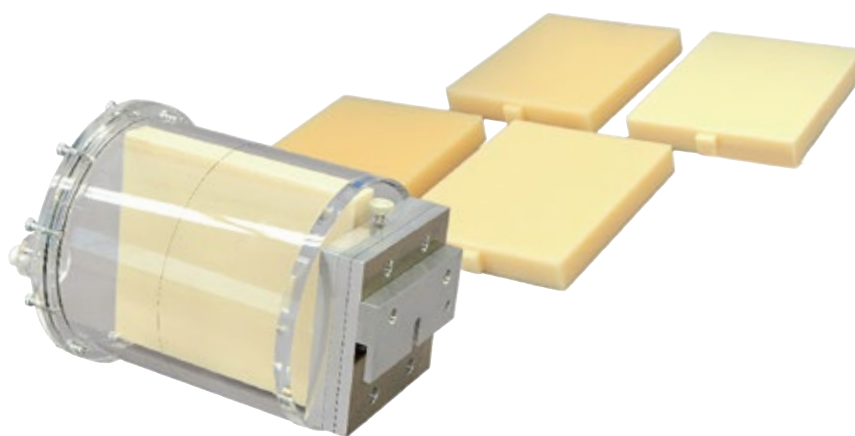


PH-55 | 41920-000

# CT ERF Phantom HIT



**A phantom designed for physical evaluation of iteratively reconstructed images under low CNR**



SHOW MORE!

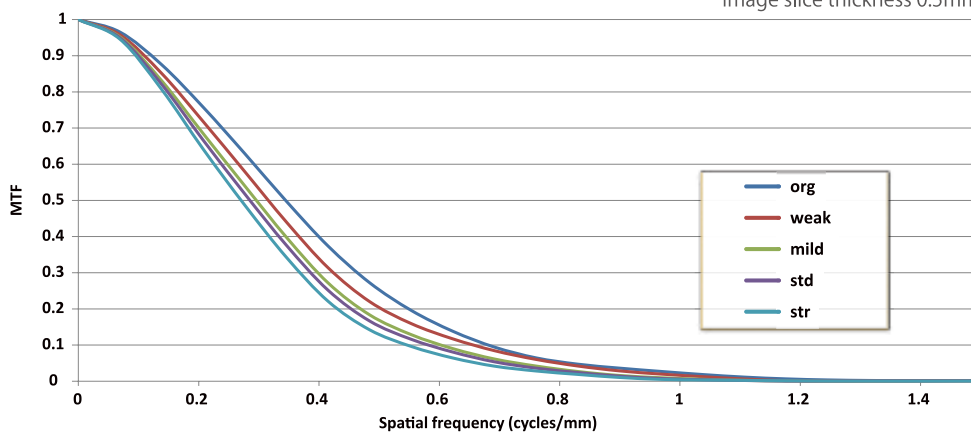
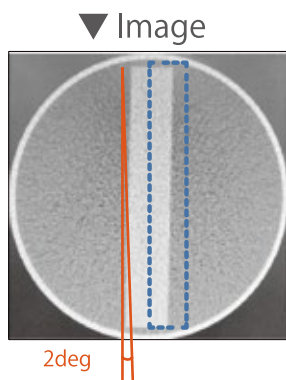


## FEATURES

## APPLICATIONS

- The phantom is designed to physically and quantitatively evaluate iteratively reconstructed images in the low CNR area, such as abdomen, where MTF of PSF is less useful
- The phantom uses edge spread function (ESF) to calculate MTF of the low CNR images, which facilitate assessing performance properties of iteratively reconstructed images under low CNR

▼ Modulation Transfar Funcion  
image slice thickness 0.5mm



## DESCRIPTIONS

### SET INCLUDES

- 1 cylindrical container (200 mm dia.)
- 5 measurement plates
- 1 rotation holder
- 1 fixture for the cylindrical container storage case

### SPECIFICATIONS

Phantom size:  
20 dia. x 25 cm  
7.8 dia. x 9.8 in

Phantom weight:  
4.5 kg/ 10 lb

### MATERIALS

Acrylic resin, polyurethane

### OPTIONAL PARTS



41919-010  
Angle adjustment holder (table-top type)  
Compatible with PH-9

