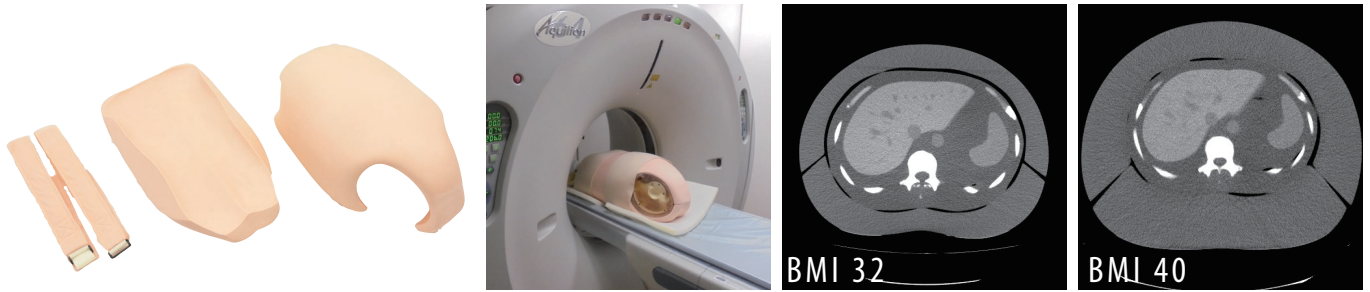


41350-200-16 (BMI 32) / 41350-200-17 (BMI 40)

Optional Parts for PH-2/2B/2E/60

## Body plates

Body plates to simulate a patient of BMI 32 / BMI 40



### FEATURES

| For study of effect of patient size on radiation dose and image quality.

### DESCRIPTIONS

#### SET INCLUDES

- 1 body plate (front)
- 1 body plate (back)
- 2 belts

#### MATERIALS

Urethane based resin (density: 1.06)

#### SPECIFICATIONS

Phantom size:  
W41 x D45 x H28cm  
W16.1 x D17.7 x H11 in

Packing size:  
77 x 48 x 40 cm x 2 boxes  
30.3 x 18.9 x 15.7 in x 2 boxes

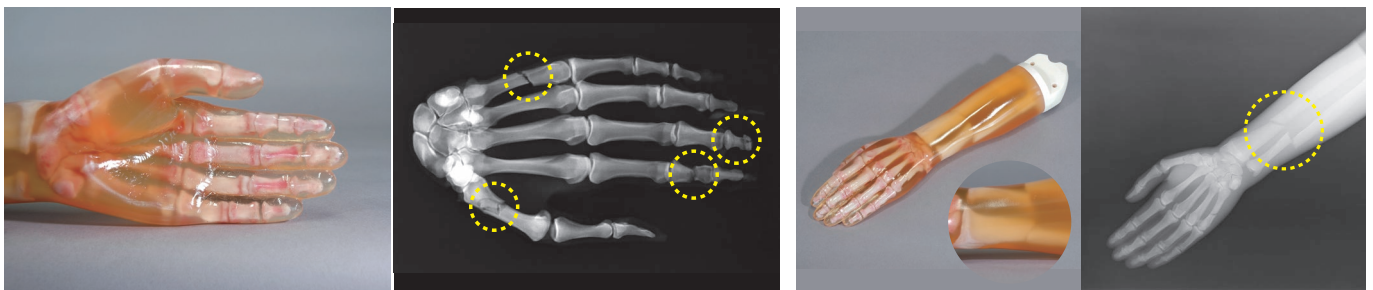
Packing weight:  
41350-200-16(BMI 32): 21 kg / 46.3 lb  
41350-200-17(BMI 40): 34.5 kg / 76 lb

41350-000-11

Optional Parts for PH-2/2B/2E/60

## Fractured Hand/Forearm Phantom PH-2/2B

X-ray phantom for trauma evaluation



### DESCRIPTIONS

#### Bone Fractures:

ulna, radius, first metacarpal, middle phalanx of the index finger, distal phalanx of the first finger (compressed fracture), fifth metacarpal

#### SET INCLUDES

- 1 fractured hand/forearm phantom

#### MATERIALS

Soft tissue: urethane based resin (density: 1.06)  
Synthetic bone: epoxy resin (density: 1.31)  
\*Phantom has no metal parts or liquid structure

41363-070

Optional Parts for PH-2/2B/2E/60

## Storage case 2 (a pair)

