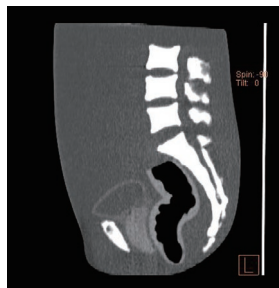
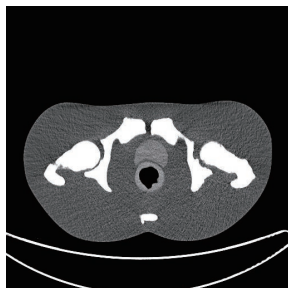


PH-46 | 41362-000

# CT Prostate Phantom



Excellent phantom for therapy planning of prostate cancer



SHOW MORE!



## FEATURES

- | For alignment in Image Guided Radiation Therapy (IGRT)
- | Organs with close-to-human HU facilitate training in CT scanning

## APPLICATIONS

| CT and Corn beam CT

organs	HU at 80KeV
Prostate	50
Seminal vesicles	25
Bladder surface	30
Bladder inside	10
Rectal surface	70
Rectal inner cavity	-800

## ANATOMY

- | Prostate, urinal bladder with simulated internal fluid, seminal vesicles and rectum
- | Bones: L3,L4 and L5, pelvis and femurs (partial)

## DESCRIPTIONS

### SET INCLUDES

- 1 phantom
- 1 set of sample X-ray data (DVD)
- 1 storage case
- 1 manual

### MATERIALS

Soft tissue: urethane resin (density: 1.06)  
 Synthetic bone: epoxy resin (density: 1.31)

### SPECIFICATIONS

Phantom height:  
35 cm / 13.7 in

Packing size:  
W44 x D39 x H42 cm / W17.3 x D15.3 x H16.5 in

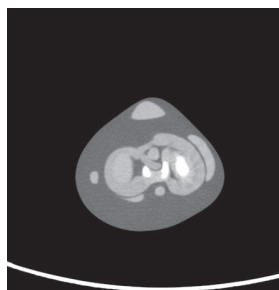
Packing weight:  
27 kg / 59.5 lb

PH-71 | 41935-000

# Knee Ligament Phantom



Detailed knee anatomy with HU of each bone, cartilage, and ligament



SHOW MORE!



## FEATURES

- | Anthropomorphic knee phantom that allows visualization of ligaments and cartilage
- | Close-to-human radiation absorption and HU for each anatomical structure as well as realistic artifacts

## APPLICATIONS

| Plain X-ray  
 | CT

## ANATOMY

femur / tibia / fibula / patella / articular cartilage of patella / meniscus / cruciate ligament / medial collateral ligament / fibular collateral ligament / articular cartilage

## DESCRIPTIONS

### SET INCLUDES

- 1 knee phantom
- 1 storage case
- 1 manual

### MATERIALS

Soft tissue: urethane based resin (density: 1.06)  
 Synthetic bone: epoxy resin (density: 1.31)

### SPECIFICATIONS

Phantom size:  
14 dia. x 45(H) cm  
5.5 dia. x 17.7(H) in

Phantom weight:  
4.5 kg / 10 lb

