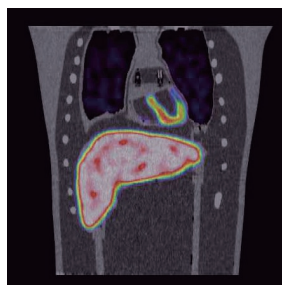


PH-63 | 41927-000

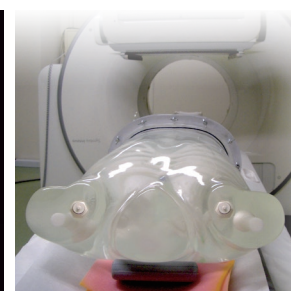
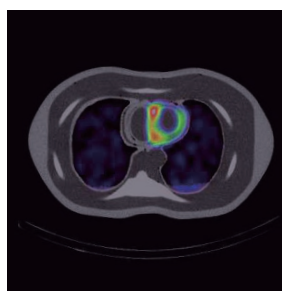
PET/ SPECT

Thorax Phantom for RI

Thorax Phantom for RI is an optimal tool for study in nuclear medicine



SHOW MORE!



FEATURES

Examination of myocardial density through SPECT imaging

- | Verification of myocardial imaging with the use of various RI solution densities
- | Can reproduce image variations of the heart by injecting RI solutions in the liver, kidney and lungs

Examination of RI solution density for simulated tumors

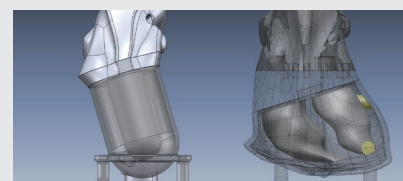
- | The simulated tumors can be inserted into lung, liver and breast
- | Tumors can be filled with FDG/RI solution into the spheres for evaluation of density, size and placement

APPLICATIONS

- | PET
- | Quality management of NM equipment
- | RI solution density for tumor imaging

ANATOMY

- | | |
|---|---|
| <ul style="list-style-type: none"> Liver Lung (right/left) Kidney (right/left) Hot spots (liver, lungs and breast) * Hot spot for PET can be set in liver, lungs and breast. | <ul style="list-style-type: none"> Heart - Anatomical type:
right ventricle, left ventricle and myocardium - Geometric type:
left ventricle and myocardium |
|---|---|



Geometric type

Anatomical type

- | |
|---|
| HU <ul style="list-style-type: none"> Bone: 370HU Lung: -900HU Organ shell material: 100HU, and 1.16g/cm³ in density |
|---|

DESCRIPTIONS

SET INCLUDES

- | | |
|---|--|
| <ul style="list-style-type: none"> 1 thorax body 2 lungs (left and right) 4 hearts 1 liver 2 kidneys 1 rib cage and spine 2 breasts 3 hot spots | <ul style="list-style-type: none"> 1 base S* plastic pins 6 supporting bars 4 flat bar rings for base 5 tubes 1 syringe S* nuts and bolts 1 water tank manual |
|---|--|

*S: Several

MATERIALS

Soft tissue: transparent polyurethane
Lungs: materials with density 0.4 g/cm³
Bone materials: Calcium infused material to provide proper attenuation with use of RI solutions

SPECIFICATIONS

Phantom size:	Phantom weight:
W44 x H69.4 cm	phantom itself: 21 kg / 46.2 lb
W17.3 x H27.3 in	when filled with liquid: 37.5 kg / 82.6 lb