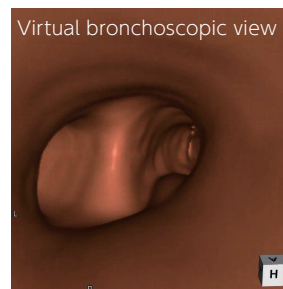
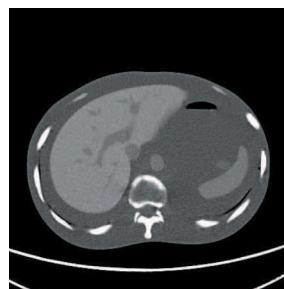
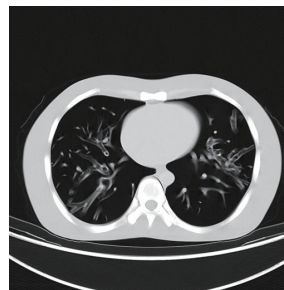


PH-4 | 41324-040

CT Torso Phantom CTU-41



A one-piece anthropomorphic torso phantom with anatomical structures allows various CT approaches including helical scanning



FEATURES

- | One-piece structure of the phantom facilitate study in volume CT scan including helical scan.
- | The phantom can be used for alignment in Image Guided Radiation Therapy (IGRT)

APPLICATIONS

ANATOMY

| Synthetic bones with cartilage
-artificial skull, vertebrae, clavicles, ribs, sternum, scapula, coxal bones, femurs

Internal organs		Hounsfield Number
Soft tissue around each organ		8
Brain	Brain	40
	Ventricles	10
Eye balls		20
Aorta		40
Vena Cava		40
Trachea	Up to the first branch	-800
	The second -the third branch	8
Heart		40
Pulmonary Blood Vassal		8
Cartilage in Costae		90

Internal organs		Hounsfield Number
Liver	Whole	70
	Vein	40
Gallbladder		20
Pancreas		30
Spleen		50
Kidney	Whole	30
	Vein	40
	Urethra	10
Urethra		10
Urinary Bladder		10

DESCRIPTIONS

SET INCLUDES

- 1 CT torso phantom
- 1 set of sample X-ray data (DVD)
- 1 storage case manual

MATERIALS

Soft tissue: urethane based resin (density: 1.06)
Synthetic bone: epoxy resin (density: 1.31)

SPECIFICATIONS

Phantom height: 100 cm / 39.4 in
Phantom weight: 45 kg / 99 lb
Packing size: W119 x D53x H48 cm / W46.9 x D20.9 x H18.9 in
Packing weight: 59 kg / 130lb

