

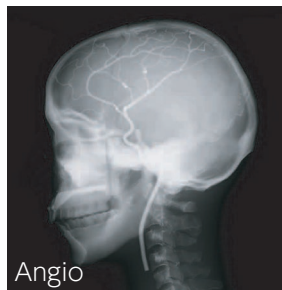
PH-3 | 41309-100 for CT/ 41309-200 for Angio/ 41309-300 for MECT

Angiographic CT Head Phantom ACS



Kyoto Kagaku's best-selling CT head phantom

A new variation added: Head Phantom for MECT, which contains arteries of innovative water equivalent material



FEATURES

- | Three variations of head phantoms with different features for arteries to meet your requirements: CT/ Angiography / Multi energy CT
- | Contrast-enhanced left cerebral arteries are three dimensionally embedded in the brain

APPLICATIONS

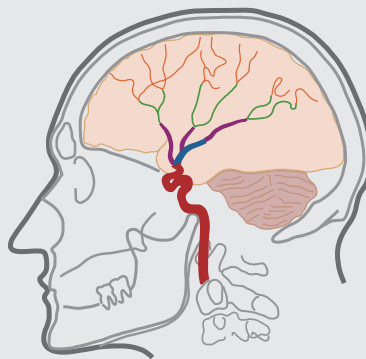
- | CT (41309-100)
- | Angiography (41309-200)
- | Multi-energy CT (41309-300)

ANATOMY

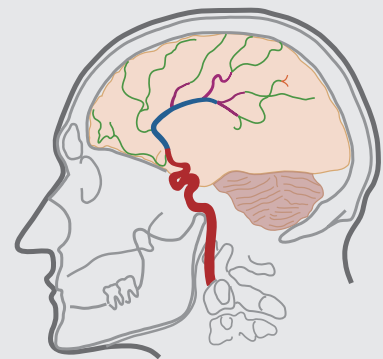
- | A synthetic skull
- | Soft tissue
- | Simulated arteries with contrast medium
 - Left anterior cerebral arteries
 - Left middle cerebral arteries
 - Internal carotid artery
 - Diameters of simulated 0.5-4.0 mm
 - *Arrangement of arteries are the same for all three types.

| HU

Soft tissue	0	Cerebellum	40
Cerebrum	40	Cerebral ventricles	10
Mesencephalon	40	Eye balls	20



Middle cerebral artery



Anterior cerebral artery

DESCRIPTIONS

SET INCLUDES

- 1 head phantom
- 1 set of sample X-ray data (DVD)
- 1 storage case manual

MATERIALS

Soft tissue: urethane based resin
Cervical vertebrae (C1-C7): epoxy resin

SPECIFICATIONS

Phantom height: 33 cm / 13 in
Phantom weight: 5.25 kg / 11.57 lb
Packing size: W46 x D31 x H32 cm / W18.1 x D12.2 x H12.6 in
Packing weight: 8 kg / 17.6 lb

