

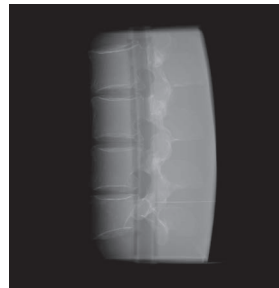
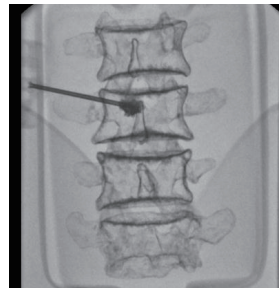
PH-51 | 41913-000



Lumbar Spine Fluoroscopy Training Phantom

Ideal training tool for hands-on workshop of vertebroplasty
The phantom has two types of interchangeable and replaceable inserts with radio-opaque lumbar spine

Product supervision:
 Dr. David Wilson MBBS, BSc, MFSEM, FRCP, FRCR
 Consultant Radiologist St Luke's Hospital Oxford
 Senior Clinical Lecturer University of Oxford



"I have tested the final product with various different manufacturing kits and would have no hesitation in recommending these phantoms to clinicians who wish to teach any of the technical vertebroplasty procedures."

DR DAVID J WILSON MBBS BSc MFSEM FRCP FRCR
 CONSULTANT MUSCULOSKELETAL INTERVENTIONAL RADIOLOGIST

FEATURES

- | Two types of replaceable training block vertebroplasty block and anesthesia block
- | Lumbar spine L2-L5 can be visualized under X-ray.
- | True-to-life sensation when penetrating tissue and bones

TRAINING SKILLS

- | Recognition of fluoroscopic anatomy and landmarks
- | Vertebroplasty
- | Fluoroscopy guided epidural anesthesia: needle placement in facet joint injection, root block and discogram.

ANATOMY

- | Lumbar spine (L2-L5)
- | Spinal canal
- | Epidural space (anesthesia block only)

DESCRIPTIONS

SET INCLUDES

1 lumbar torso	1 syringe
1 vertebroplasty block	1 irrigation bag
1 anesthesia block	1 storage case
1 skin cover	manual

MATERIALS

Soft tissue: urethane based resin (vertebroplasty block)
 silicone (anesthesia block)
 Synthetic bone: epoxy resin

SPECIFICATIONS

Phantom size: W33 x D21 x H30 cm W13 x D8.2 x H11.8 in	Packing size: W52 x D44 x H30 cm W20.4 x D17.3 x H11.8 in
--	---

REPLACEMENT PARTS

41913-000-01	anesthesia block
41913-000-02	vertebroplasty block
11348-150	skin cover

RELATED PRODUCTS



M43E/ 11348-500 Ultrasound Compatible Lumbar Puncture/Epidural Simulator
 | Ultrasonic anatomy and needle access training

