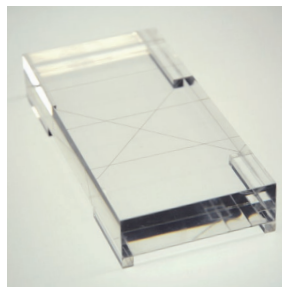


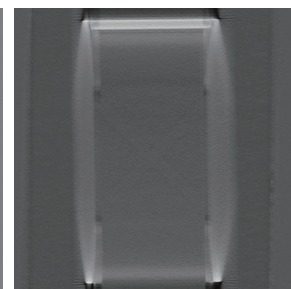
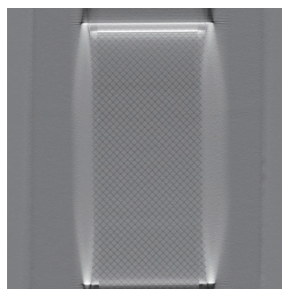
PH-56 | 41921-000

Tomosynthesis Phantom NS

Allowing evaluation of reconstruction slices and uniformity
in the measurement of slice thickness through showing the images numerically and graphically



SHOW MORE!



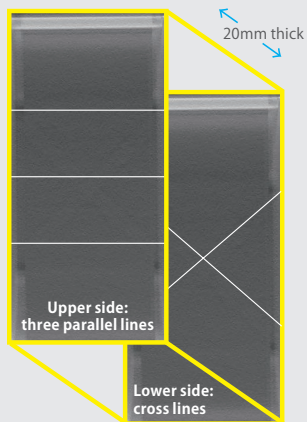
APPLICATIONS

| Tomosynthesis

EVALUATION PARAMETERS

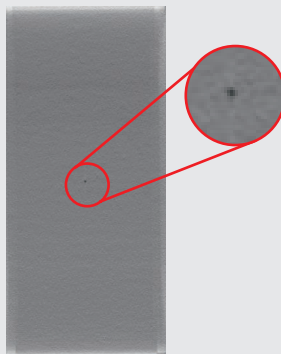
| Verification of reconstruction interval
| Slice thickness
| Uniformity

Reconstruction interval unit



For verification of the spatial interval in reconstruction
Stainless steel line: 0.1 mm/0.004 in dia.

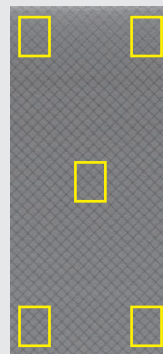
Slice thickness unit



For calculation of slice thickness using FWHM

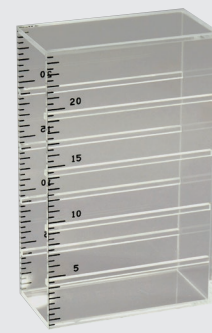
Hole: 1.0 mm/0.04 in dia.
Aluminum plate: 0.5mm/0.02 in thick
Acrylic plate 5mm/0.2 in thick.
*the aluminum plate is sandwiched between layers of Acrylic
70 x 150 mm/2.8 x 5.9 in

Uniformity unit



For evaluation of uniformity and tilting of the examination table
70 x 150 mm/2.8 x 5.9 in

Height setting rack



Test units can be set in the aluminum supporting box at 10, 15 or 20 mm (0.4, 0.6 or 0.79 in) height

DESCRIPTIONS

SET INCLUDES

- 1 reconstruction positioning unit
- 1 slice thickness unit
- 1 uniformity unit
- 1 height setting rack manual

MATERIALS

Acrylic resin, bakelite, aluminum, copper, stainless

SPECIFICATIONS

Phantom size:
W7 x D15 x H25 cm / W2.7 x D6 x H9.8 in

Packing size:
W46 x D31 x H17 cm / W18.1 x D12.2 x H6.7 in

Packing weight:
2 kg / 4.4 lb