

M43B/B-B



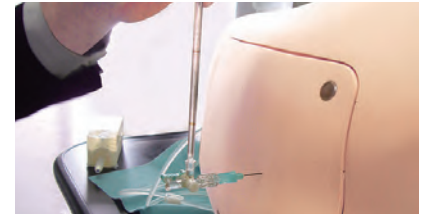
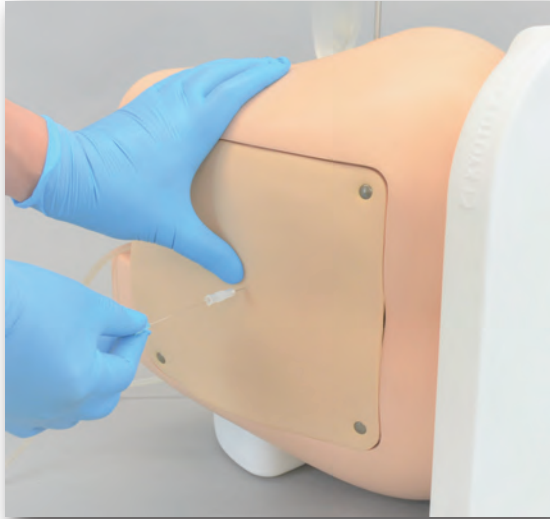
Lumbar Puncture Simulator IIA

World's best, staple training simulator for lumbar puncture and epidural anesthesia with the new user-friendly supporting stand

Five types of puncture blocks enhance training with different types of challenges

Product Supervision

Takahiro Amano, M.D.
Vice President
Senior Vice-Dean, Postgraduate School
Professor and Director, Center of Postgraduate
Medical Education
International University of Health and Welfare
Honorary Director, Sanno Medical Center



NEW

Two - way
supporting stand



FEATURES

- 1 | Anatomically accurate
- 2 | Realistic skin and tissue resistance during insertion
- 3 | Measure CSF fluid pressure, collect CSF fluid and practice epidural anesthesia procedures
- 4 | Simulates administration of epidural nerve block with realistic needle-tip sensation
- 5 | Simulates loss of resistance technique
- 6 | Model stand for either individual or group practice

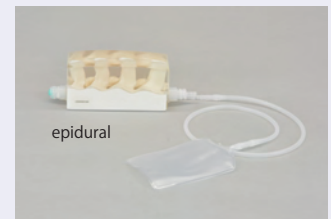
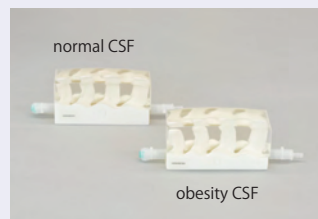
SKILLS

- | Palpation of landmarks
- | Lumbar puncture
- | CSF collection
- | CSF pressure measurement
- | Epidural anesthesia
- | Anatomical understanding

KEY FEATURES

5 types of puncture blocks for variable kinds

- | normal
- | obese
- | senior
- | senior obese
- | epidural



DESCRIPTIONS

SPECIFICATIONS

Size: W33 x D21 x H30 cm W13 x D8.3 x H11.8 inch

SET INCLUDES

M43B 11348-600

- | | |
|---|---|
| 1 | lumbar region model |
| 6 | lumbar puncture blocks
(2 normal CSF, 1 obesity CSF, 1 senior CSF, 1 senior obesity CSF, 1 epidural) |
| 1 | lumbar region skin cover |
| 1 | supporting stand (two ways) |
| 1 | support base (team teaching) |
| 1 | lumbar spine model |
| 1 | irrigation bag |
| 1 | syringe |
| 1 | instruction manual |
| 1 | storage case |

M43B-B 11348-999

- | | |
|---|---|
| 1 | lumbar region model |
| 4 | lumbar puncture blocks
(2 normal CSF, 1 obesity CSF, 1 epidural) |
| 1 | lumbar region skin cover |
| 1 | supporting stand (two ways) |
| 1 | irrigation bag |
| 1 | syringe |
| 1 | instruction manual |
| 1 | storage case |

MATERIALS

Soft resin
Latex free

RECOMMENDED DEVICES

REPLACEMENT PARTS

- | | |
|-----------|---------------------------------|
| 11348-090 | 1 LP block (normal CSF) |
| 11348-110 | 1 LP block (obesity CSF) |
| 11348-120 | 1 LP block (senior CSF) |
| 11348-130 | 1 LP block (senior obesity CSF) |
| 11348-140 | 1 epidural block |
| 11348-150 | 1 lumbar region skin cover |
| 11348-160 | 1 supporting stand |

