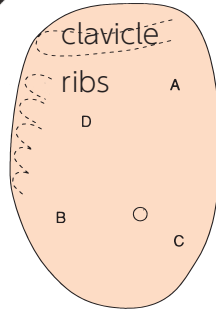
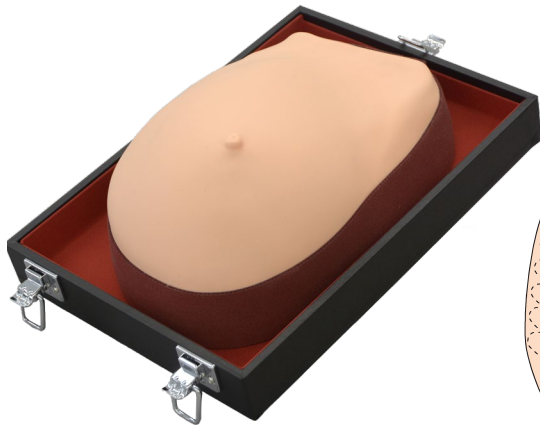


M44



Visual-Tactile Breast Examination Simulator



A compact and realistic breast examination trainer

An excellent training and demonstration tool in breast lumps palpation both in educational and clinical setting

Utility model (Japan): No.1790498

Product Supervision

Tsuneaki Senoh, Prof.,
Kurashiki Medical Center

FEATURES

- 1 | Four breast lumps (tumor with dimple, tumor with skin depression, fibroadenoma and mastopathy)
- 2 | Bony landmarks for palpation: clavicle and ribs
- 3 | Soft and life-like texture

SKILLS

- | Tactile breast examination
- | Breast self-examination

PATHOLOGIES

(A) Skin Dimpling (Tumor):

Hard. Uneven surface. Partially unclear boundary

(B) Pitting (Tumor):

Hard. Uneven surface. Partially unclear boundary.

(C) Fibroadenoma:

Spherical. Smooth surface. Movable. Clear boundary.

(D) Mastopathy:

Elastic. Smooth surface. Unclear boundary.

DESCRIPTIONS

MATERIALS

Latex free
Soft resin

REPLACEMENT PARTS

-

SPECIFICATIONS

Size: W20 x D28 x H13 cm / W7.9 x D11 x H5.1 inch

SET INCLUDES

- 1 breast model (attached to the case)
- 1 talcum powder
- 1 storage case
- 1 instruction manual

M71



Breast Self Examination Model - body-worn type -



Breast examination trainer for self examination

Practice to detect and differentiate 6 different lumps through visual-tactile examination.

Utility model (Japan): No.1790498

Product Supervision

Tsuneaki Senoh, Prof.,
Kurashiki Medical Center

FEATURES

- 1 | Six signs of breast tumors
- 2 | An ideal tool for breast self-examination education.
- 3 | Realistic size, appearance and texture.

SKILLS

- | Tactile breast examination
- | Breast self-examination

DESCRIPTIONS

MATERIALS

Soft resin
Latex free

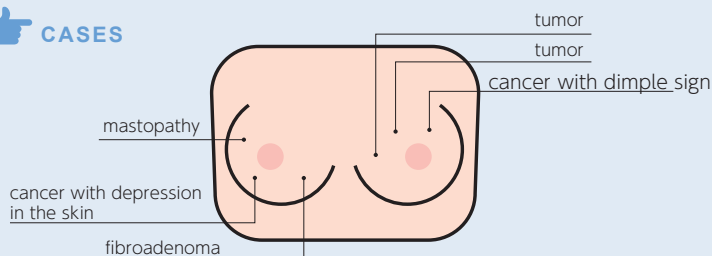
REPLACEMENT PARTS

-

RECOMMENDED DEVICES

-

CASES



SPECIFICATIONS

Size: W28 x D21 x H8 cm / W11 x D8.2 x H3.1 inch

SET INCLUDES

- 1 breast model with the strap belts
- 1 storage case