

M56 Pediatric Patient Care Simulator

Instruction manual

KYOTOKAGAKU Co.,Ltd. KYOTOKAGAKU Co.,Ltd. KYOTOKAGAKU Co.,Ltd.

 **KYOTO KAGAKU co.,LTD**

Ink from this manual will stain the manikin - do not leave in contact with the skin.

Table of Contents

Features	P. 1
Before use	P. 2
Specifications	P. 2
Training items	P. 3
Wig	P. 4
Mouth-nose unit (detaching)	P. 5
Tracheostomy opening unit (detaching)	P. 6
Tracheostomy opening unit (attaching)	P. 7
Mouth-nose unit (attaching)	P. 8
PEG opening unit	P. 9
Stomach-esophagus connection	P. 10
Stomach-esophagus disconnection	P. 11
Stomach: water filling and drainage	P. 12
Genitalia unit	P. 13
Irrigation set	P. 14
Exchange of valve for genitalia unit	P. 15 – 17
Chest and addomen covers	P. 18 – 19
Handling and Strage Instructions	P. 20

Features

The Pediatric Patient Care Simulator is designed to facilitate training for various skills associated with many child care situations.

- Positioning and patient handling
- PEG care and feeding tube management
- Male and female catheterization
- Airway suction: oral, nasal or through tracheostomy opening

Before use

M56 Pediatric Patient Care Simulator is designed for medical and nursing pediatric education.

Do not use for any other purpose.

Read this manual carefully before use and follow all instructions.

Misuse or breakage caused by any means other than those illustrated in this instruction manual could nullify any warranty by the manufacturer.

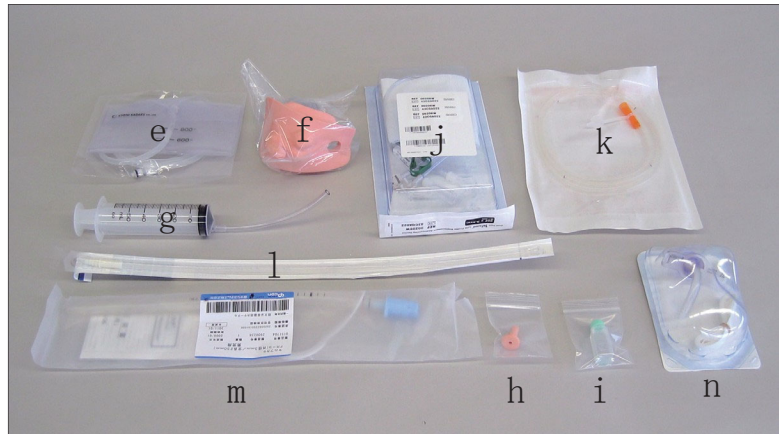
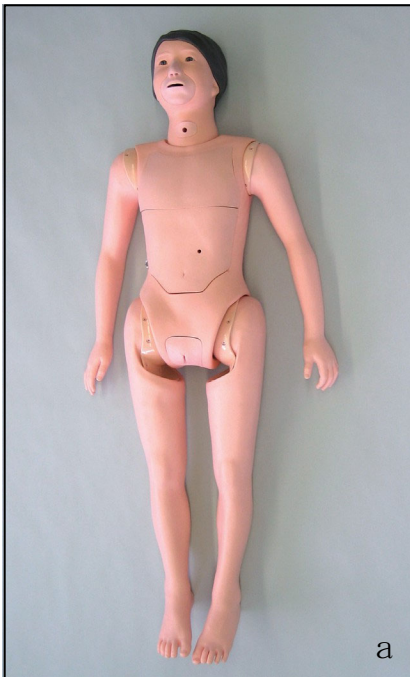
Handle the Pediatric Patient Care Simulator with care at all times. Do not use excessive force with the manikin.

Specifications

Height: approx. 125 cm or 4.1 ft. tall (average 6-8-year-old child)

Weight: Approx. 13kg or 26.7 lbs.

Check if all components listed below are included



- a. manikin 1
- b. head-neck anatomy plate 1
- c. training suits (design is subject to change.) 1
- d. Strap-on venipuncture trainer II 1
- e. irrigation bag 1
- f. male genitalia unit 1
- g. syringe 1
- h. PEG opening unit (small hole) 1

- i. silicone oil 1

Lubricant for the following sample catheters.
And you can also be used with your own catheters etc.

- Sample catheters (included in B set only)**
- j. PEG tube 1
 - k. transnasal catheter 1
 - l. suction catheter 1
 - m. urinary catheter 1
 - n. tracheal cannula 1

Training items

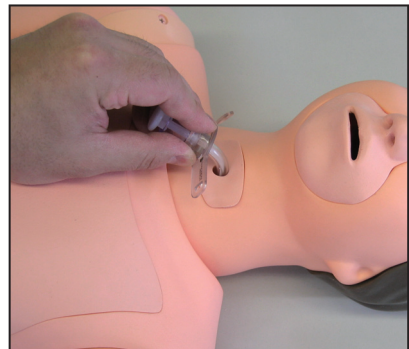
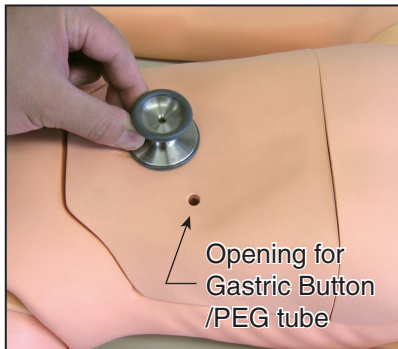
Urinal catheterization

Male
Female



PEG care

Gastric button
PEG tube
Catheter insertion
Air auscultation



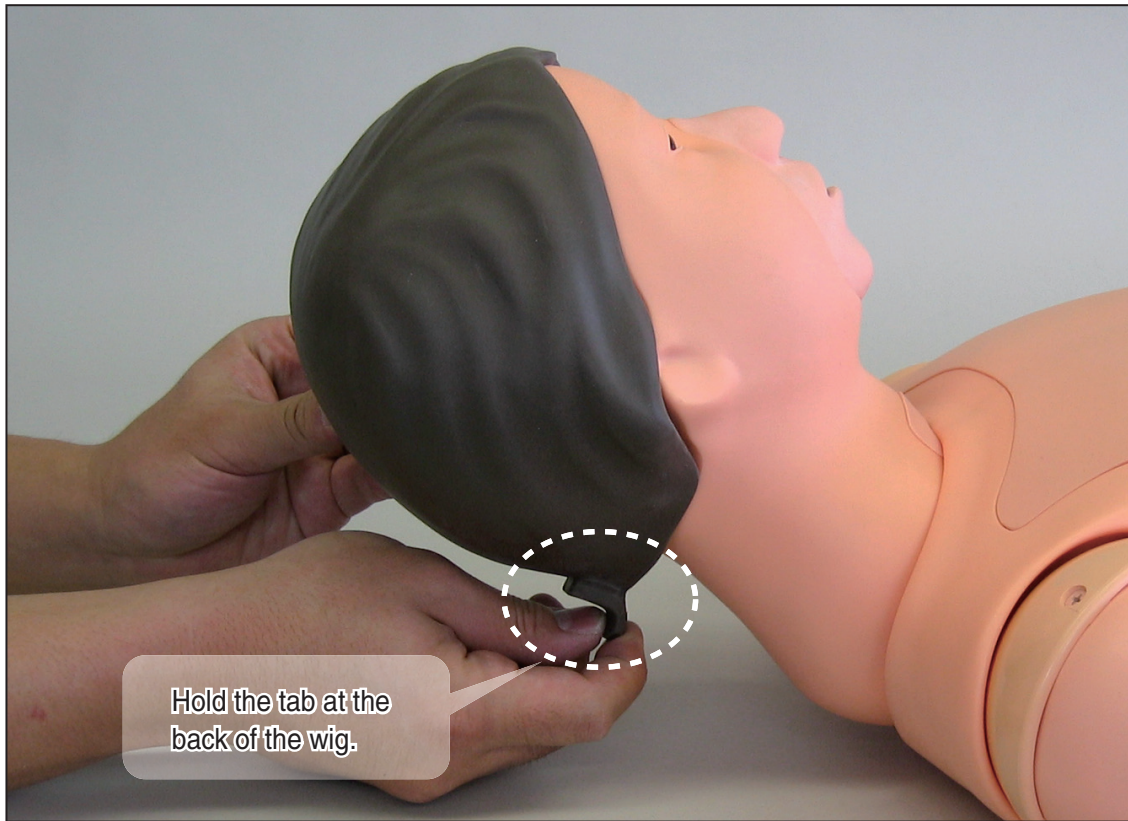
Airway suction

Oral
Nasal
Tracheal

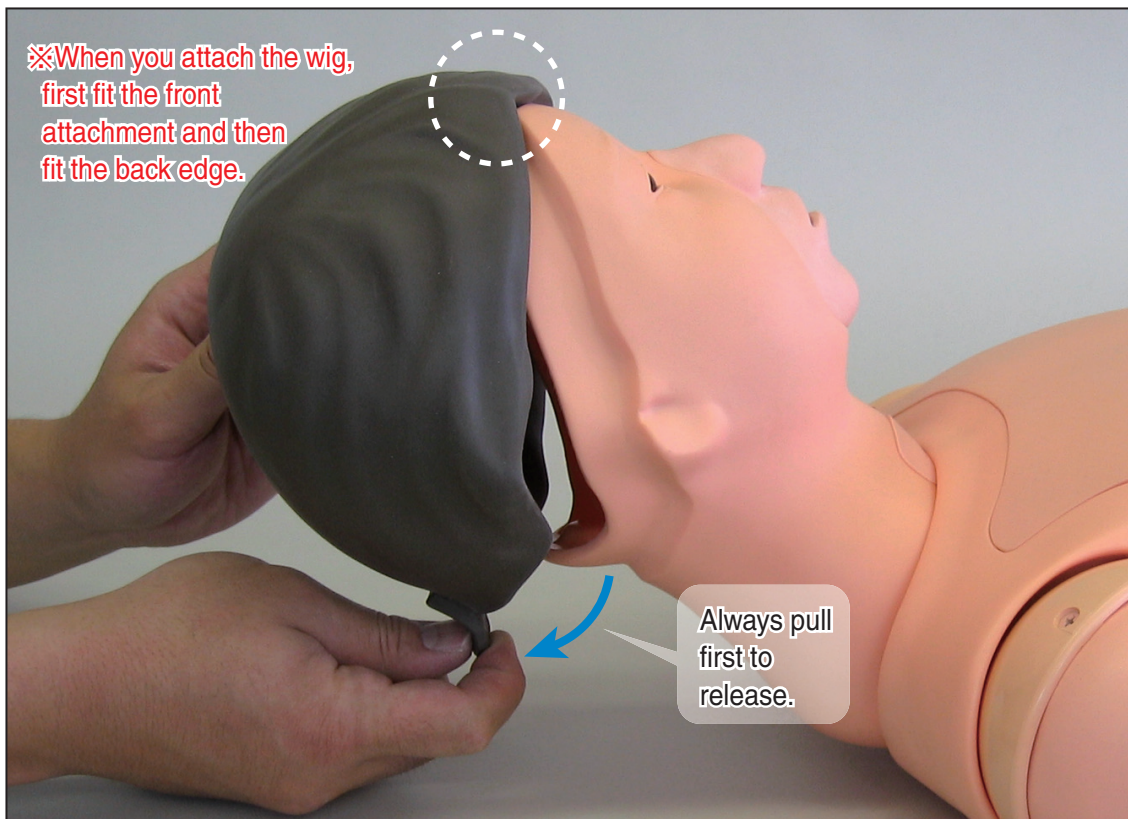


カツラの着脱

1



2



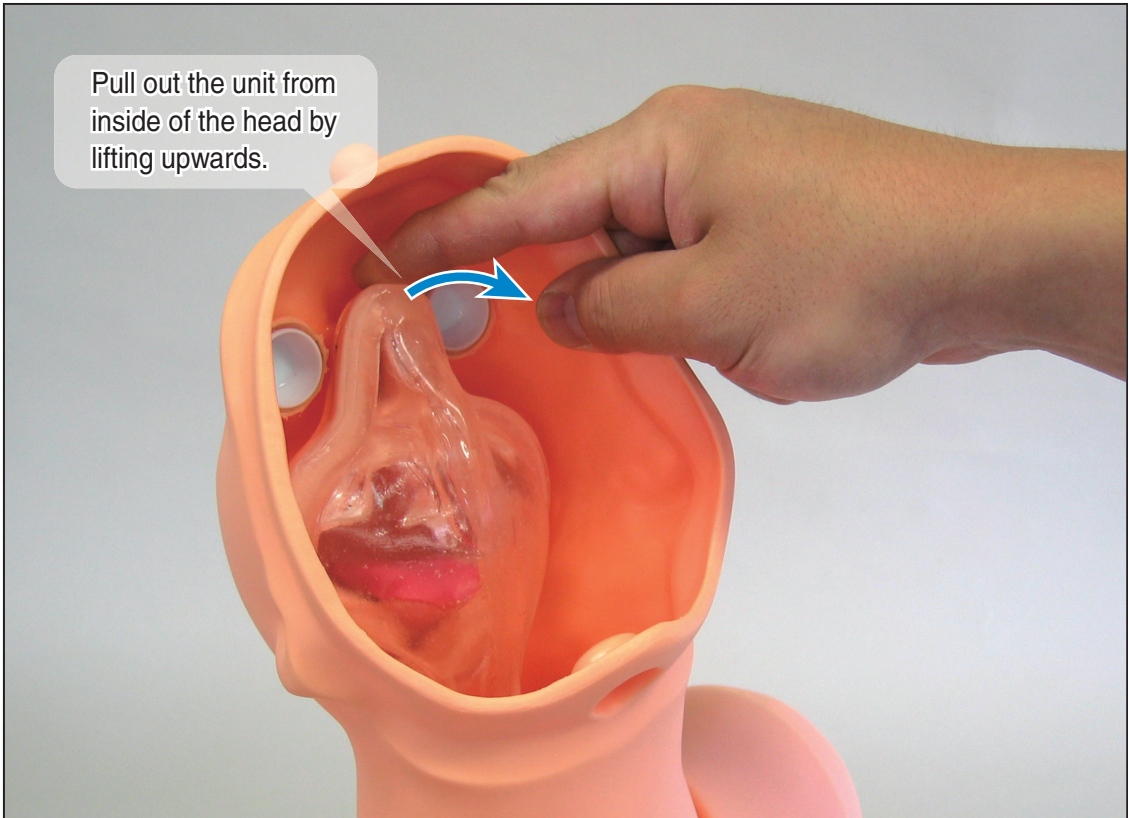
Mouth-nose unit (detaching)



Before detaching the mouth-nose unit, disconnect the esophagus tube from the stomach. See instructions on page 11. →

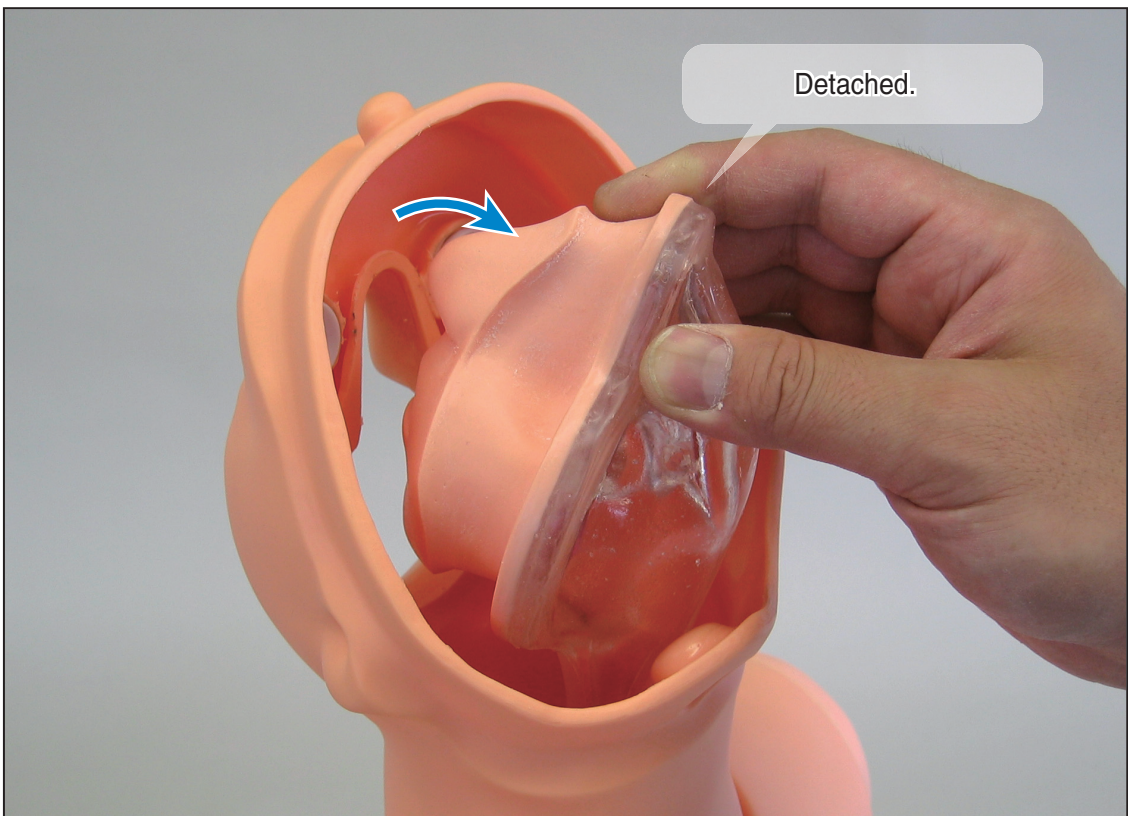
1

Pull out the unit from inside of the head by lifting upwards.



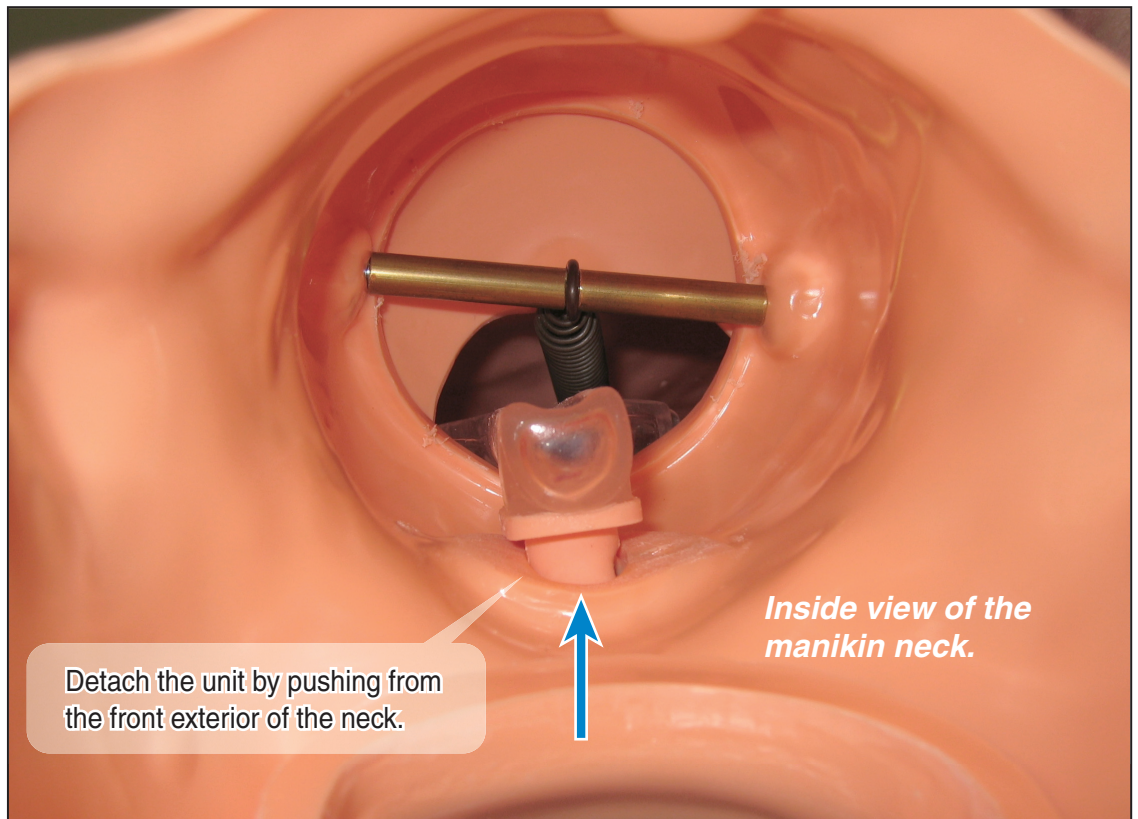
2

Detached.

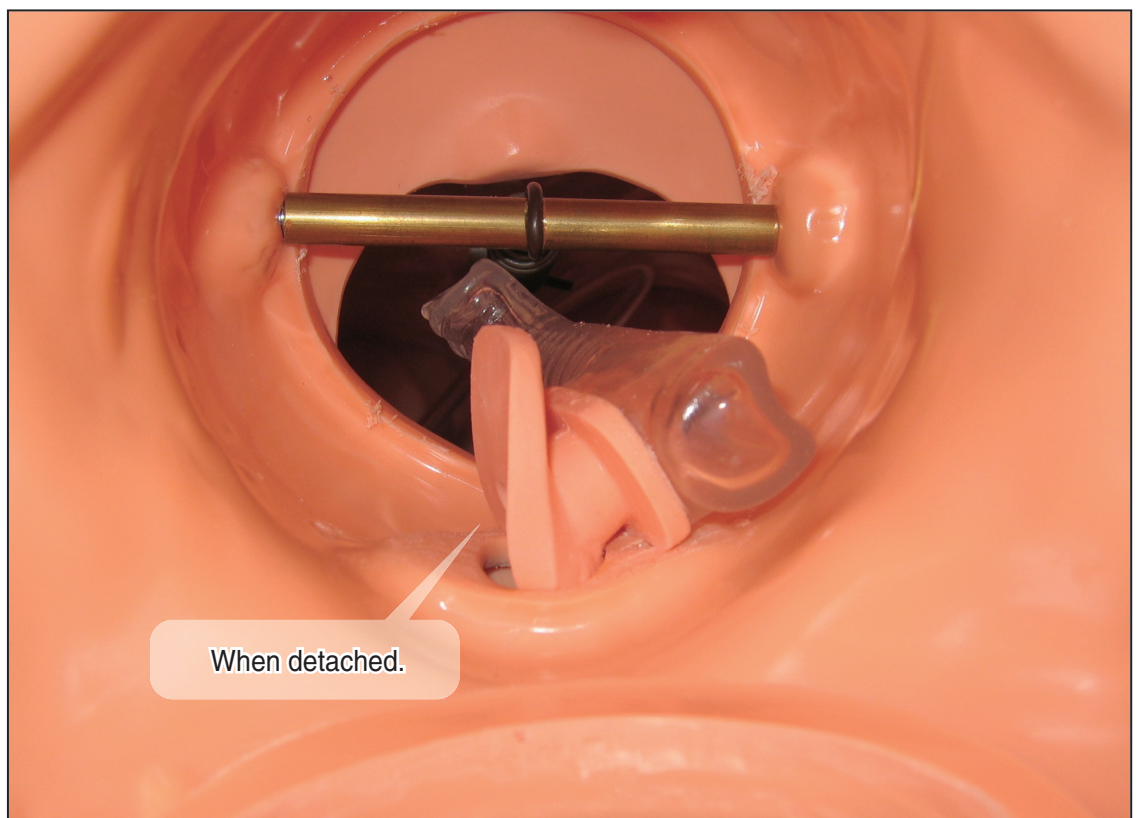


Tracheostomy opening unit (detaching)

1

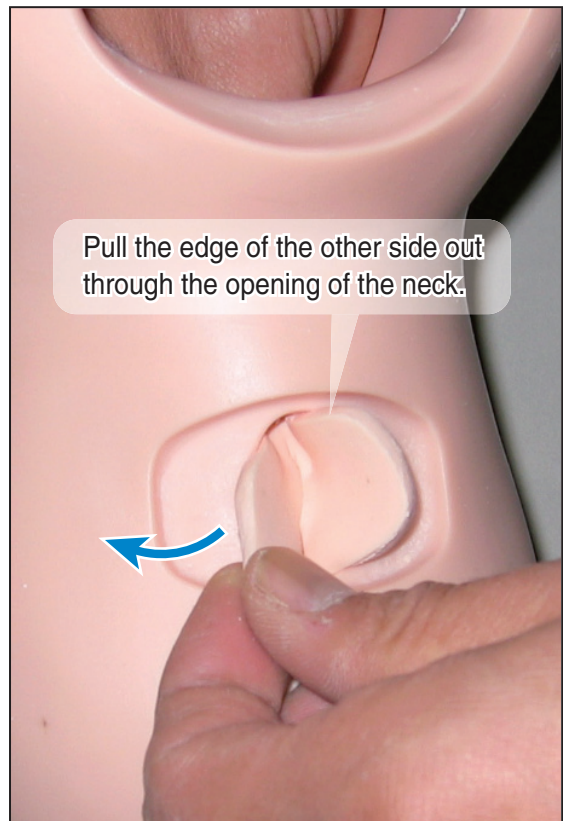
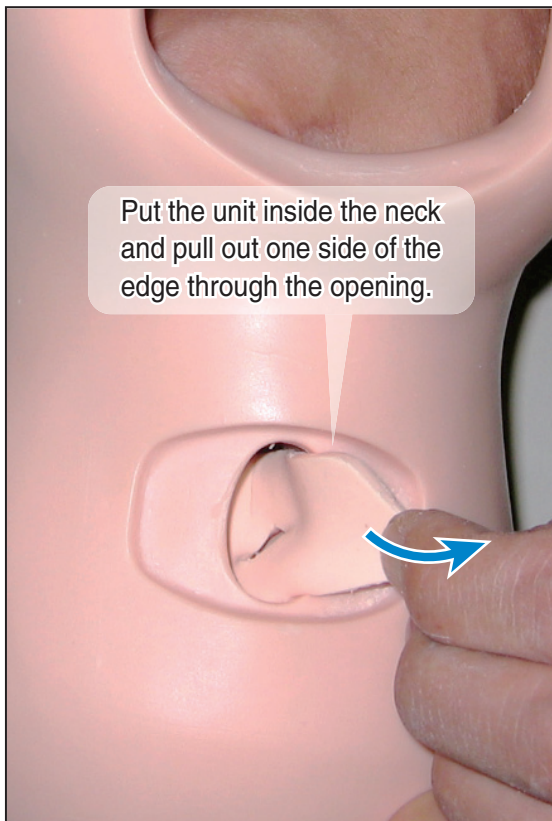


2



Tracheostomy opening unit (attaching)

1

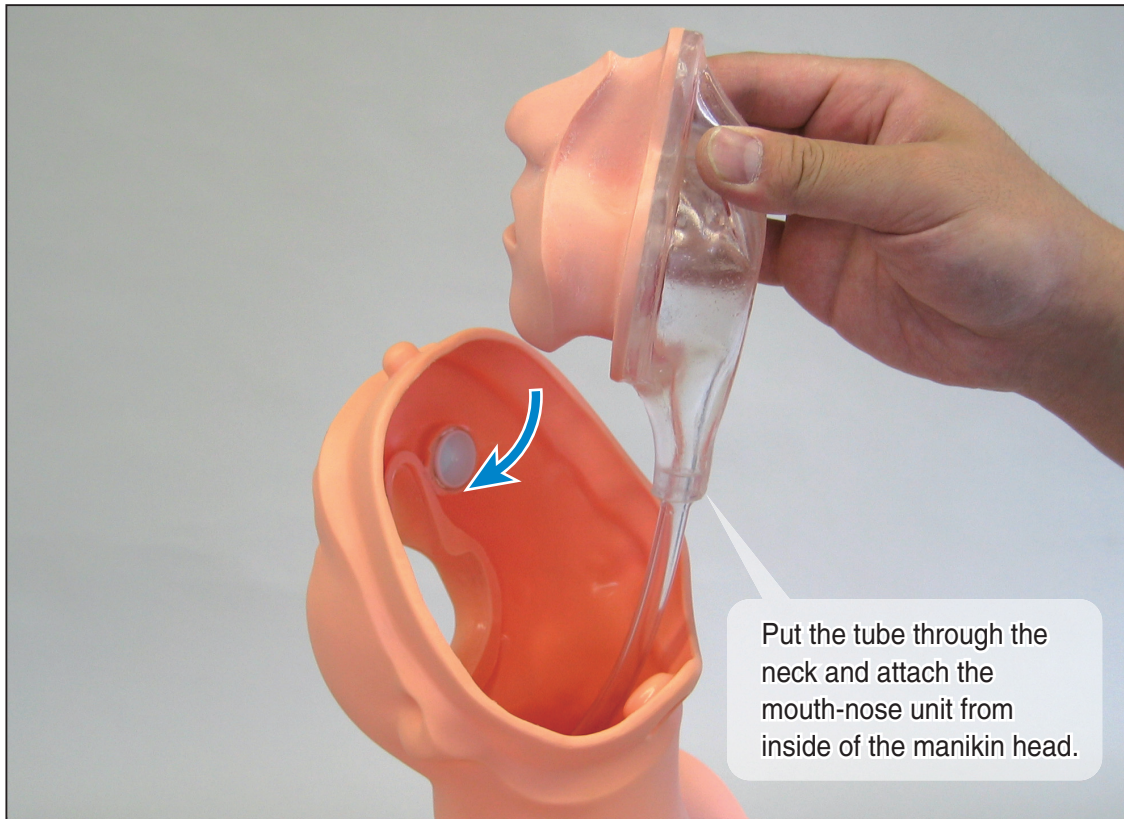


2

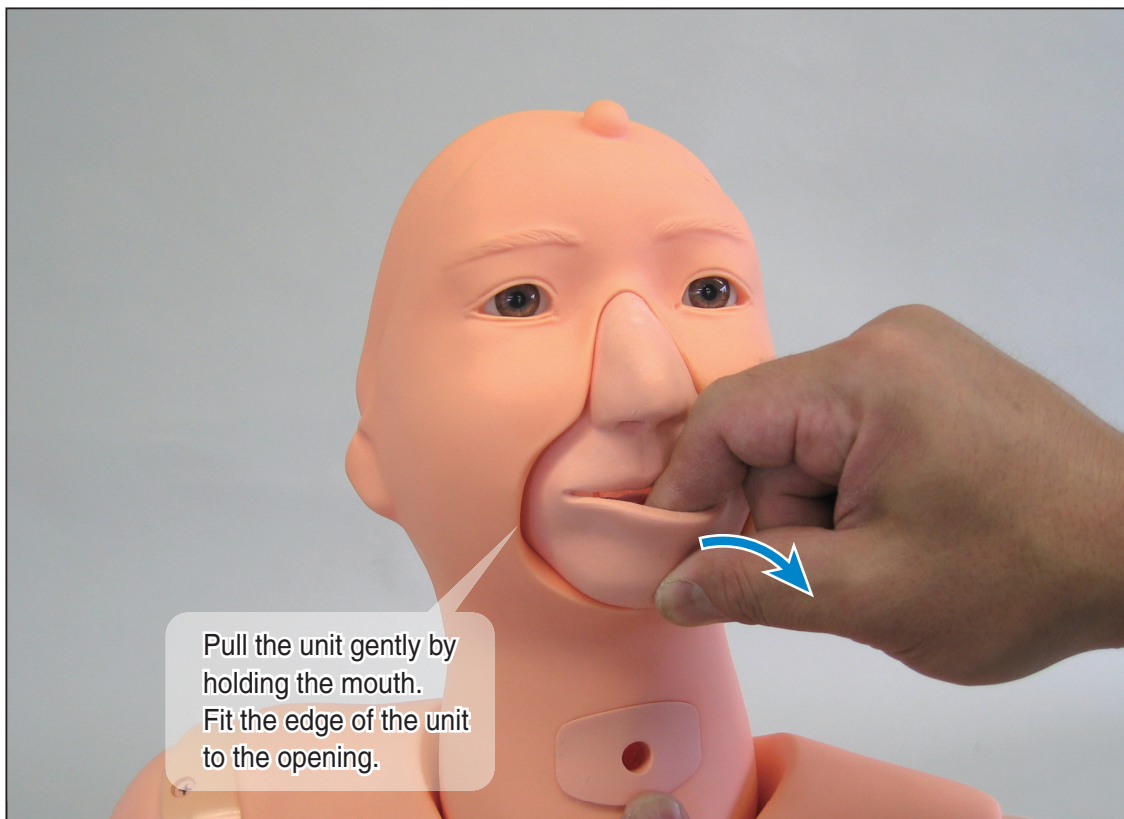


Mouth-nose unit (attaching)

1



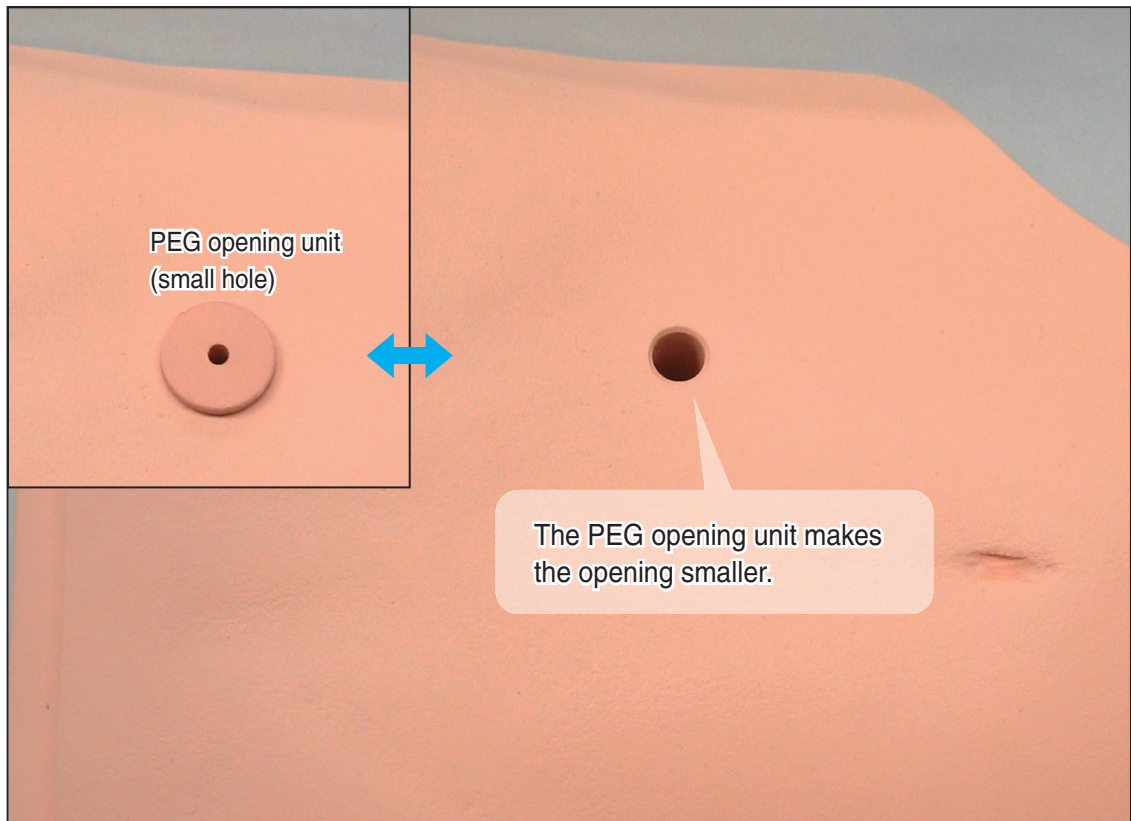
2



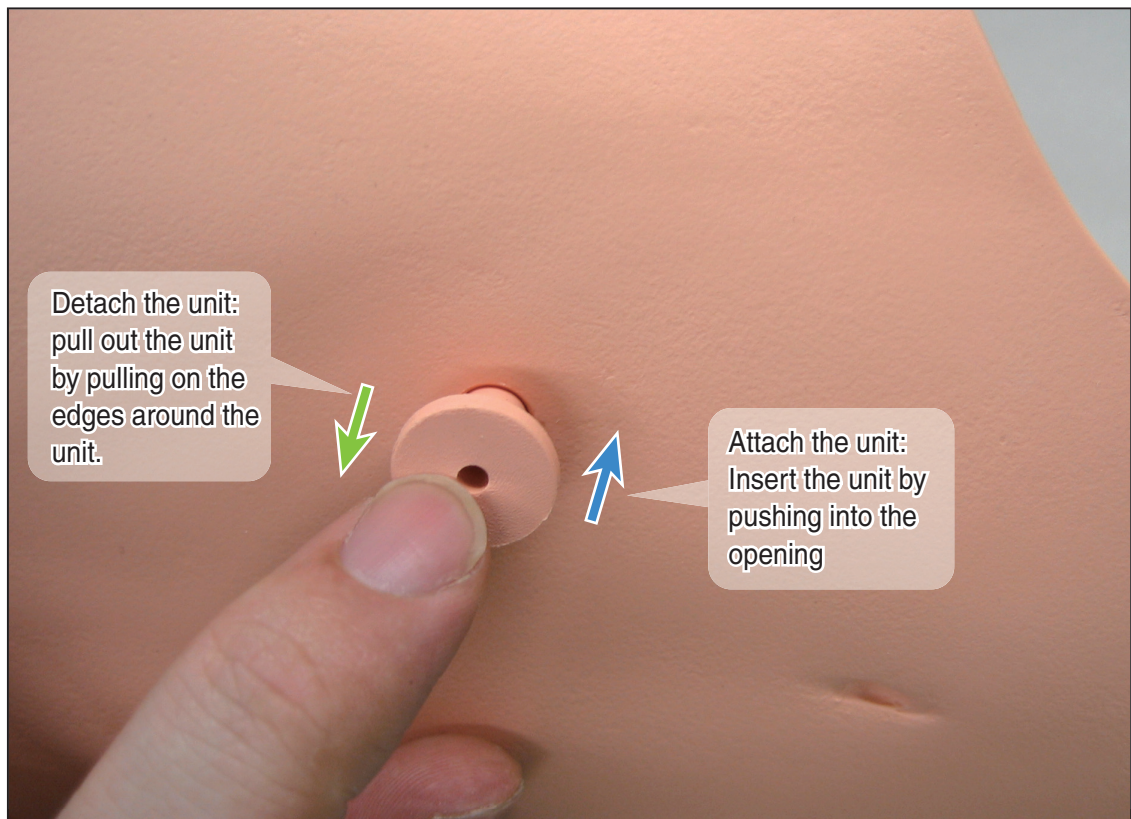
Warning note: After attach the mouth-nose unit to the manikin face, be sure to connect the esophagus tube to the stomach. See instruction on page 10. →

PEG opening unit

1

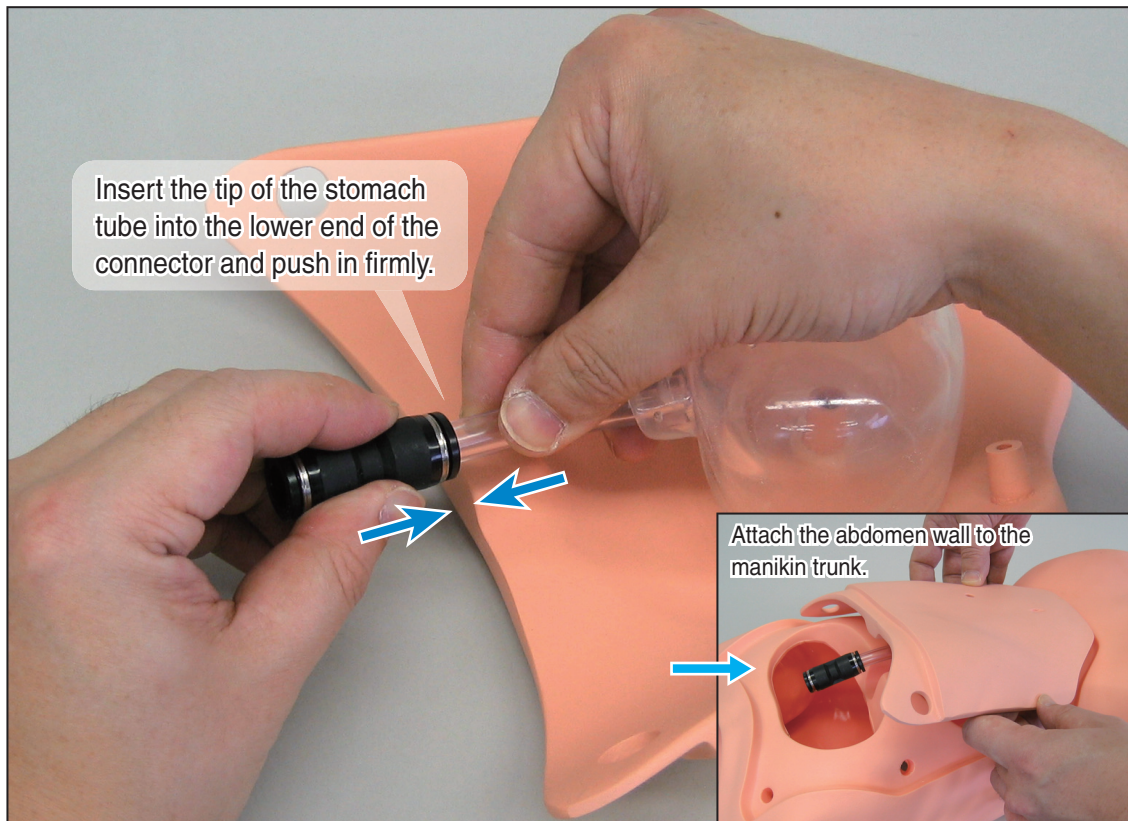


2



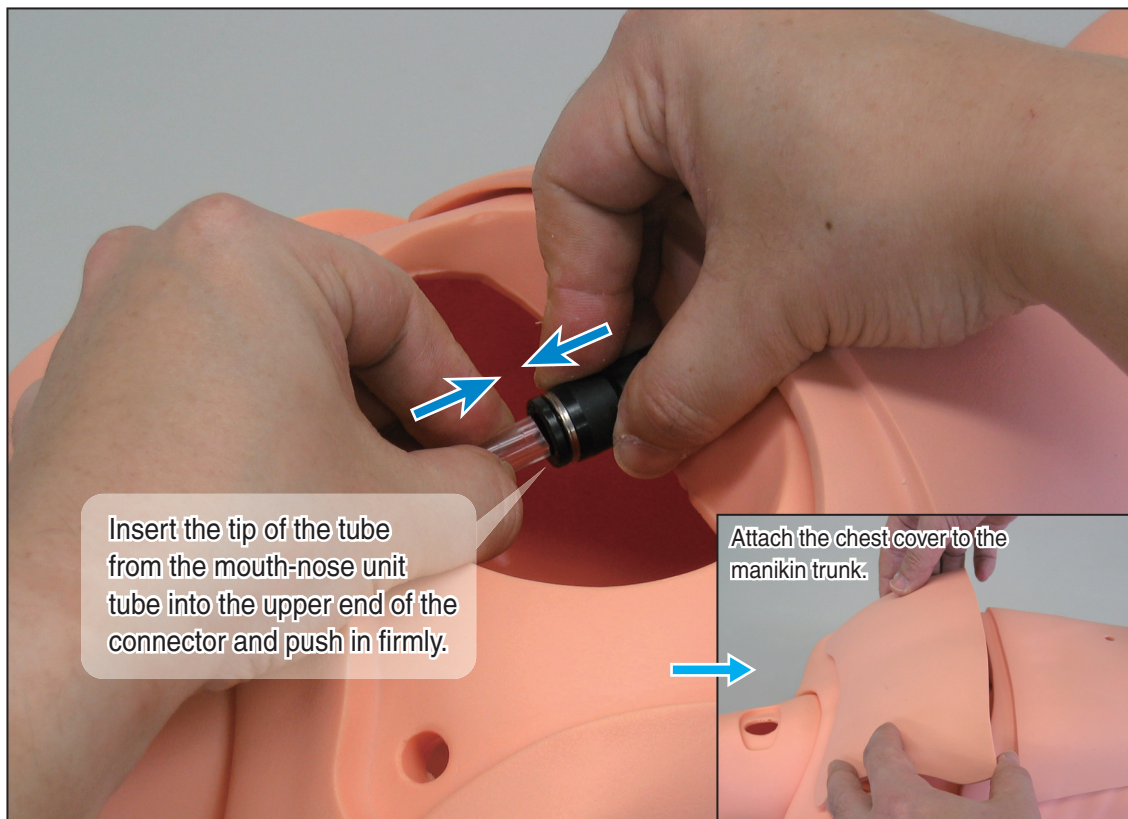
Connecting the stomach-esophagus

1



Warning note: Attach the abdominal wall to the manikin torso by aligning the plugs to their corresponding holes.

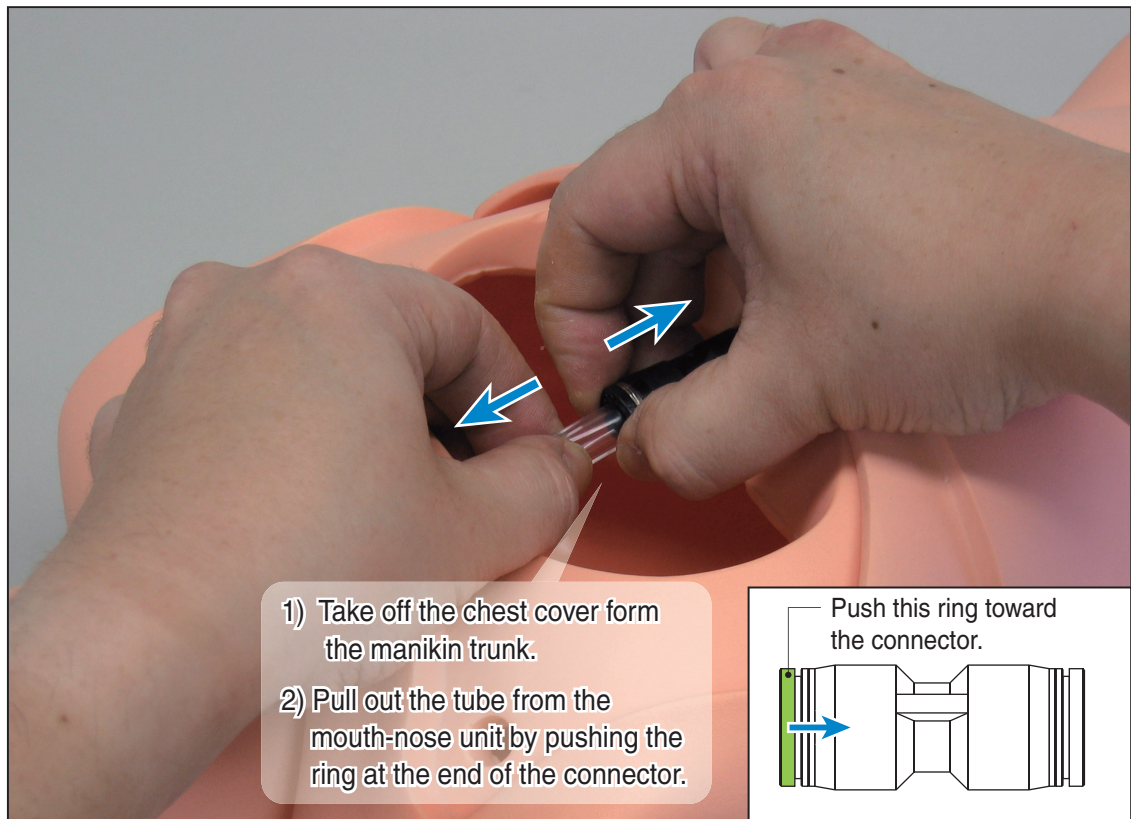
2



Warning note: Attach the chest cover over the abdominal wall by aligning the plugs to their corresponding holes. The abdominal wall must be attached first.

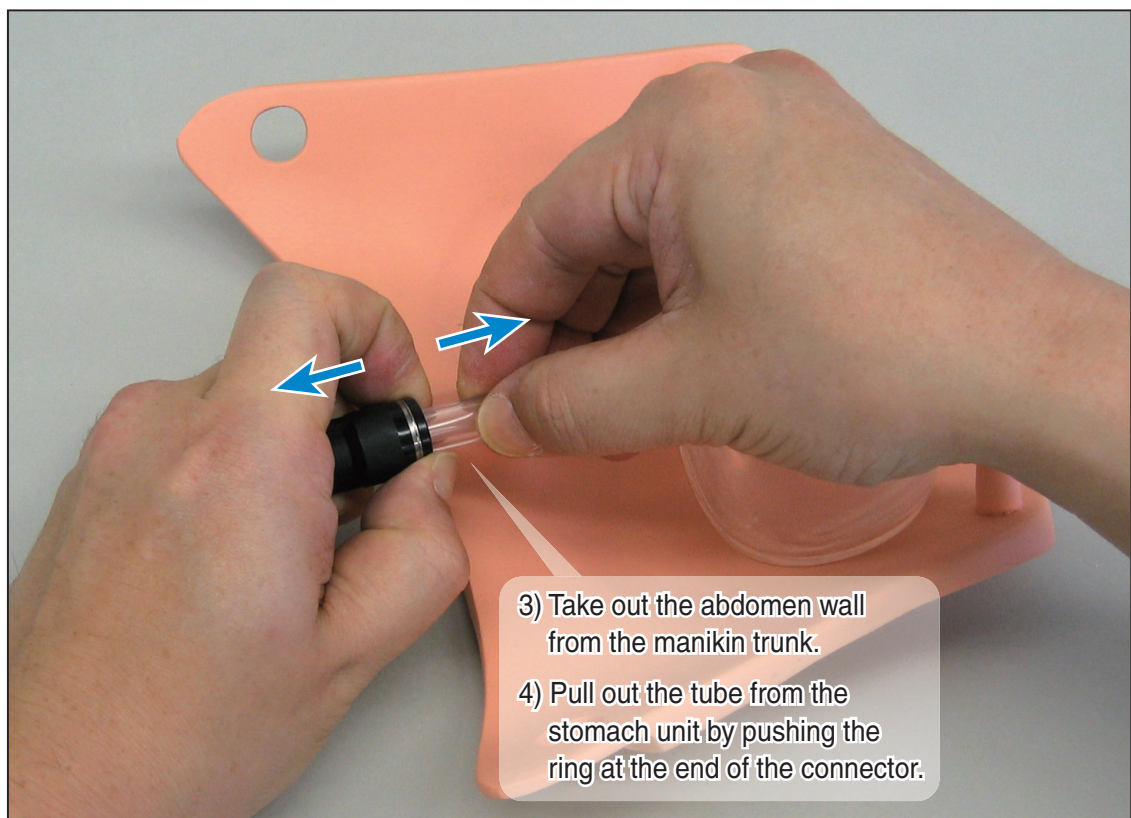
Disconnecting the stomach-esophagus

1



Warning note: See page 18 for instruction on detaching the chest cover.

2



Warning note: See page 19 for instruction on detaching the abdomen wall.

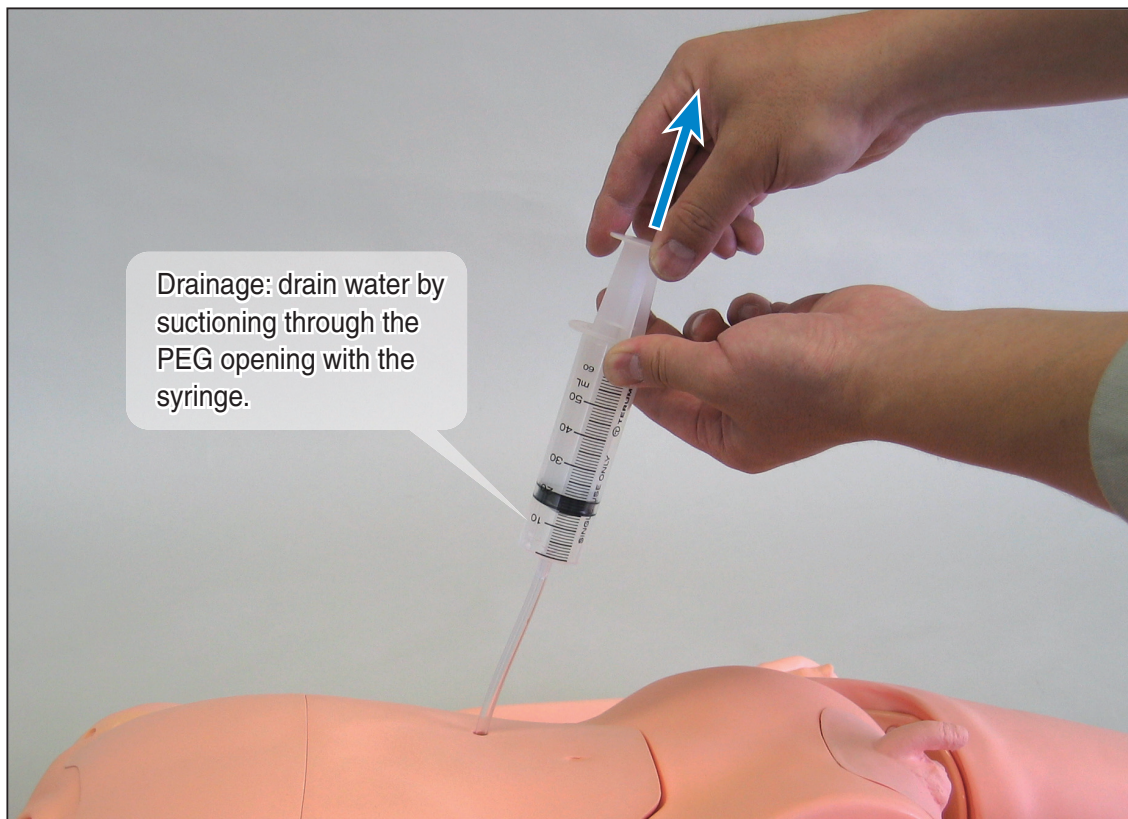
Stomach: water filling and drainage

1



 Do not fill with water more than 100ml.

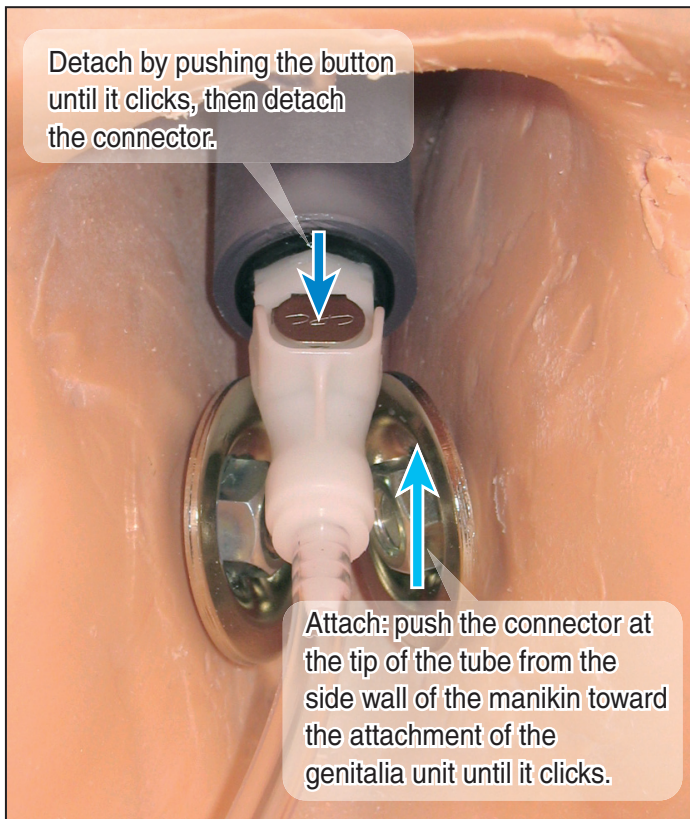
2



Genitalia unit

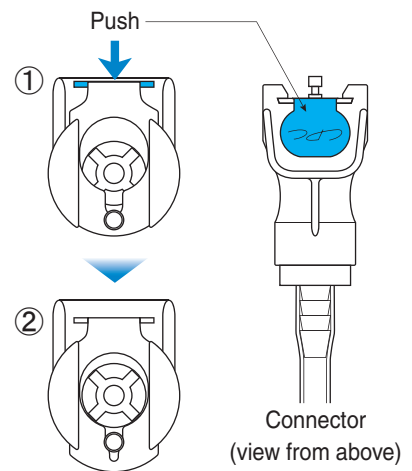
1

Detach by pushing the button until it clicks, then detach the connector.



Attach: push the connector at the tip of the tube from the side wall of the manikin toward the attachment of the genitalia unit until it clicks.

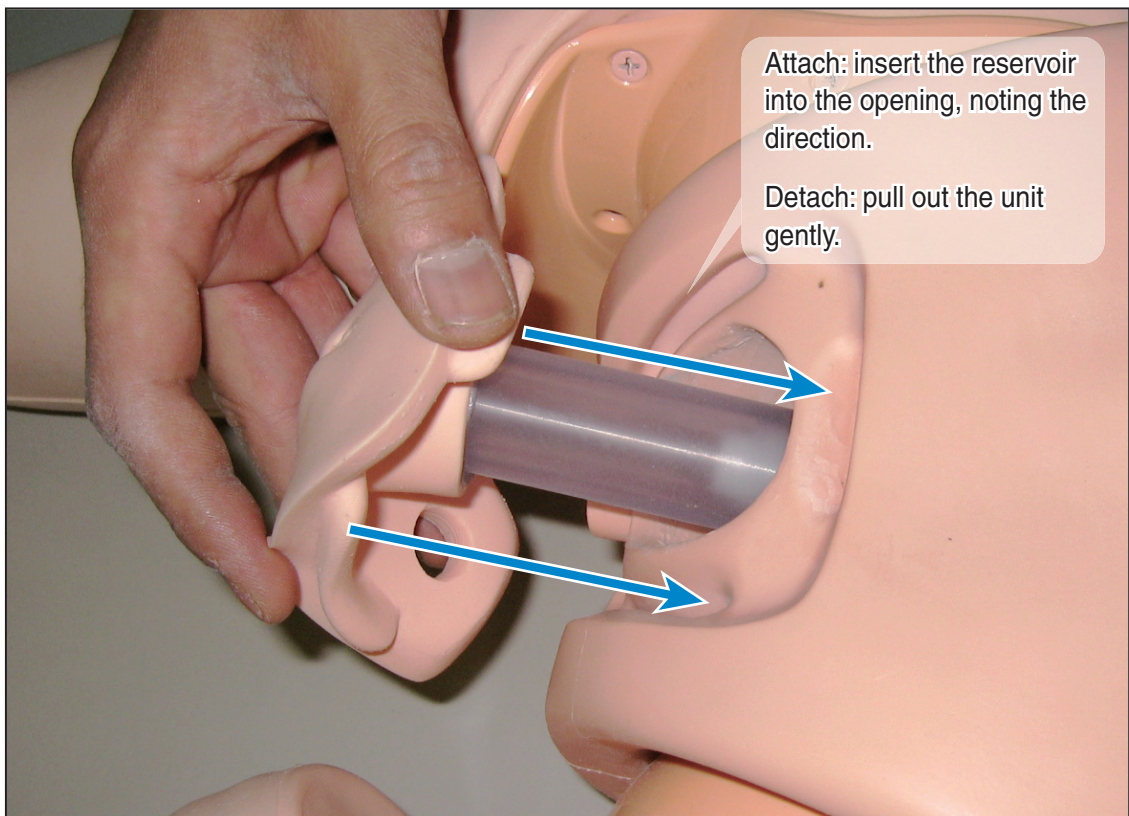
Before attaching the tube, release the stopper by pushing the metal button on the connector.



2

Attach: insert the reservoir into the opening, noting the direction.

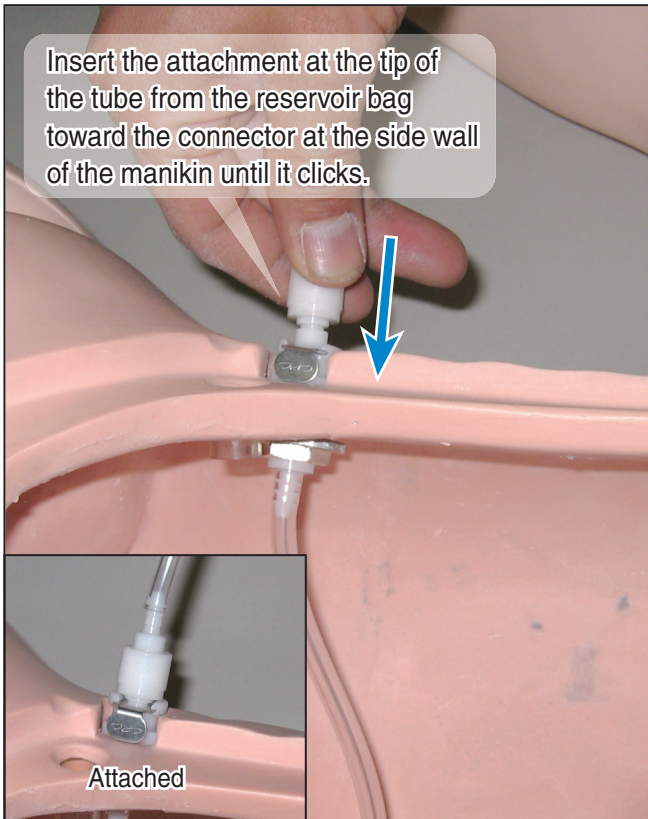
Detach: pull out the unit gently.



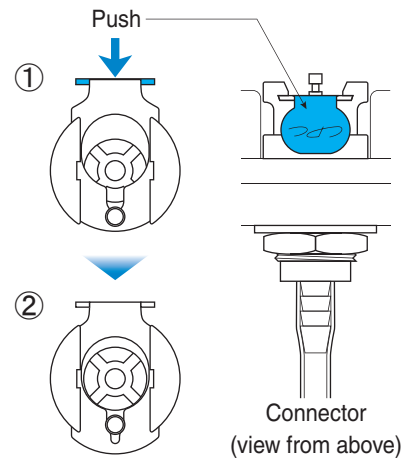
Irrigation set

1

Insert the attachment at the tip of the tube from the reservoir bag toward the connector at the side wall of the manikin until it clicks.

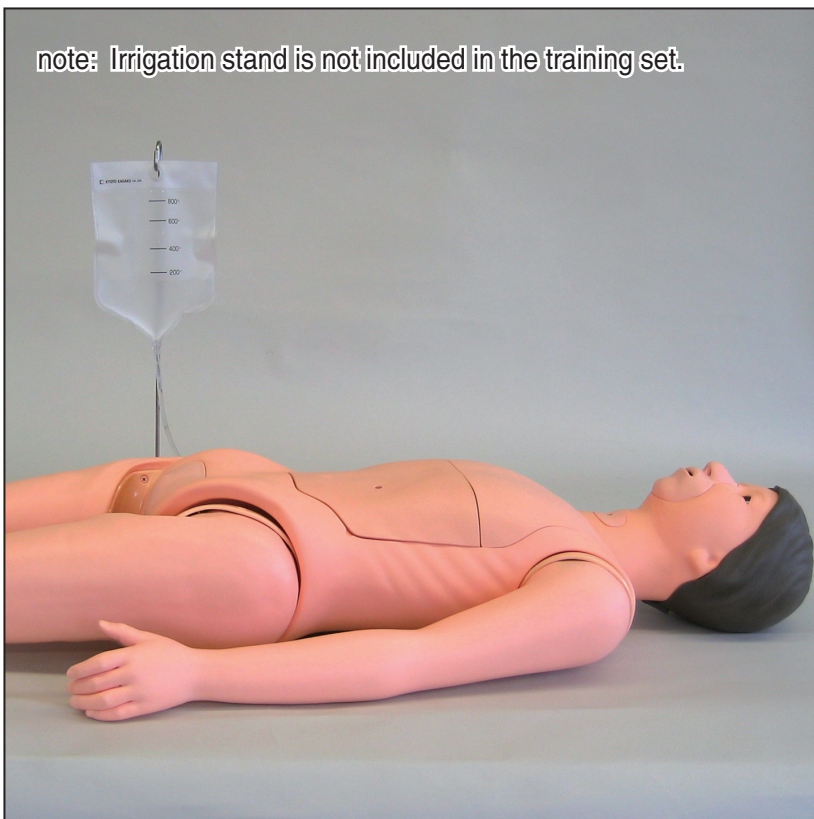


Before attaching the tube, release the stopper by pushing the metal button on the connector.

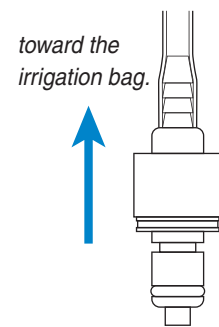


2

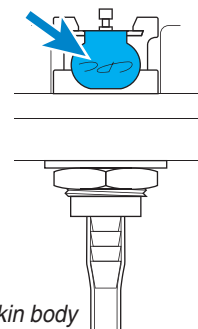
note: Irrigation stand is not included in the training set.



Detach the connector



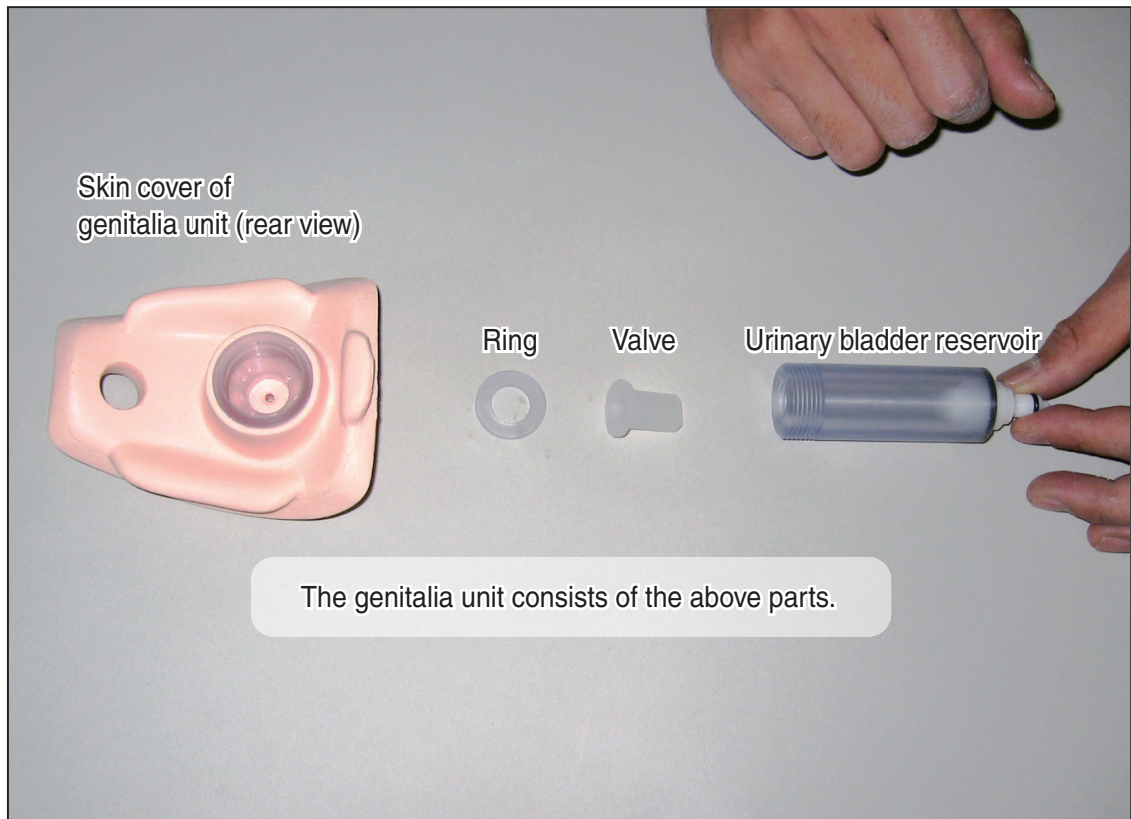
Push until clicks



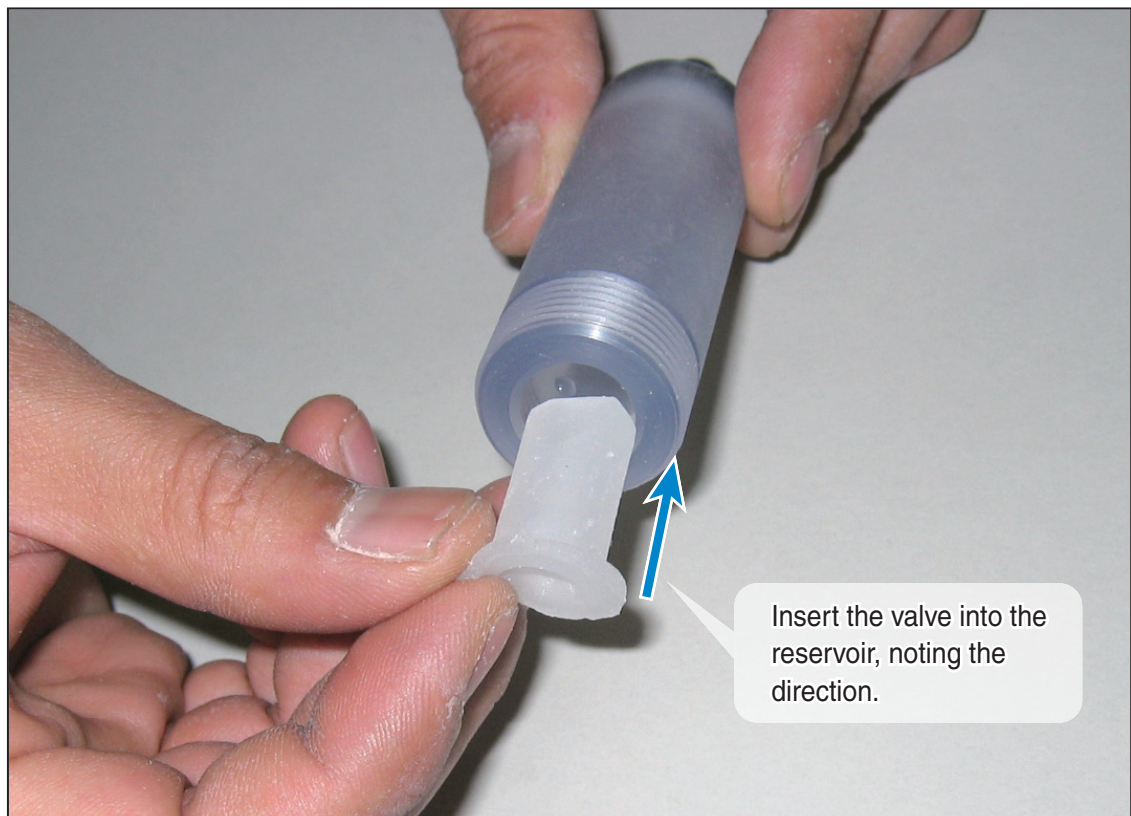
Warning note: Please allow time for water to reach the genitalia unit upon first-time use; prepare ahead of first training session.

Exchange of valve for genitalia unit

1



2

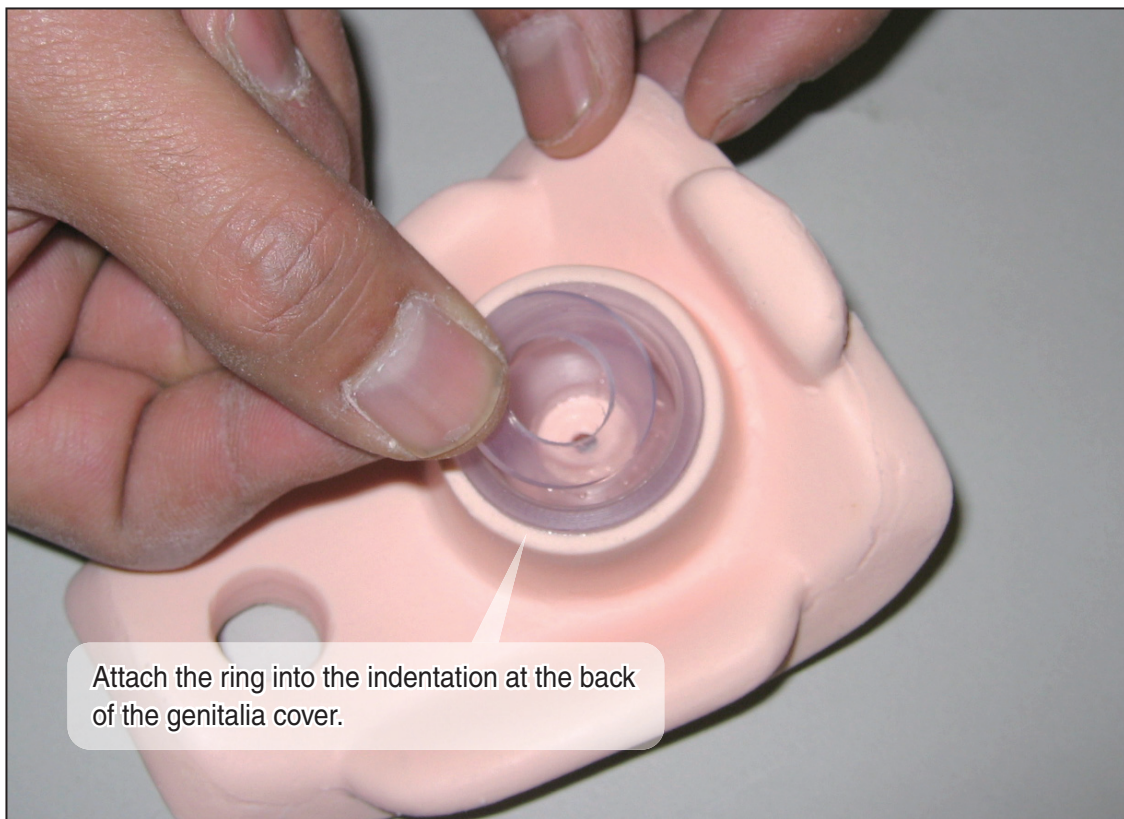


Exchange of valve for genitalia unit (continued)

3

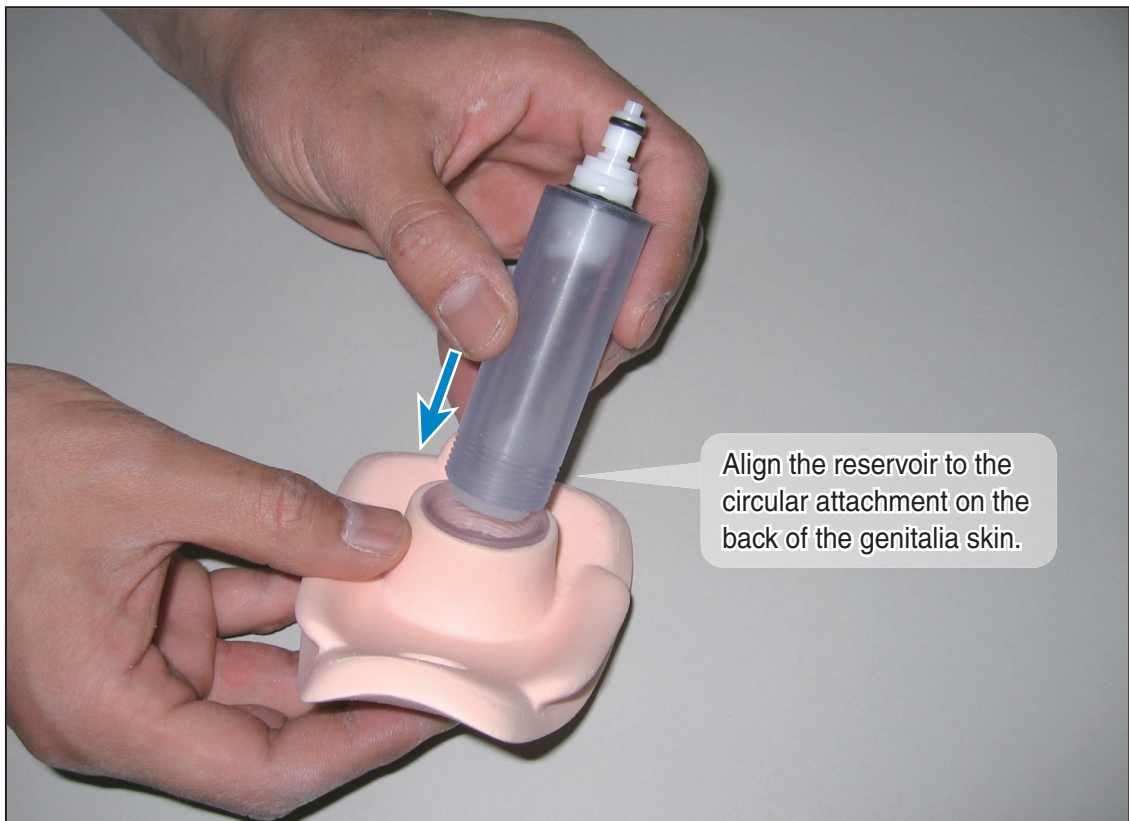


4




Exchange of valve for genitalia unit

5



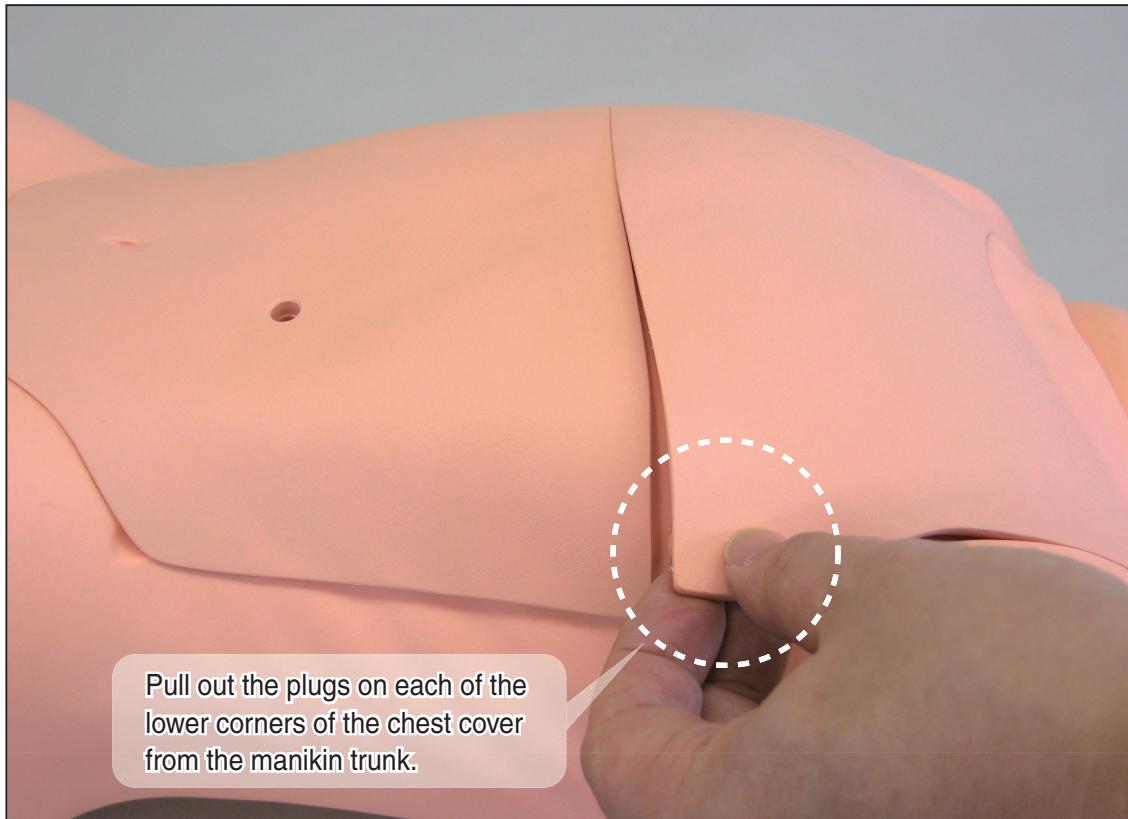
6



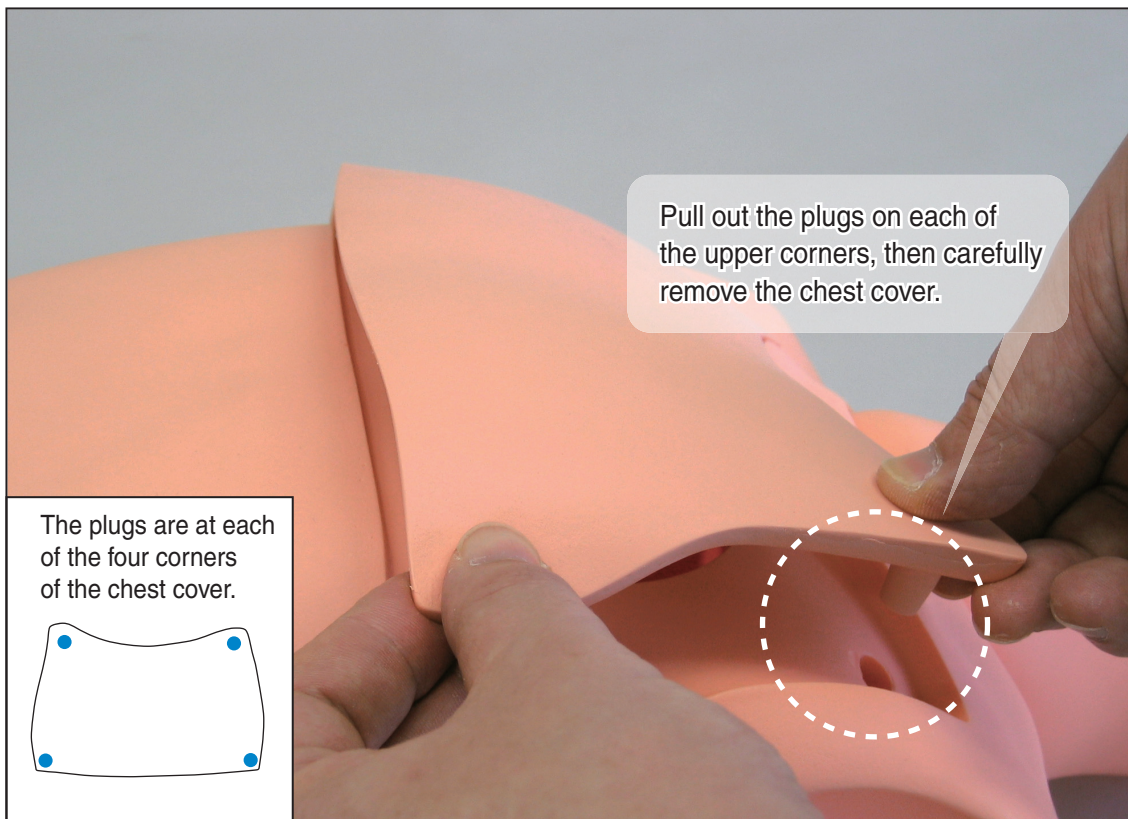
 **Warning note:** "Do not use excessive force to attach the reservoir. If the reservoir does not align with the threads, unscrew and try again. For detaching, take procedure above in reverse order."

Chest and abdomen covers

1

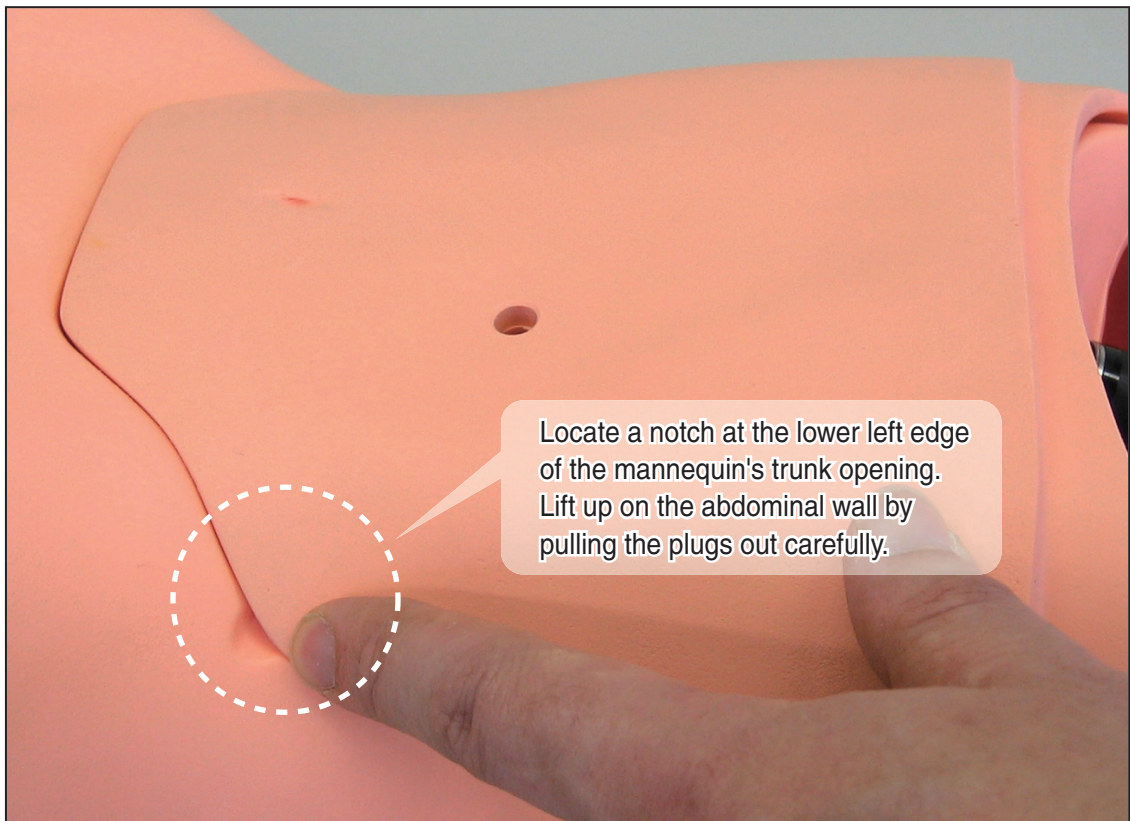


2

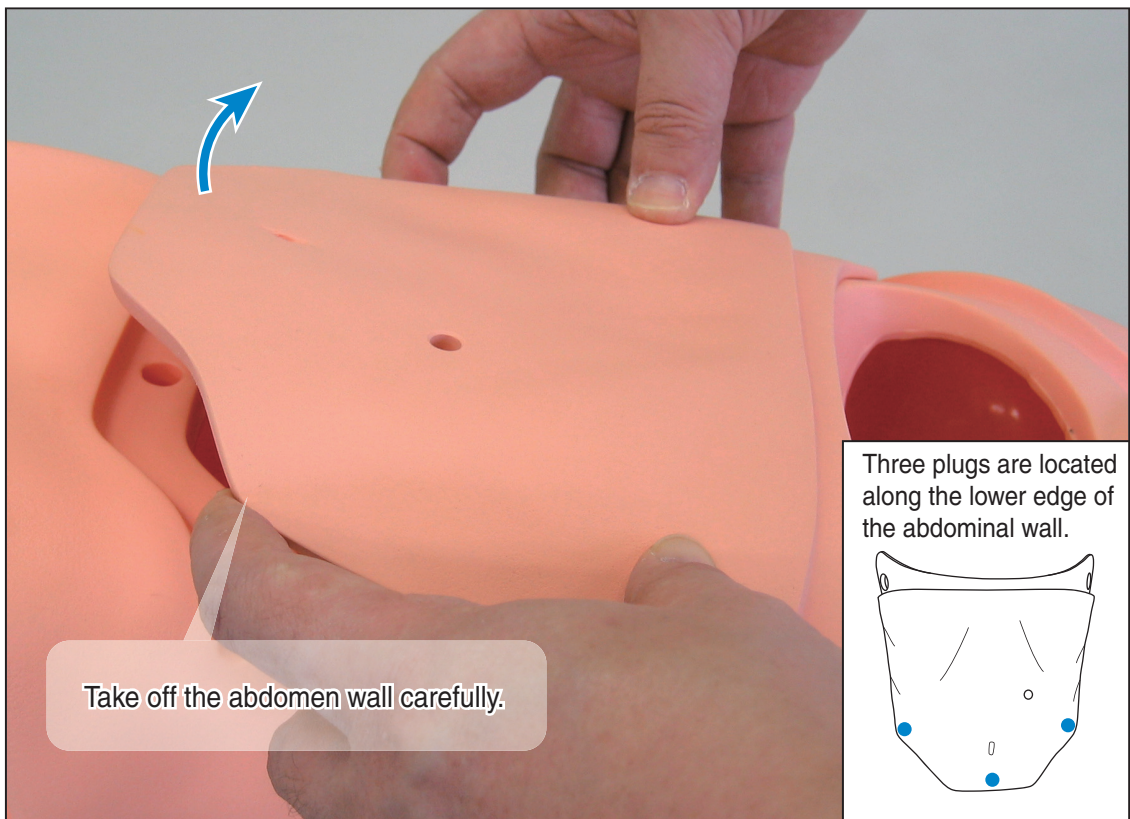


Chest and abdomen covers (continued)

3



4



Handling and Storage Instruction

DOs

Always handle the manikin and other components with utmost care.

Always use the included silicone oil as lubricant to relevant part for tube, catheter, and cannula insertion areas.

Clean the manikin surface with a soft wet cloth, using water or ethanol, and let air dry. Apply talcum powder before storing to avoid stickiness.

Store the manikin at room temperature, avoiding direct sunlight, high temperature or high humidity.

The tubing may yellow over time; this does not reduce performance of the unit.

Use the recommended size of catheters listed below (or narrower). Using larger catheters can cause breakage at the various openings.

- PEG tube 20Fr . (6.7mm) × 3.4cm
- Nasal feeding catheter 14Fr . (4.7mm) × 120cm
- Nasal feeding catheter 12Fr . (4.0mm) × 40cm
- Urinary catheter 9Fr . (3.0mm) × 23cm
- Urinary catheter I.D 6,0 8,3 O.D

DON'Ts

Never use the sample catheters included in the B set other than training with the M56 Pediatric Patient Care Simulator. Any other use is unauthorized and the manufacturer claims no liability for damage or injury if used for human patient treatment.

The manikin skin is permeable with various inks; do not use ink pens or leave printed material near the manikin's skin, including this instruction manual.

Do not use organic solvents to clean the manikin.

Ink from this manual will stain the manikin - do not leave in contact with the skin.

KYOTO KAGAKU co.,LTD

URL: <http://www.kyotokagaku.com> e-mail: rw-kyoto@kyotokagaku.co.jp

Worldwide Inquiries & Ordering

Kyotokagaku Head Office and Factories:

15 Kitanechoya-cho, Fushimi-ku, Kyoto, 612-8388, JAPAN

Tel: +81-75-605-2510 Fax: +81-75-605-2519

All American regions

KYOTOKAGAKU AMERICA INC.

3109 Lomita Boulevard, Torrance, CA 90505-5108, USA

Tel: 1-310-325-8860 Fax: 1-310-325-8867

Europe, Russia & Africa

Kyoto Kagaku EuropeGmbH.

De-Saint-Exupery-Str.10,60549 Frankfurt, Germany

TEL : +49-69-5060-28160

The contents of the instruction manual are subject to change without prior notice

No part of this instruction manual may be reproduced or transmitted in any form without permission from the manufacturer
Please contact manufacturer for extra copies of this manual which may contain important updates and revisions.

Please contact manufacturer with any discrepancies, typos, or mistakes in this manual or product feedback. Your cooperation is greatly appreciated.