

M56B

11355-000

# Pediatric Patient Care Simulator

## A comprehensive day-to-day, long-term care manikin for pediatric patients

Provides a variety of features for practicing essential skills and simulating pediatric patient care scenarios for nurses and caregivers

### Product Supervision

Medical Association of Osaka Prefecture  
Pediatric Medical Care Exploratory Committee



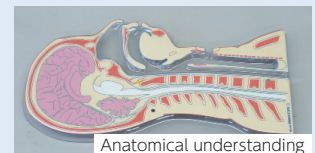
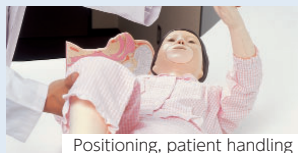
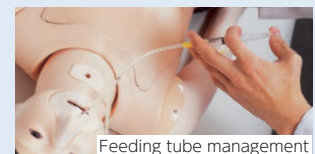
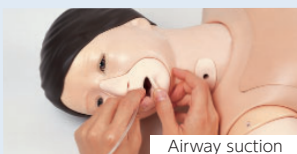
### FEATURES

- 1 | Life-like 6 years old model
- 2 | Able to sit in an upright position without support
- 3 | Oral, nasal and tracheal airway suction interchangeable female and male genitalia for catheterization training

### SKILLS

- | Positioning
- | Patient handling
- | Airway suction:
  - | oral, nasal or through a tracheostomy opening
- | Percutaneous Endoscopic Gastrostomy (PEG) care
- | Feeding tube management
- | Male & female catheterization

### IMAGES



### DESCRIPTIONS

#### SPECIFICATIONS

Size: 125cm / 49.2 in. Weight: 13kg / 28.6lbs

#### SET INCLUDES

1   pediatric manikin	1   uniform (gym clothes)
1   head & neck anatomy plate	1   set of catheters (sample)
1   male & female genitalia	1   lubricant
1   syringe	
1   irrigation bag	

#### MATERIALS

Soft resin, hard resin  
Latex free

#### REPLACEMENT PARTS

11355-020 head and mask explanation panel  
11355-030 valve for catheterization  
11355-040 replacement mouth/ nose part

\* Instruments are not included.