

M66

Medical Foot Care Simulator

Simulate basic podiatric care

The maintenance of healthy feet makes a significant impact on the patient's quality of life. Training for simple trimming of nails and callosities as well as general education on basic foot care

Product Supervision

Takako Egawa
Dean, Professor, Kansai University of
Nursing and Health Sciences
Professor Emeritus, Kyoto University



Trimming and removal of the callosities



Trimming and removal of the corns

FEATURES

- 1 | Realistic sensation and anatomically accurate
- 2 | Replaceable nails, corn and callosities

SKILLS

- | Trimming and clipping of toe nails (thickened nail, ingrown nail and nail ringworm)
- | Trimming and removal of callosities
- | Trimming and removal of corns
- | Foot assessment (demonstration)
- | Foot massage (demonstration)

DESCRIPTIONS

SPECIFICATIONS

Size: W21xD21xH28cm/ 8.3x8.3x11 inch Weight:1.2g/2.9lbs

SET INCLUDES

1	foot model with swivel stand	10	callosities
20	toe nails A (thickened ingrown nail)	10	corns
20	toe nails B (thickened nail with ringworm)	1	instruction manual

REPLACEMENT PARTS

11273-020	1 replacement parts set for M66	11273-030	Replacement toe nail A 20 pcs
	-toe nail A 20 pcs	11273-040	Replacement toe nail B 20 pcs
	-toe nail B 20 pcs	11273-050	Replacement callosity 10 pcs
	-callosity 10 pcs	11273-060	Replacement corn 10 pcs
	-corn 10 pcs		

* Instruments are not included.

M69

Pressure Sores Care Simulator



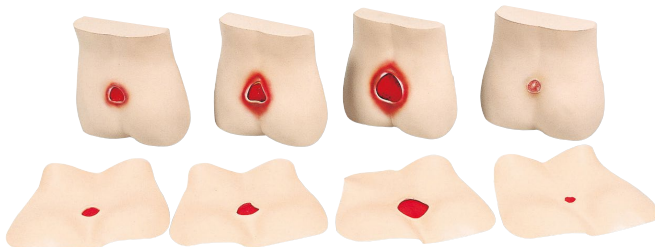
Identify four different stages of pressure ulcers

FEATURES

- 1 | 4 pressure sore manikins for classroom demonstration
- 2 | 4 pressure sore skin sets for hands-on care
- 3 | Watercolor paint and palette set included for painting original pressure sores and cleansing of the sores.

SKILLS

- | Pressure sores staging
- | Pressured area care



DESCRIPTIONS

SPECIFICATIONS

Size: 38x38cm / 15x15 inch

SET INCLUDES

4	types of the models for demo
4	types of the sore skins model
1	set of water color paints
1	set of brushes
1	set of palettes

MATERIALS

Soft resin
Latex free