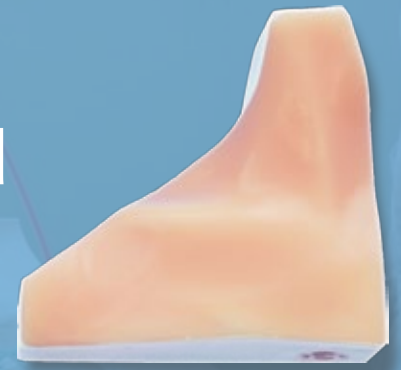


CVC Placement Pad

FEATURES



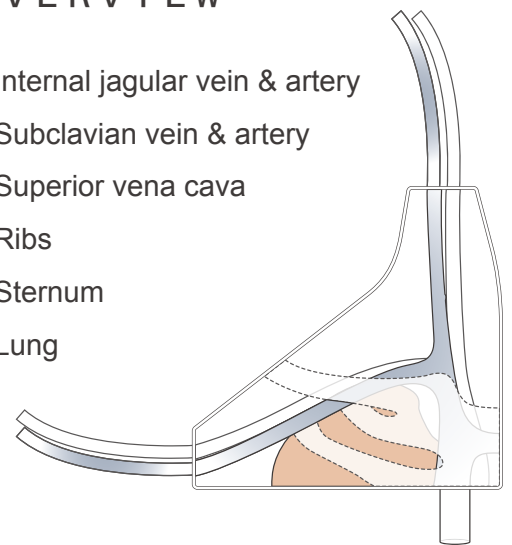
CVC Placement Pad provides training in full procedural skills from the needle insertion to catheter insertion.

FEATURES

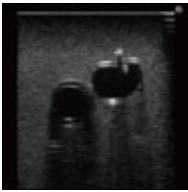
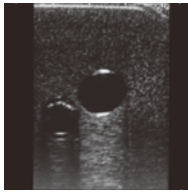
- Repeated insertion and withdrawal of the catheter with less needle marks left on the surface of the pad.
- Both landmark and ultrasound-guided CVC are possible.
- Training for the prevention of mechanical complications, such as arterial puncture and pneumothorax.
- Realistic material of the pad provides true-to-life sensations that mimic human tissue.
- Consumable pad provides easy preparation and cleanup.

OVERVIEW

- Internal jugular vein & artery
- Subclavian vein & artery
- Superior vena cava
- Ribs
- Sternum
- Lung



COMPARISON

	CVC placement pad (New pad)	Ultrasound puncture pad (Current pad)	Landmark puncture pad (Current pad)
Puncture	○ Less needle-trace left	△ needle-trace left	△ needle-trace left
Guide wire Dilater insertion / removal	○ No leakage of water	✗ Gouged out and water leakage from the needle-trace.	✗ Gouged out and water leakage from the needle-trace.
Cannulation / decannulation	○ No leakage of water and true-to-life sensation	✗ Catheter is clogged or break off a piece of the pad.	✗ Catheter is clogged or break off a piece of the pad.
Ultrasound image No difference of the quality of the image between new pad and current pad.	○ Realistic imaging 	○ Realistic imaging 	
Pulse (Landmark puncture)	○ Palpation available	✗ No pulse	○ Palpation available

CVC Placement Pad NOTES



NOTES

DOs

- ✓ Use each pad in **only a single session** (one practice).
- ✓ Avoid unnecessary extended exposure to air.
- ✓ Keep the pad away from high temperature, high humidity and direct sunlight.

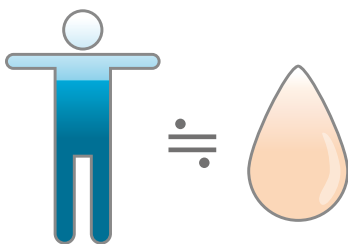
DON' Ts

- ✓ Do not open the package until just before a practice.
- ✓ Do not keep the tubes (vein/ artery) filled with water.
- ✓ Do not leave any water on the pad.



Dr. Gel

Pad material simulates human tissue of the pad.



Human

More than 70% is water

New pad

POINT Avoid from extended exposure to air, as it can cause material shrinkage and damage.

Temporary Storage Method

If you open the package by mistake;

1. Apply the film tightly against the surface, to make sure there is no space or air trapped to cause evaporation of material moisture.
2. Put the pad in its case.
3. Store it in a sealed container or in **an airtight bag that can be sealed.**

POINT This is a temporary measure only.



or

