

M93UB



CVC Insertion Simulator II

Conduct a variety of CVC insertions and management simulations and training sessions with the assistance of 3 interchangeable pads



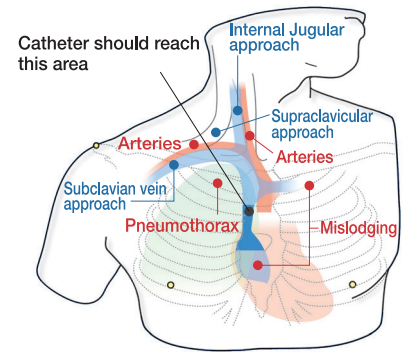
Product Supervision

Masahiro Tanabe, M.D., Ph.D., Professor Director General Medical Education Center Chiba University School of Medicine

Kinya Sando, M.D., Ph.D., Professor Director Department of Human Dietetics Graduate School of Human Science Osaka Shoin Women's University

Masanori Hoki, M.D., Ph.D., Professor Department of Human Dietetics Graduate School of Human Science Osaka Shoin Women's University

Joho Tokumine, M.D.Ph.D., Department of Anesthesia, Kawatetsu Chiba Hospital



FEATURES

- 1 | Realistic ultrasound-guided CVC
- 2 | Landmark puncture pad with anatomically correct vein bifurcations simulates mechanical complications including pneumothorax, mislodging and artery puncture
- 3 | Transparent anatomical block for anatomical understanding and guide wire manipulation
- 4 | Introductory ultrasound training block to acquire basics of ultrasound guided venous access
- 5 | Both internal jugular and subclavian (axillary) veins are accessible

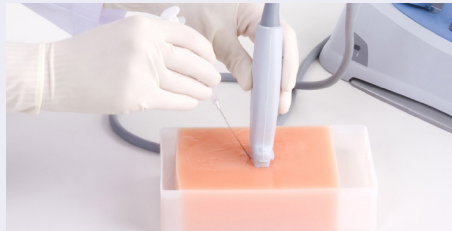
SKILLS

- | Ultrasound-guided CVC
- | Landmark guided CVC
- | Ultrasound-guided venous access
- | Prevention of mechanical complications

KEY FEATURES



Transparent anatomical block



Ultrasound training block



Ultrasound puncture pad

DESCRIPTIONS

SPECIFICATIONS

Size: W40 x D20 x H 34 cm
W15.8 x D7.9 x H 13.4inch

Weight: 2.3kg/ 5lbs

MATERIALS

Soft resin
Latex free

RECOMMENDED DEVICES

Ultrasound scanner and needles are not included.

REPLACEMENT PARTS

SET INCLUDES

1 male upper torso manikin	10 Cotton Swab for Coloring (red)	1 syringe
1 landmark puncture pad	10 Cotton Swab for Coloring (blue)	1 sample syringe
1 ultrasound puncture pad	1 air bulb	1 sample needle
1 transparent anatomical block	2 plastic jars	
1 introductory ultrasound training block	1 irrigation bottle	

11347-119	2 landmark puncture pads
11347-170	2 ultrasound puncture pads
11347-210	2 introductory ultrasound training blocks
11347-240	2 CVC placement pads
11347-250	pulsation unit for CVC placement pad
11347-260	1 pulsation unit (for M93UB)
11347-320	irrigation bottle