

M98

Internal Organ Anatomical Model “ECHO-ZOU”

Instruction Manual

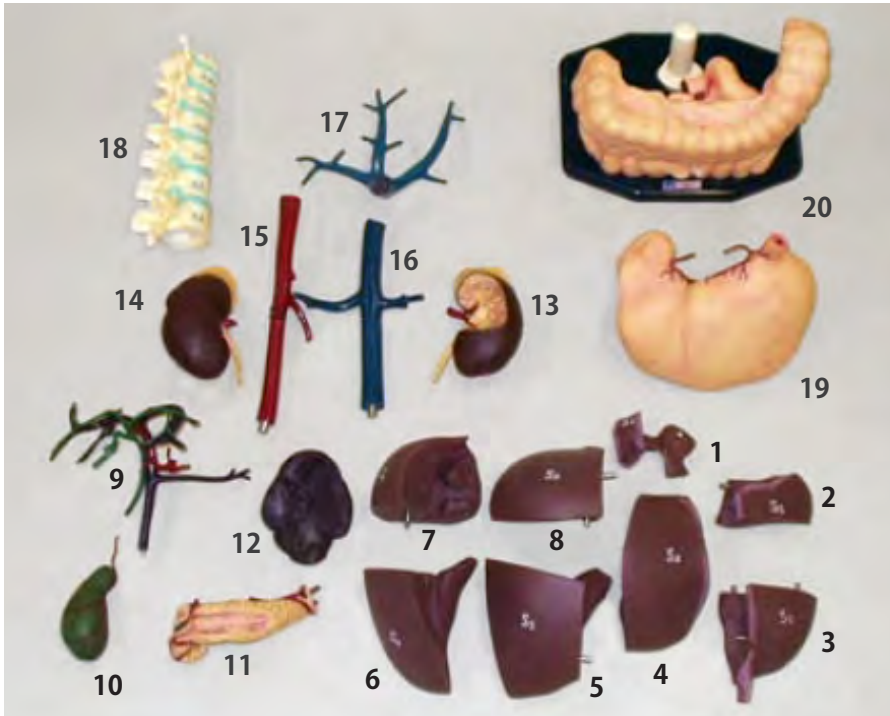
Contents

- Components P.1
- Assembly instruction P.2-P.9



KYOTO KAGAKU co.,LTD

Components



Separates into 20 parts

No	Part name	No	Part name
1	Hepatic segment S 1	11	Pancreas
2	Hepatic segment S 2	12	Spleen
3	Hepatic segment S 3	13	Right kidney
4	Hepatic segment S 4	14	Left kidney
5	Hepatic segment S 5	15	Abdominal aorta
6	Hepatic segment S 6	16	Inferior vena cava
7	Hepatic segment S 7	17	Hepatic veins
8	Hepatic segment S 8	18	Spinal column
9	Portal vein, Bile duct and Hepatic vein	19	Stomach
10	Gallbladder	20	Large intestine, Small intestine (base)

Assembly instruction

[Disassembly]

The parts of ECHO-ZOU can be detached by any order.

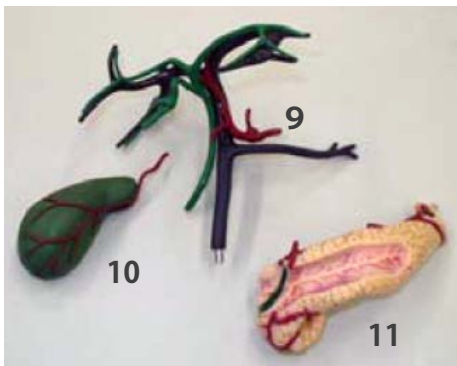
[Assembly]

Follow the order instructed below. The numbers from 1 to 20 shown in the instruction correspond to the part numbers indicated in the part list.

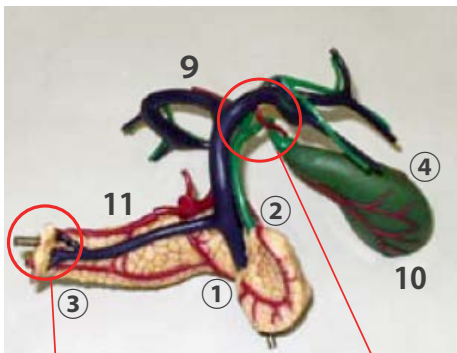
Important information is highlighted in red.

* Please note that images are of prototypes.

Front view



Rear view



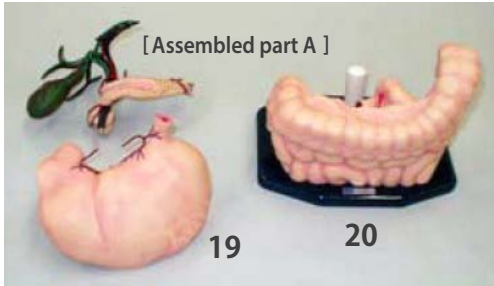
Insert the tips into the pits.

Arteria cystica (red line) comes outside of the bile duct (green line).

Assembly of the portal vein, bile duct and hepatic vein 9, gallbladder 10 and pancreas 11. [Assembled part A]

- ① Insert the lower part of superior mesenteric vein (blue line of 9) in to the corner at the left posterior of the pancreas 11.
- ② Insert the lower part of the common bileduct (green line) to the groove on the right anterior surface of the pancreas.
- ③ Insert the tip of splenic vein (blue line, lower left branch) to the pits at the left posterior end of the pancreas.
- ④ Attach the gallbladder 10 to the bile duct (green line, middle anterior branch), noting the direction.

Assembly instruction

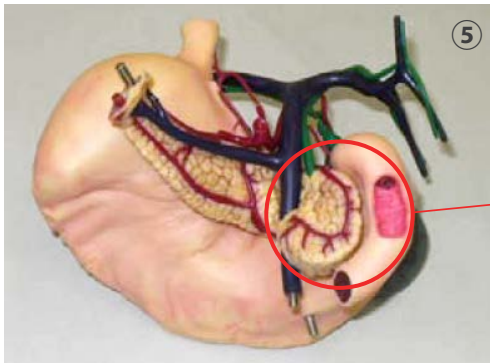


Assembly of the Assembled part A, stomach 19 and intestine base 20.

[Assembled part B]

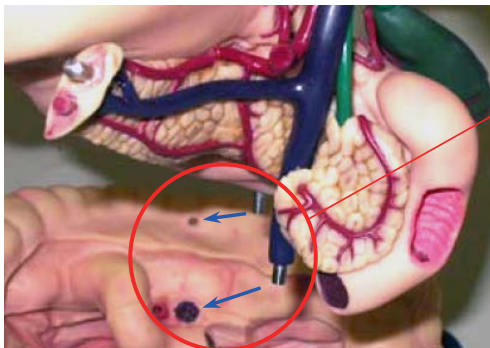


Rear view

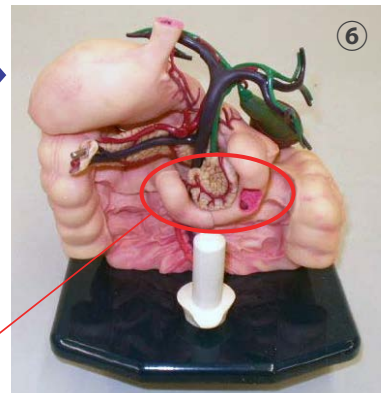


⑤ Fit the Assembled part A to the posterior side of the stomach 19.

Fit the curve of the pancreas to the inner edge of the duodenum.



Insert the two pins firmly into the pits.



⑥ Attach the assembled parts onto the intestine base 20.

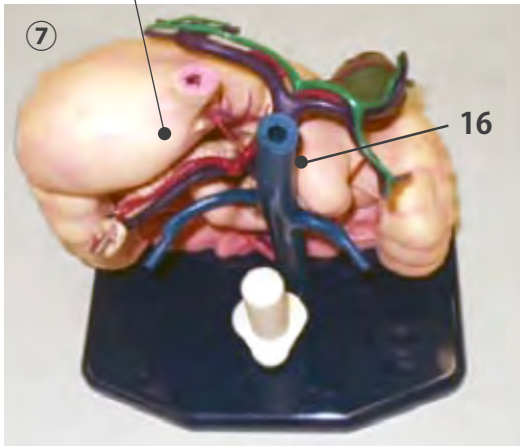
The sections of the duodenum meet here.

Assembly instruction

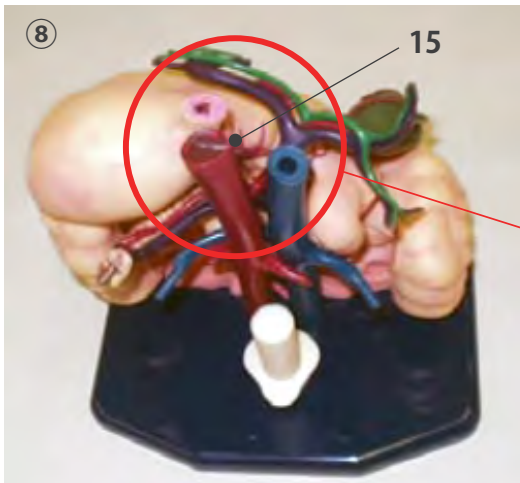
Assembly of the Assembled part B, inferior vena cava 16 and abdominal aorta 15. [Assembled part C]

[Assembled part B]

Rear overhead view



- ⑦ Attach the inferior vena cava 16 by inserting the attachment to the right pit on the base.



- ⑧ Attach the abdominal aorta 15 by inserting the attachment to the left pit on the base.

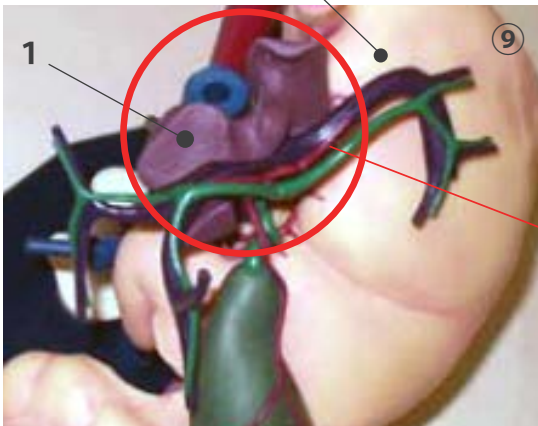
Attach the abdominal aorta after fixing the inferior vena cava. Make the upper branch coming downward from the abdominal aorta pass over the leftside branch of the vein and place the tip inside of the duodenum.

Assembly instruction

Assembly of the Assembled part C, hepatic segment 1 and hepatic artery 17.
[Assembled part D]

[Assembled part C]

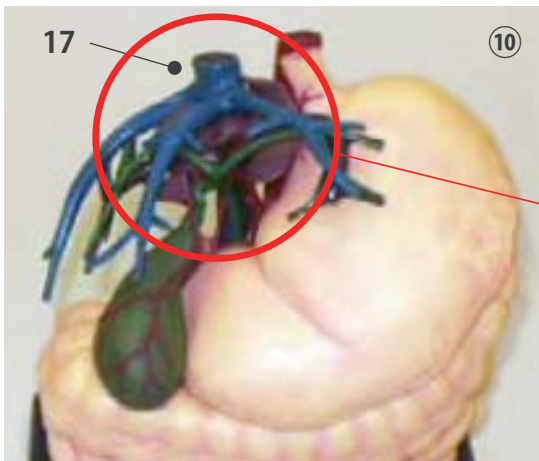
Overhead view



- ⑨ Attach the hepatic segment 1 around the portal vein, bile duct and hepatic artery.

The hepatic segment 1 needs to be attached prior to the hepatic vein..

(The inscription of "S1" to be appeared as normal position.)



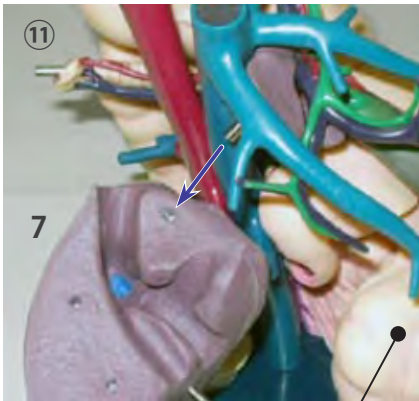
- ⑩ Attach the hepatic artery 17 at the top the inferior vena cava, noting the direction of the notch.

Adjust the direction of the hepatic vein by fitting the notch.

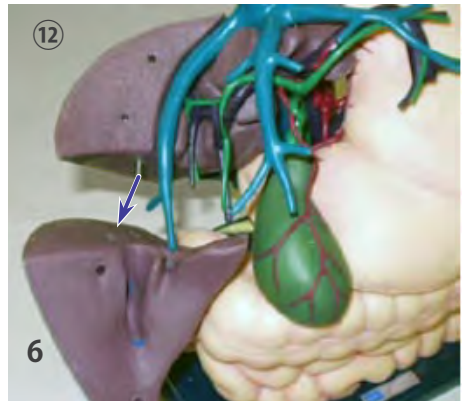
Assembly instruction

Assembly of the Assembled part D, hepatic segment 6 and hepatic segment 7.
[Assembled part E]

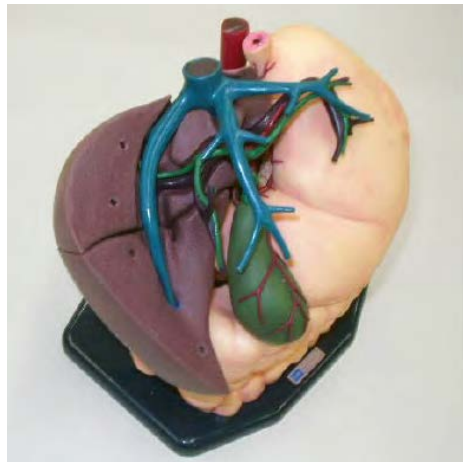
Right side view



[Assembled part D]



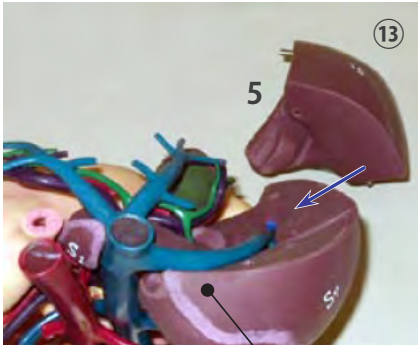
- ⑪ Attach the hepatic segment 7, fitting the groove and the vessels.
- ⑫ Attach the hepatic segment 6, fitting the groove and the vessels.



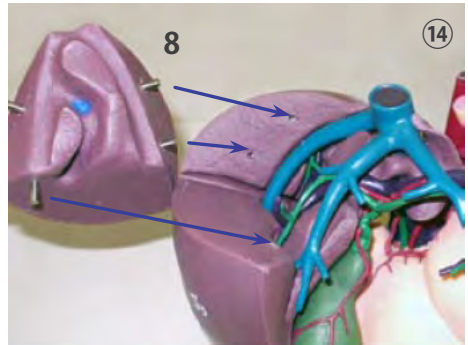
Assembly instruction

Assembly of the Assembled part E, hepatic segment 5 and hepatic segment 8.
[Assembled part F]

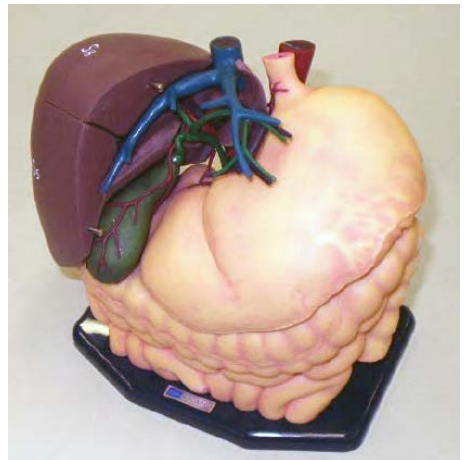
Rear overhead view



[Assembled part E]

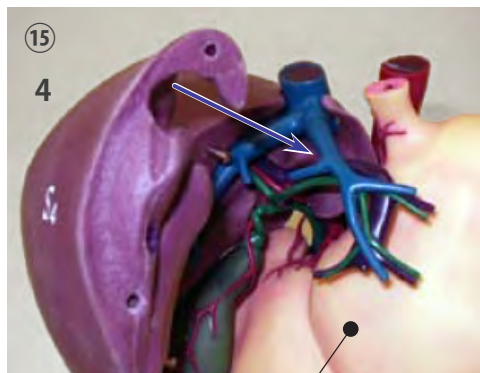


- ⑬ Attach the hepatic segment 5, fitting the groove and the vessels.
- ⑭ Attach the hepatic segment 8, fitting the groove and the vessels.

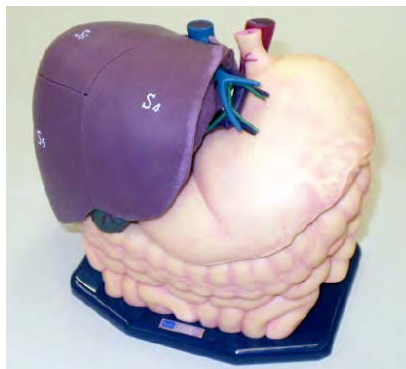


Assembly instruction

Assembly of the Assembled part F, hepatic segment 4. [Assembled part G]



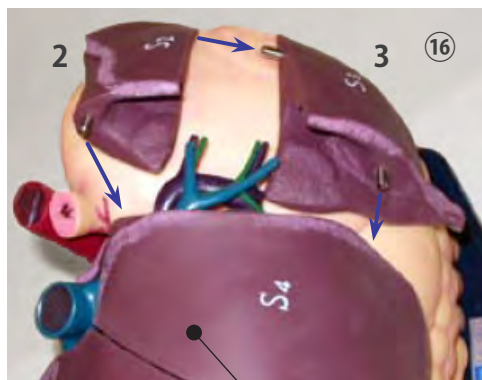
[Assembled part F]



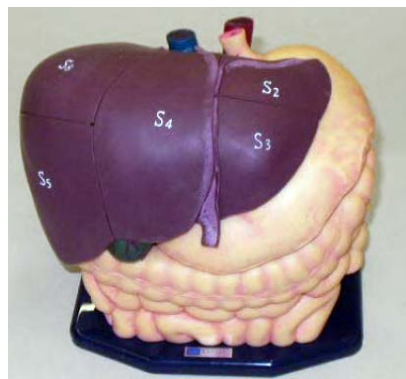
⑮ Attach the hepatic segment 4, fitting the groove and the vessels.

Assembly of the Assembled part G, hepatic segment 2 and 3.

[Assembled part H]



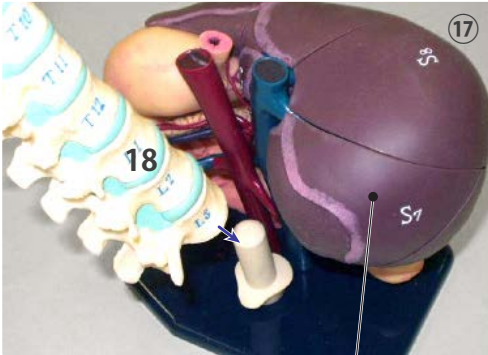
[Assembled part G]



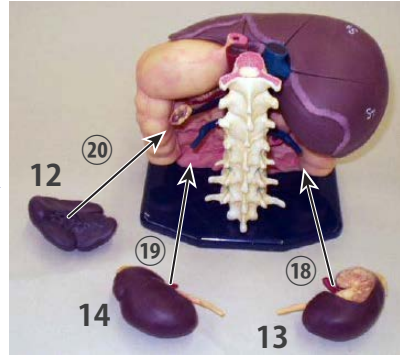
⑯ Attach the hepatic segment 2 and 3, fitting the groove and the vessels.

Assembly instruction

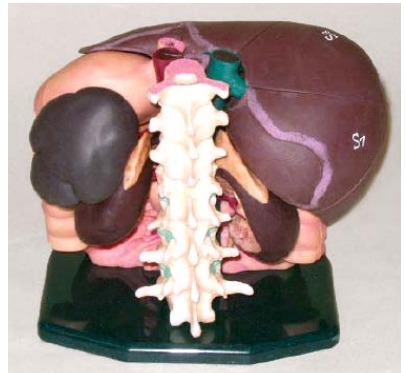
Assembly of the Assembled part H, column 18, right kidney 13, left kidney 14 and spleen 12.



[Assembled part H]



- ⑰ Attach the spinal column 18.
- ⑱ Attach the right kidney 13 to the right suprarenal vein (blue line).
- ⑲ Attach the left kidney 14 to the left suprarenal vein (blue line).
- ⑳ Attach the spleen 12 at the left end of the pancreas.



Assembly completed.

■ Main Office and Factory (World Wide)



WEB • www.kyotogagaku.com

E-MAIL • rw-kyoto@kyotokagaku.co.jp

15 kitanekoya-cho Fushimi-ku Kyoto 612-8388, Japan

TEL: +81-75-605-2510

FAX: +81-75-605-2519

2016.05

■ North and South American regions:



WEB • www.kkamerica-inc.com

E-MAIL • info@kkamerica-inc.com

3109 Lomita Boulevard, Torrance, CA 90505-5108, USA

TEL: +1-310-325-8860

(Toll-free in North America: 877-648-8195)

FAX: +1-310-325-8867