



# Difficult Airway Management Simulator -Assessment System-

## Enhance your intubation technique to ensure and maximize patient safety

Product Supervision

This hands on simulator is the world exclusive system that offers objective feedback on intubation skills. Real time visualization of performance allows evaluation, assessment and identification of areas for improvement.

Atsuo Takanishi, Laboratory of Faculty of Science and Engineering, Waseda University



### FEATURES

- Objective feedbacks are given in two ways:
  - Intubation result: assesses life-saving technique
  - Skills assessment: assesses patient experience
- Assessment criteria feedback is quantitatively monitored and displayed.
- Each session can be saved and stored for review and debriefing.
- A variety of difficult airway conditions can be set by touch panel control.
- Convenient all-in-one unit

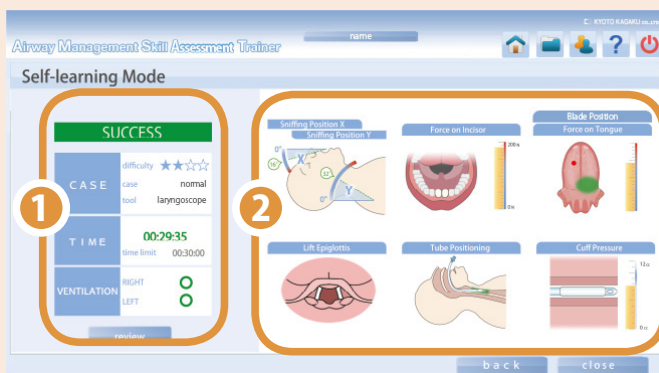
### SKILLS

- Tracheal intubation
- Intubation and ventilation on difficult airways

### KEY FEATURES

#### POINT 1

#### Visual Feedback of Objective Assessment



- Intubation Result Display**  
Successful intubation is defined as dual-lung ventilation within the time limit.

- Multiple Skill Assessment**  
Objective assessment of based upon the data taken by professionals

**POINT 2**

**Normal and 3 Difficulty Levels of Airways**

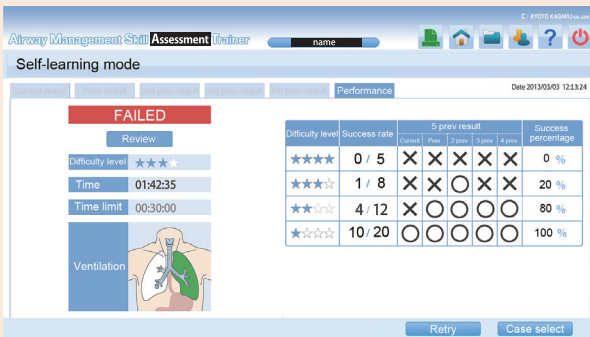


Different levels of difficulty for the intubation procedure can be set with the touch panel. There is one "normal" setting and three additional levels with increasing difficulty.

**POINT 3**

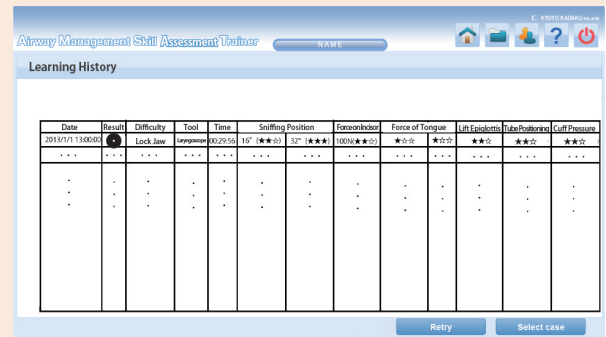
**Records of Personal Training History Support Skills Development**

The performance assessment can be saved so that users can review their skills and check their improvement.



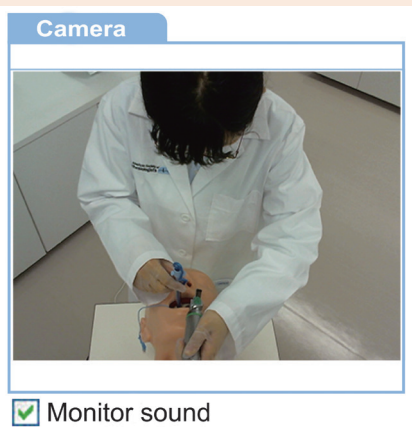
**5 most recent sessions are visually summarized to analyze each achievement**

Sessions are classified by difficulty level, with success rate of the 5 most recent sessions calculated and displayed.



**Record of learning history**

A list of each users' data is recorded



**Movie Recording**

Overhead monitoring and laryngoscope point-of-view can be displayed and recorded along with the assessment data.

**DESCRIPTIONS**

**SPECIFICATIONS**

Size: W50 x D110 x H160 cm / W19.7 x D43.3 x H63 inch  
 Weight: 82 kg/ 181lbs  
 Power: AC100-240V, 50/60 Hz  
 Power Consumption: 120 VA

**SET INCLUDES**

- 1 unit base
- 1 keyboard
- including 1 video camera,
- 1 lubricant for manikin
- 1 monitor, 1 manikin
- 1 instruction manual
- 1 printer
- 1 stereo mini plug

**MATERIALS**

Soft resin  
 Latex free

**REPLACEMENT PARTS**

- 11392-040 1 chest skin
- 11392-050 5 pairs of lungs
- 11392-060 5 stomachs
- 11392-090 1 face mask
- 11390-010 sensor-installed tongue

**RECOMMENDED DEVICES**

(Macintosh laryngoscope) blade size 4  
 (Endotracheal tube) internal diameter 7.5mm  
 (Video laryngoscope) AWS-S200

\* Instruments are not included.

- 11390-020 sensor (blade force and position)