

MW4

11383-000



Ultrasound-Guided Thoracentesis Simulator

MW4A

11383-100

Ultrasound-Guided Thoracentesis Simulator - Strap-on set -

MW15

11394-000

Ultrasound-Guided Pericardiocentesis Simulator

MW17

11396-000

Ultrasound-Guided Thoracentesis/ Pericardiocentesis Simulator

Product Supervision

Takahiro Amano, M.D.
Vice President
Senior Vice-Dean, Postgraduate School
Professor and Director, Center of Postgraduate
Medical Education
International University of Health and Welfare
Honorary Director, Sanno Medical Center



SKILLS

Thoracentesis

- | Patient positioning
- | Recognition of anatomical landmarks by ultrasound
- | Assessment of level and volume of pleural effusion
- | Determination of insertion site
- | Needle insertion and collection of fluid

SKILLS

Pericardiocentesis

- | Patient positioning
- | Visualization of pericardial fluid under ultrasound scanning
- | Landmark palpation
- | Needle insertion to the pericardial space
- | Aspiration of pericardial effusion

DESCRIPTIONS

SET INCLUDES

	MW4	MW4A	MW15	MW17
1 adult chest model	✓		✓	✓
1 mid-axially line unit	✓	✓		✓
1 mid-scapular line unit	✓	✓		✓
1 pericardiocentesis unit			✓	✓
1 pillow for positioning	✓		✓	✓
1 explanation model for thoracentesis	✓			✓
1 instruction manual	✓	✓	✓	✓

Accessories

	MW4	MW4A	MW15	MW17
1 irrigator	✓			✓
1 funnel	✓	✓		✓
1 syringe (50ml)	✓	✓	✓	✓x2
1 joint hose			✓	✓
1 tube with three-way stopcock	✓	✓		✓
1 plastic jar	✓	✓		✓

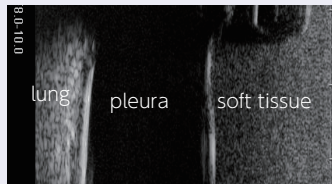
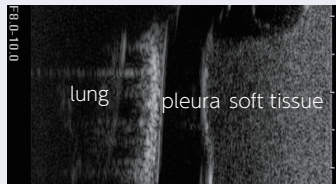
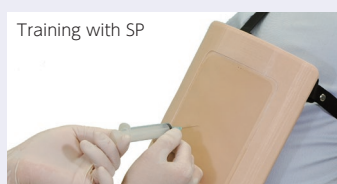
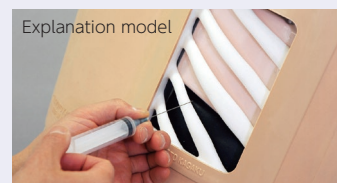
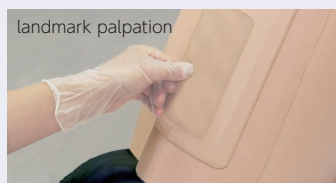
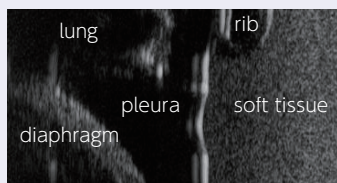
Thoracentesis

Simulate thoracentesis on both a torso and SP

This Ultrasound-Guided Thoracentesis Simulator features two types of puncture units: mid-scapular line access and mid-axillary line access. Strap-on (wearable) puncture units facilitate hybrid training sessions with simulated patients

FEATURES

- 1 | Palpable ribs
- 2 | Realistic needle-tip insertion and resistance
- 3 | Strap-on units to practice patient positioning and communication
- 4 | Two sites for access: right mid-scapular line and left mid-axillary line
- 5 | Volume of pleural effusion can be controlled to set different levels of difficulty
- 6 | Body torso for independent training (except for MW4A)



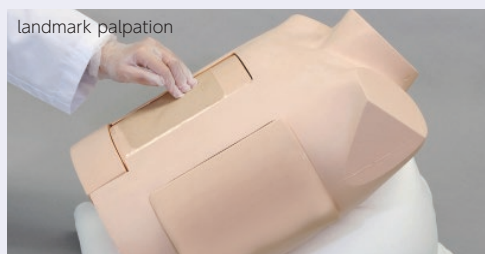
Pericardiocentesis

Practice patient safety during pericardiocentesis with ultrasound guidance

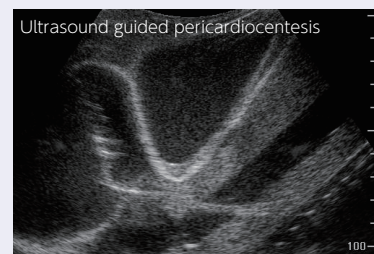
This simulator allows trainees to insert the needle under ultrasound guidance, pierce the "pericardial sac" and aspirate pericardial fluid

FEATURES

- 1 | Durable and replaceable puncture pad
- 2 | Practice both the subxiphoid approach and parasternal approach through palpable and ultrasonic landmarks
- 3 | Realistic needle tip sensation during puncture of the "pericardial sac"



Identification of "Larrey's space" (left xiphisternal junction) for needle insertion



Inserting needle to the pericardial space with ultrasound guidance. Ventricles, ribs, pericardium, liver and main artery can be visualized

DESCRIPTIONS

SPECIFICATIONS

Torso size: W40 x D25 x H50 cm / W15.7 x D9.9 x H19.7 in.
 Thoracentesis pad size: W16 x D7 x H21 cm / W6.3 x D2.76 x H8.3 in.
 Pericardiocentesis pad size: W16 x D14 x H21 cm / W6.3 x D5.6 x H8.3 in.
 Weight: MW4: 9.17kg / 20.2lbs
 MW15: 8.65kg / 19.7lbs
 MW17: 9.65kg / 21.27lbs

MATERIALS

Soft resin, hard resin
 Latex free

REPLACEMENT PARTS

11383-010 2 mid-axially line puncture pads
 11383-020 2 mid-scapular line unit puncture pads
 11383-030 2 replacement lungs
 11394-010 2 pericardiocentesis pads for MW15/MW17

RECOMMENDED DEVICES

Thoracentesis: 22 G/ 23 G needle
 Pericardiocentesis: 18 G needle

Ultrasound scanner and needles are not included.