

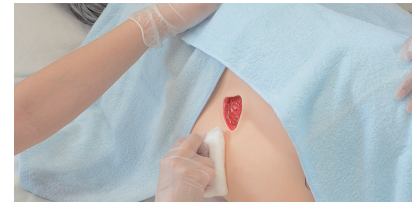


# Basic Patient Care Simulator "Keiko"

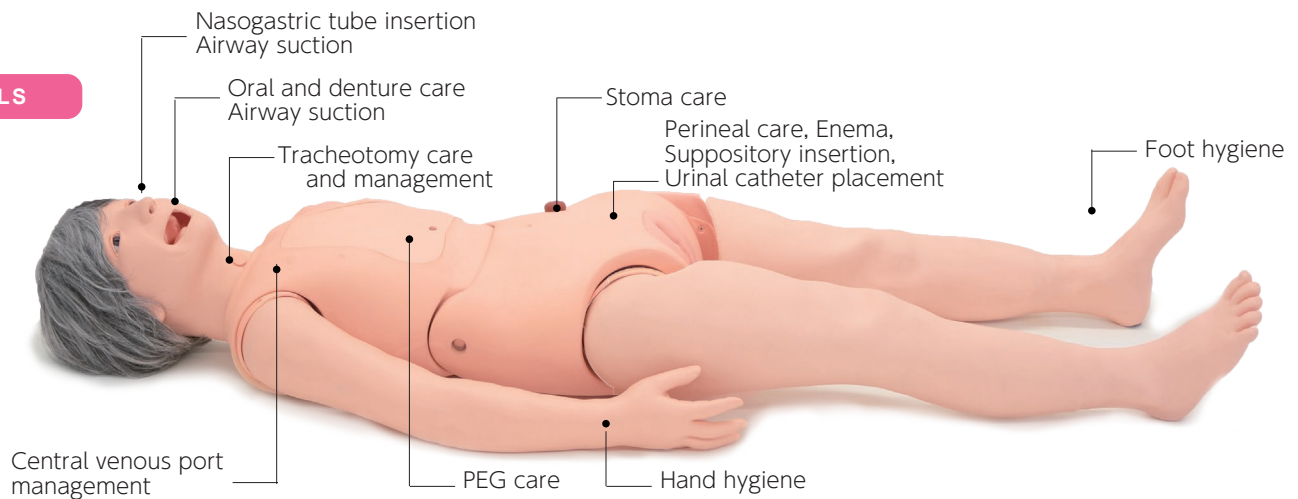
## Meet Keiko :

**Patient simulator of geriatric care for trainees including home-care nurses and caregivers**

Keiko simulates patients under long-term cares in a variety of health care settings



### SKILLS



#### Feeding

| Tube feeding (oral/nasal)

#### Exercise

| Body positioning  
| Patient transfer

#### Wound Care

| Pressure sore care

#### Pain Management

| Hot and Cold Compressions

#### Elimination

| Enema  
| Urinary catheterization  
| Stoma care  
| Bedpan practice

#### Hygiene

| Oral care  
| Bed bathing  
| Change of clothes  
| Perineal care  
| Hair care\*  
| Grooming and appearance

#### Respiratory Care

| Oxygen inhalation  
| Airway suction  
| Postural drainage  
| Tracheotomy care

#### Others

| Postmortem care

#### Drug Administration

| Suppository

\* Optional

## KEY FEATURES

### Basic Patient Care

#### Oral Care

- Oral care on the bed and wheel chair
- Special care for patients with feeding tubes



- | Oral assessment
- | Teeth brushing
- | Denture care

#### Pressure sores care

- Learn stages of pressure sores
- Pressure sore care



- | Stage 2: Scapula
- | Stage 3: Great trochanter
- | Stage 4: Sacrum bone
- | Unstageable: Heel

#### Perineal care

- Anatomically correct genitals for detailed care



#### Body positioning and transfer

- Communication
- Correct manual handling techniques
- Patient safety



- | Changing body positions
- | Supporting patient transfer

### Medical Understanding

#### Airway Suction

- Understanding the procedure



- | Airway suction:  
oral, nasal and tracheotomy  
(\*tube insertion only)
- | Tube feeding:  
oral, nasal and PEG  
(\*tube insertion only)

#### Daily care with medical understandings



- | Stoma care
- | Bed bathing for the patients with central venous port
- | Perineal care for the patients with urinal catheters



Photo: Kyoto College of Nursing

## DESCRIPTIONS

### SPECIFICATIONS

Size: 149 cm / 58.7 inch Weight: 15kg / 33lbs

### MATERIALS

Latex free  
Soft resin

### SET INCLUDES

1 manikin	1 under pants
1 denture	1 wrench
1 wig	1 instruction manual
1 oral cover for suctioning	1 lubricant for training models
1 female genitalia	1 lubricant for catheterization
1 male genitalia	

### REPLACEMENT PARTS

11405-010	female genitalia
11405-020	male genitalia
11401-080	dentures
11229-060	oral cover for suctioning
11229-050	lubricant for training models
11381-800	lubricant for catheterization

### OPTIONAL PARTS

12746-020	tracheotomy tube II
11251-320	simulated suppository set
11251-330	simulated feces set
11405-030	pajamas
11404-030	washable wig (elderly)
11229-070	sputum

### RECOMMENDED DEVICES

#### Nasogastric tube feeding:

-Nasal catheter 12fr -14fr

-Gastrostomy catheter for replacements 20fr

#### Indwelling Urinary Catheter:

16fr (male) / 14fr (female)

\* A wheelchair is not included.