



MW4

# Ultrasound-Guided Thoracentesis Simulator

MW4A

# Ultrasound-Guided Thoracentesis Simulator - Strap-on set -

MW15

# Ultrasound-Guided Pericardiocentesis Simulator

MW17

# Ultrasound-Guided Thoracentesis/ Pericardiocentesis Simulator

Product Supervision

Takahiro Amano, M.D.  
 Vice President  
 Senior Vice-Dean, Postgraduate School  
 Professor and Director, Center of Postgraduate Medical Education  
 International University of Health and Welfare  
 Honorary Director, Sanno Medical Center



**SKILLS Thoracentesis**

- | Patient positioning
- | Recognition of anatomical landmarks by ultrasound
- | Assessment of level and volume of pleural effusion
- | Determination of insertion site
- | Needle insertion and collection of fluid

**SKILLS Pericardiocentesis**

- | Patient positioning
- | Visualization of pericardial fluid under ultrasound scanning
- | Landmark palpation
- | Needle insertion to the pericardial space
- | Aspiration of pericardial effusion

**DESCRIPTIONS**

**SET INCLUDES**

	MW4	MW4A	MW15	MW17
1 adult chest model	✓		✓	✓
1 mid-axially line unit	✓	✓		✓
1 mid-scapular line unit	✓	✓		✓
1 pericardiocentesis unit			✓	✓
1 pillow for positioning	✓		✓	✓
1 explanation model for thoracentesis	✓		✓	✓
1 instruction manual	✓	✓	✓	✓

**Accessories**

	MW4	MW4A	MW15	MW17
1 irrigator	✓			✓
1 funnel	✓	✓		✓
1 syringes (50ml)	✓	✓	✓	✓x2
1 joint hose			✓	✓
1 tube with three-way stopcock	✓	✓		✓
1 plastic jar	✓	✓		✓



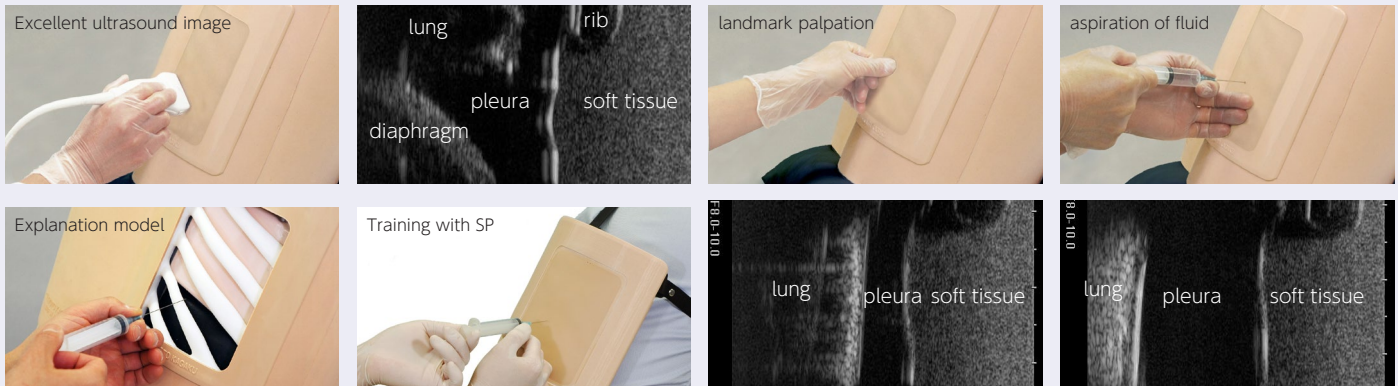
## Thoracentesis

### Simulate thoracentesis on both a torso and SP

Ultrasound-Guided Thoracentesis Simulator features two types of puncture units: mid-scapular line access and mid-axillary line access. Strap-on (wearable) puncture units facilitates hybrid training sessions with simulated patients.

#### FEATURES

- 1 | Palpable ribs
- 2 | Realistic needle-tip insertion and resistance
- 3 | Strap-on units to practice patient positioning and communication
- 4 | Two sites for access: right mid-scapular line and left mid-axillary line
- 5 | Volume of pleural effusion can be controlled to set different levels of difficulty.
- 6 | Body torso for independent training. (Only for MW4)



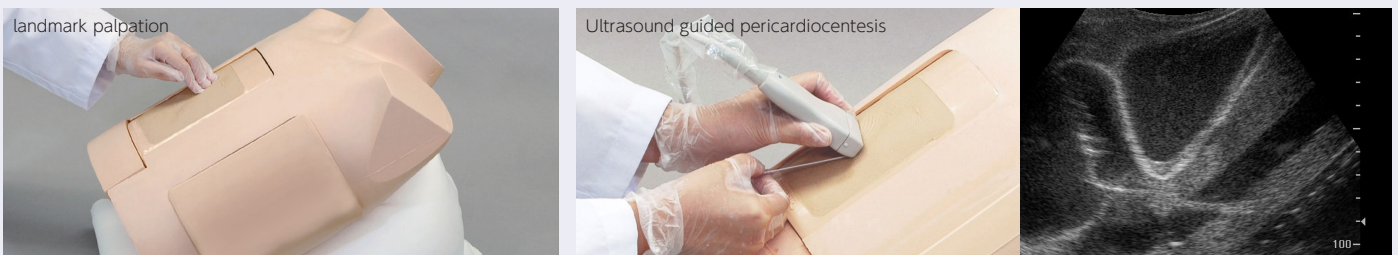
## Pericardiocentesis

### Practice patient safety during pericardiocentesis with ultrasound guidance

This simulator allows trainees to insert the needle under ultrasound guidance, pierce the "pericardial sac" and aspirate pericardial fluid.

#### FEATURES

- 1 | Durable and replaceable puncture pad
- 2 | Practice both the subxiphoid approach and parasternal approach through palpable and ultrasonic landmarks.
- 3 | Realistic needle tip sensation during puncture of the "pericardial sac"



Identification of "Larrey's point" (left xiphisternal junction) for needle insertion.

Inserting needle to the pericardial space with ultrasound guidance. Ventricles, ribs, pericardium, liver and main artery can be visualized.

#### DESCRIPTIONS

##### SPECIFICATIONS

Torso size: W40 x D25 x H50 cm / 15.7 x 9.9 x 19.7 inch  
 Thoracentesis pad size: W16 x D7 x H21 cm / 6.3 x 2.76 x 8.3 inch  
 Pericardiocentesis pad size: W16 x D14 x H21 cm / 6.3 x 5.6 x 8.3 inch

##### MATERIALS

Soft resin, hard resin  
 Latex free

##### REPLACEMENT PARTS

11383-010 puncture pad  
 11383-020 mid-scapular line unit puncture pads  
 11383-030 replacement lung  
 11394-010 pad for MW15

##### RECOMMENDED DEVICES

Thoracentesis: 22 G/ 23 G needle  
 Pericardiocentesis: 18 G needle