



Caution

Do not mark on the model and other components with pen nor leave printed materials contacted on surface.
Ink marks on the models cannot be removed.

MW60

Tracheostomy Simulator

Instruction Manual



Contents

- Features and Cautions P. 1
- Before use P. 2
- Preparation
 - Setup and fixation of skins P. 3
- Training
 - Confirmation of catheter position
 - Exchange of Skin and Subcutaneous tissue for tracheostomy P. 4
- After training
 - Storage P. 5

Manufacturer's note

Thank you for purchasing MW60 Tracheostomy Simulator. This is the training model which can practice puncture/incision of cricothyroid ligament. Please use this as training model for medical education.

Please read

Please do not use this model outside of it's original purpose. Please be reminded that the manufacturer is not responsible for the unlikely damage or accidents by the way of use not written in this instruction.

Features

- 1. Anatomically correct cricoid cartilage and thyroid cartilage with life-like senses of touch.
- 2. Multiple use possible by rotation of neck skins.
- 3. Adhesives to prevent slips of the simulator
- 4. Can visually check whether catheters are inserted properly

Cautions

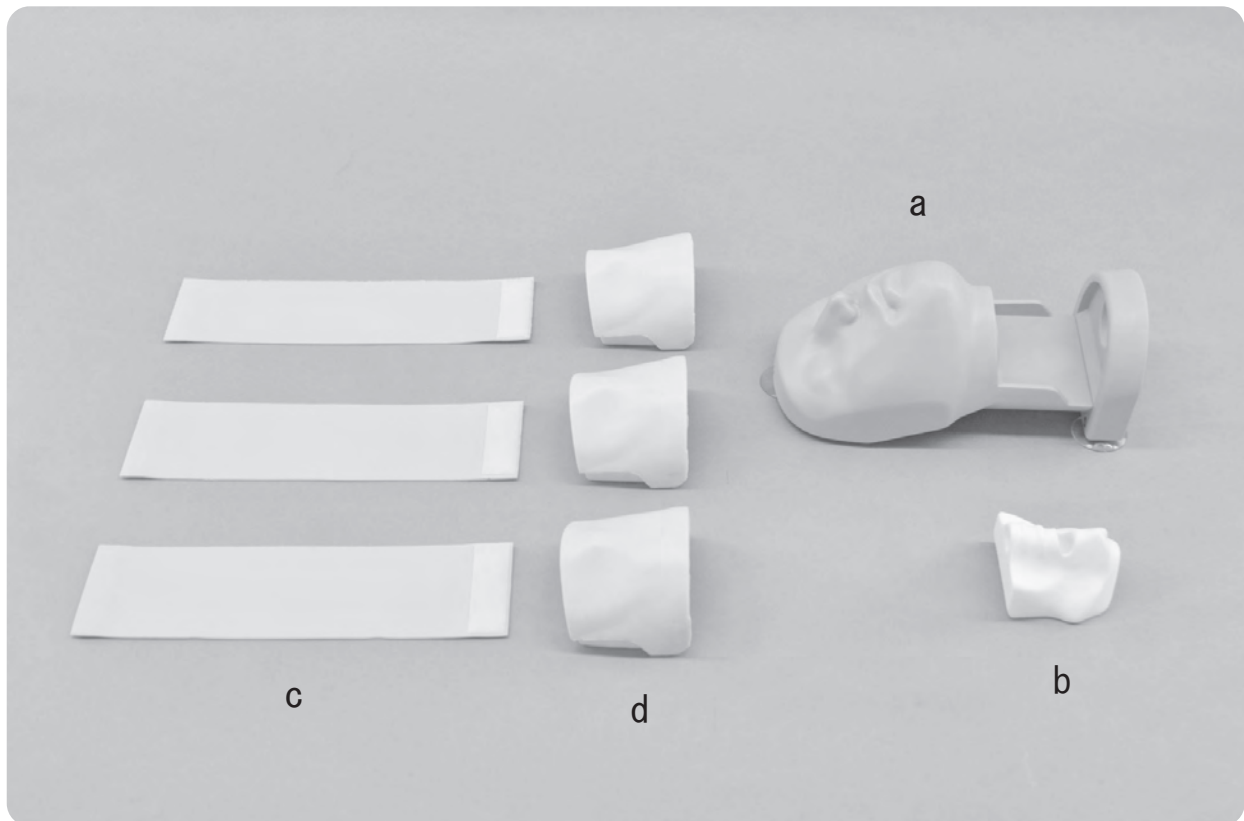
- | | |
|---|--|
| <ul style="list-style-type: none"> ● Handle the manikin and the components with care.
Be sure not to drop or add shock to the manikin and its components. The product uses special resins and materials and such shock may cause irreparable damage to the product. | <ul style="list-style-type: none"> ● Do not let ink from pens, newspapers, this manual or other sources come into contact with the manikin, as they cannot be cleaned off the manikin skin. |
| <ul style="list-style-type: none"> ● The manikin skin may be cleaned with a wet cloth using mildly soapy water or diluted detergent if necessary. In case the manikin is not clean enough, alcohol can be used. Do NOT use organic solvent such as thinner. | <ul style="list-style-type: none"> ● Do not write on the model with ballpoint pen or felt-tip pen. |
| <ul style="list-style-type: none"> ● Storage in a dark, cool and dry space will help prevent the skin colors from fading and the product from deforming. | <ul style="list-style-type: none"> ● The color on its surface may change over time, however, this should not affect the quality of its performance. |

Before use

Before use

Set includes

Before you start, please ensure that you have all components listed below.

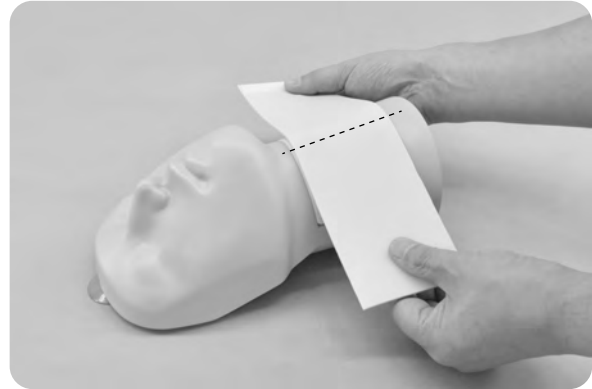


- a) Main Body..... 1
- b) Cricoid cartilage..... 1 (Preset)
- c) Skin for tracheostomy / 3
- d) Subcutaneous tissue for tracheostomy..... 3 (1 preset)
- e) Instruction manual

Setup

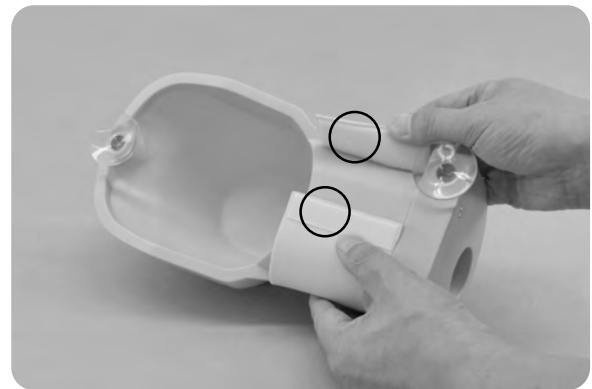
1. Attach the skin for tracheostomy to the subcutaneous tissue. Please adjust the center of the skin to the center of main body.

* There is no front and back side of the skin.



2. Turn the main body around, and attach the velcros at the edge and fix the skin.

Attachment
completed

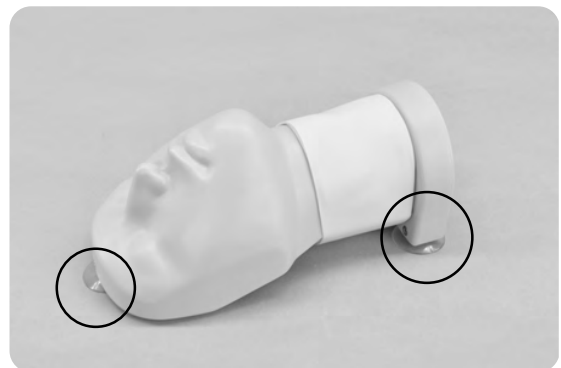


2. Fixation

3. Turn the main body around, and fix the body by three suction cups, and the setting is finished.

! Caution Please use flat surface to fix main body

When detaching the main body, hold up the convex part of the suction cup.

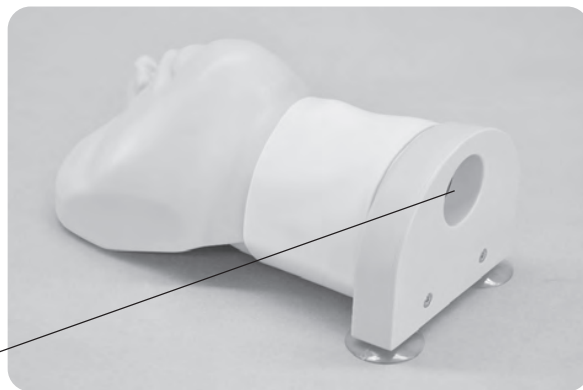


Confirmation of catheter position

1. Accurate insertion of catheter can be confirmed by visually checking the catheter position.



Opening for confirmation



Exchange of Skin and Subcutaneous tissue

Exchange of skin

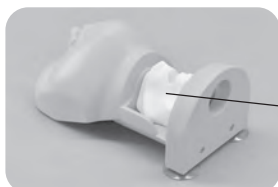
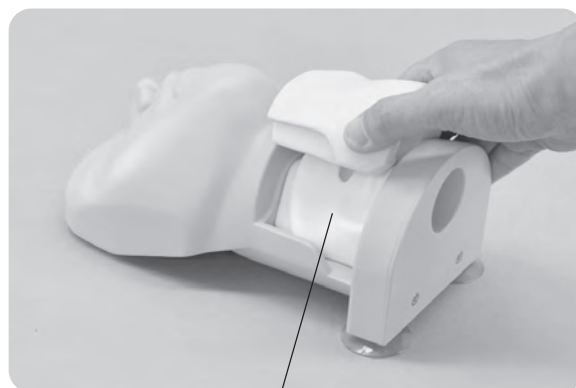
The skin for tracheostomy can be repetitively used by changing the position of incision. When there is no more area to incise, exchange the skin following procedures in page 3 of this manual.



Exchange of subcutaneous tissue

After detaching the skin, hold up both edges of subcutaneous tissue. Hold both edges of subcutaneous tissues to attach the new tissue.

※When the position of cricoid cartilage is not in right position, the subcutaneous tissue cannot be properly fixed.



Cricoid Cartilage

Storage

After training, detach the skin from the main body and store. If the skin is left attached to the main body, the tension of the skin will change which may affect the effectiveness of training.



Skin for tracheostomy



Caution

Do not mark on the model and other components with pen nor leave printed materials contacted on surface. Ink marks on the models cannot be removed.

Replacement part

Code number	part
11442-010	Skin for tracheostomy (set of 3)
11442-020	Subcutaneous tissue for tracheostomy (set of 3)



Skin for tracheostomy
(set of 3)



Subcutaneous tissue for
tracheostomy (set of 3)

For inquiries and service, please contact your distributor or KYOTO KAGAKU CO., LTD.

The contents of the instruction manual are subject to change without prior notice.

No part of this instruction manual may be reproduced or transmitted in any form without permission from the manufacturer.

Please contact manufacturer for extra copies of this manual which may contain important updates and revisions.

Please contact manufacturer with any discrepancies in this manual or product feedback. Your cooperation is greatly appreciated.

■ Main Office and Factories (World Wide)

 **KYOTO KAGAKU co.,LTD**

WEB•www.kyotogagaku.com

E-MAIL•rw-kyoto@kyotokagaku.co.jp

15 Kitanekeya-cho Fushimi-ku Kyoto 612-8388, Japan

TEL: +81-75-605-2510

FAX: +81-75-605-2519

■ Americas

 **KKAmerica**
Kyoto Kagaku America Inc.

WEB•www.kkamerica-inc.com

E-MAIL•info@kkamerica-inc.com

3109 Lomita Boulevard, Torrance, CA 90505-5108, USA

TEL: +1-310-325-8860

(Toll-free in North America: 877-648-8195)

FAX: +1-310-325-8867

2021/01