

MW74

Cesarean Section Unit

For realistic training in incision and suture of the uterus

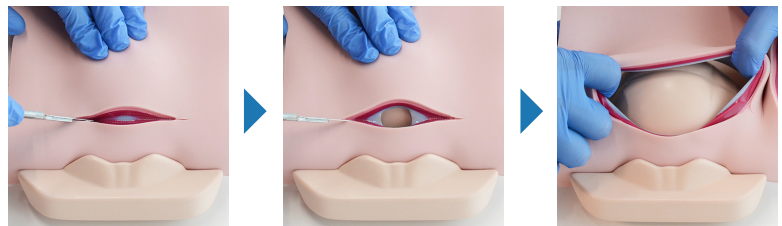
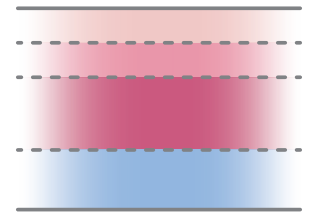
■Product Supervision

Dr.MAKI Jota, Assistant Professor, Department of Obstetrics and Gynecology, Graduate School of Biomedical Sciences, Okayama University



With a four-layer structure of varied textures

Lifelike, biomimetic feel

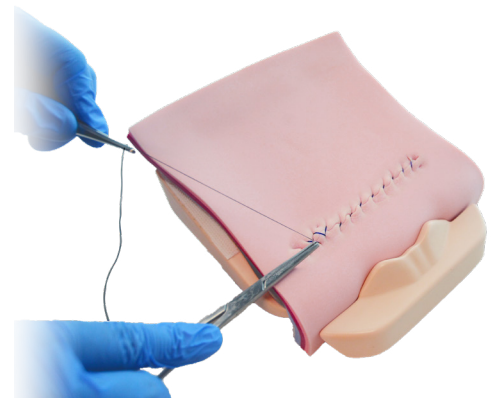


Features

- | Multiple layers of uterine wall developed in collaboration with active obstetricians
- | Realistic sensation of incision and suture
- | Fetal head and maternal pubic bone are simulated

Skills

- | Incision for Cesarean section
- | Closure of the uterus



 **KYOTO KAGAKU co.,LTD**

 <https://www.kyotokagaku.com/en>  rw-kyoto@kyotokagaku.co.jp

Europe, Russia & Africa

 **KYOTO KAGAKU EUROPE GmbH**

 <https://www.kyotokagaku.com/en>  rw-kyoto@kyotokagaku.co.jp

 All American regions
KYOTO KAGAKU AMERICA INC.

 <https://www.kyotokagaku.com/en>  info@kkamerica-inc.com

Worldwide Inquires and Ordering Head Office and Factories

15 Kitanechoya-cho, Fushimi-ku, Kyoto, 612-8388, Japan

 +81-75-605-2510

 +81-75-605-2519

De-Saint-Exupery-Str.10, 60549 Frankfurt, Germany

 +49-69-5060-28160

 +49-69-5060-28170

3109 Lomita Boulevard, Torrance, CA 90505-5108, USA

 +1-310-325-8860

 +1-310-325-8867