



Caution

Do not mark on the model and other components with pen nor leave printed materials contacted on surface.
Ink marks on the models cannot be removed.

MW81

OASIS Perineorrhaphy Simulator-4thdegree-

Instruction Manual

Contents

- Introduction P. 1, 2
Manufacturer's Note
- Before You Start P. 3
Set Includes
- Preparation P. 4
- After Training P. 5



English Site

Introduction

Thank you for purchasing the "MW81 OASIS Perineorrhaphy Simulator-4th degree-". This simulator allows you to train suturing of 4th degree of Obstetric Anal Sphincter Injuries (OASIS). It allows suturing and removal stitches.

Features

- Faithful reproduction of anatomy
- Reproduction of realistic tactile sensations
- Sutures and removal stitches can be performed
- Training can be done on a tabletop or on a simulator sold separately

PLEASE READ

Always follow the handling and storage instruction below, to keep the material with its elasticity and durability.

○ **Do not let the parts contact with other resin items and printed materials.**

These soft material of the parts may be deformed by contact with other resin items and marked by contact with printed material and they cannot be repaired.

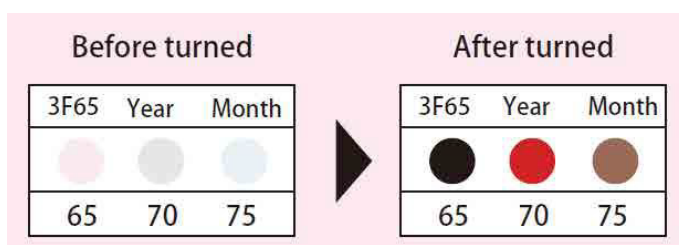
○ **Maintain proper temperature, humidity and avoid direct sunlight of the storage room of simulators.**

Be sure to monitor the indication sticker on the storage box of the product.

Store the simulator below 60 degrees C.

Change the storage place immediately when the temperature indicator shows color circles as below.

※The color circles are irreversible.





Dos and Don'ts

Indicates a potential risk of injury to the user or damage to property if the product is mishandled.

● **Do not place any printed material on surface of manikin**

Prevent any other printed material from touching the surface of model.

● **Do not to drop from a high place**

If the product is dropped from a high place, it may be damaged.

● **Store in the supplied non-woven bag**

When storing the genitalia skins, please use the supplied non-woven bag. Storing in other vinyl or paper bags may cause oil from the product to seep out.

● **Remove the external anal sphincter after use**

Do not store the genitalia skins with the external anal sphincter attached. The skins may become deformed, so please store it back in the bag provided.

● **Remove the stitches right after use**

Please remove the stitches after use before storing the product as storing it without removing the stitches may cause deformation or wrinkles.

● **Store in a cool, dry place**

Prevent model from heat, humidity, and direct sunlight when storing after use. This is to prevent material change and damage.

Set Includes

Before you start, ensure that you have all components listed below.



- | | |
|----------------------------|---|
| a. supporting holder | 1 |
| b. genitalia skin | 1 |
| c. external anal sphincter | 1 |
| d. Fixing clamp | 1 |
| e. talcum powder | 1 |
| instruction manual | 1 |

Preparation

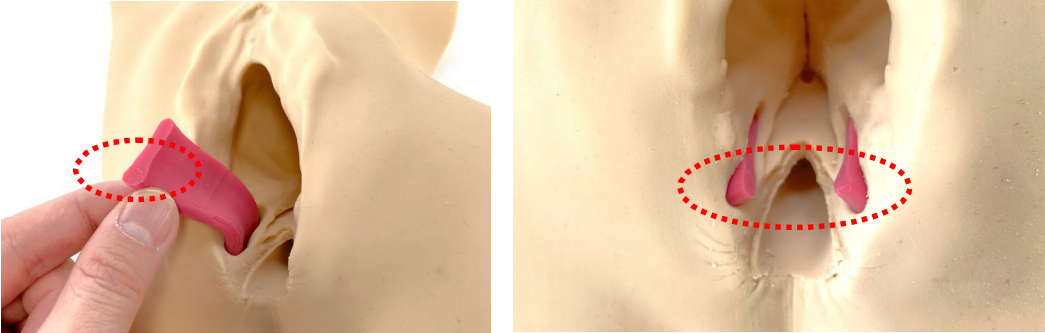
Preparation

Preparation

Preparation of the OASIS Perineorrhaphy Simulator-4thdegree-

① Pass the external anal sphincter through the hole in the genitalia skin.

*Be careful that the thicker part of the external anal sphincter is on the anal side.



② Fasten the velcro on the supporting holder and the velcro on the genitalia skin.



③ For Tabletop Use

Attach the clamps to the magnets on the back of the pedestal and fix the clamps to the tabletop.



※When attaching to MW65 Advanced Obstetric and Birthing Simulator

Remove the uterus unit and tailbone parts of MW65, and attach the base of this simulator to MW65.

Finishing Up and Storage

- ① Remove the external anal sphincter from the genitalia skin.



Consumables



1 Genitalia skin (OASIS -4th degree-) for MW81
*included the external anal sphincter
11485-010

For inquiries and service, please contact your distributor or KYOTO KAGAKU CO., LTD.

■ Worldwide Inquiries and Orders

Kyoto Kagaku Head Office and Factories: TEL :

+81-75-605-2510 FAX : +81-75-605-2519

15 Kitanechoya-cho, Fushimi-ku, Kyoto, 612-8388, JAPAN

■ USA, Canada, and South America

Kyoto Kagaku America Inc.

TEL : 1-310-325-8860 FAX : 1-310-325-8867 3109

Lomita Boulevard, Torrance, CA 90505-5108, USA

■ Europe, Russia & Africa

Kyoto Kagaku Europe GmbH.

TEL : +49-69-5060-28160

De-Saint-Exupery-Str.10, 60549 Frankfurt, Germany

■ KYOTO KAGAKU co.,LTD

URL: <http://www.kyotokagaku.com> e-mail: rw-kyoto@kyotokagaku.co.jp

The contents of the instruction manual are subject to change without prior notice
No part of this instruction manual may be reproduced or transmitted in any form without permission from the manufacturer.
Please contact manufacturer for extra copies of this manual which may contain important updates and revisions.
Please contact manufacturer with any discrepancies, typos, or mistakes in this manual or product feedback. Your cooperation is greatly appreciated.