



Caution

Do not mark on the product and its components with pen nor leave printed materials contacted on surface.
Ink marks on the models cannot be removed.

PH-19

Rotation Stomach Phantom TMP-R

Instruction Manual

Contents

● Introduction	P.1-2
● Stomach Phantom	P.3
● Rotation System	P.4
● Important Safety Notice	P.5



Introduction

Manufacturer's Note

PH-19 Rotation Stomach Phantom TMP-R is a phantom for training of healthcare professionals to simulate double contrast gastrography.

Any other use, or any use not in accordance with the enclosed instructions, is strongly discouraged. The manufacturer assumes no responsibility for any accident or damage resulting from such use.

Should you have any questions on this product, please feel free to contact our distributor in your area or KYOTO KAGAKU at any time. (Our contact address is on the back cover of this manual)

■ Features

1. Rotation system to simulate the movement of patient.
2. Life-size distended stomach with lesions modeled from real specimens: early cancer and gastric ulcer.
3. Barium can be poured in the stomach for imaging.
4. Pathology includes early cancer and gastric ulcer.
5. Double contrast gastrography can be trained.

■ Preparations before start

Unscrew the cap at the top of the stomach phantom and pour about 70 ml of barium solution.

After tightening the two caps on the phantom, pick up the phantom and shake it up and down to cover the inner wall with the barium solution. Once the inner wall is evenly covered with the barium solution, concentrate the barium solution on the bottom of the stomach and place it on the patient table, which is to be set horizontally.

■ After use

Discharge the barium solution immediately after finishing the session and rinse the inside of the phantom with running water. After wiping off the water on the surface, screw on the lid and store it.

■ Dos and Don'ts

This phantom may be broken if dropped since it is made of hard epoxy resin, so please handle it carefully. Use neutral detergent to clean the dirt on the surface. Do not use solvent-based detergents since it may damage the material. After use, store in the storage box.

■ Materials

Urethane based resin / epoxy resin

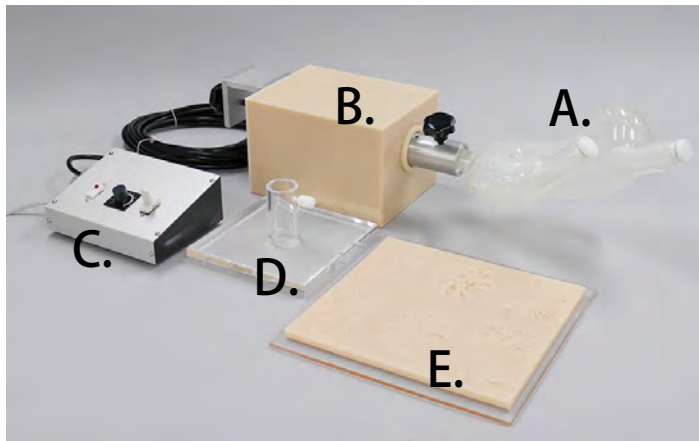
*Due to the properties of the materials and production process, small bubbles might sometimes be seen in the wall of the phantom, which is normal and does not affect performance of the phantom.

■ Phantom size

Size: W25 x D18 x H28 cm / W9.8 x D7.1 x H11 in

Weight: Approx. 2Kg

■ Set includes



- A. stomach phantom 1
- B. rotation unit 1
- C. controller 1
- D. phantom holder 1
- E. model of lesions 1
- F. storage case (no photo)

Stomach phantom: Simulates a distended state with simulated lesions on its wall.

Model of lesions: Sample of seven lesions replicated from real specimens.

■ Simulated lesions located on inner wall of the phantom

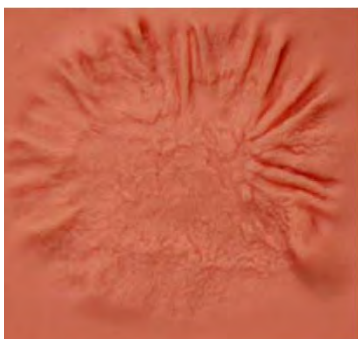
Anterior gastric lining
Posterior → Anterior

Posterior gastric lining
Anterior → Posterior

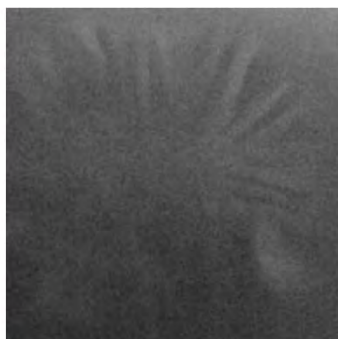


The following three images show the simulated lesions marked in the red circle in the image above.

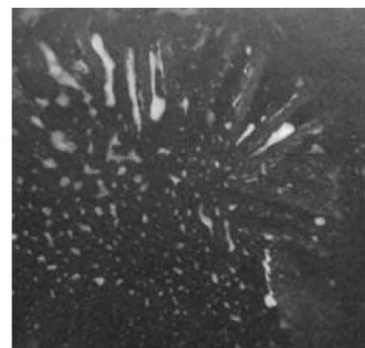
Model of lesions



Radiograph

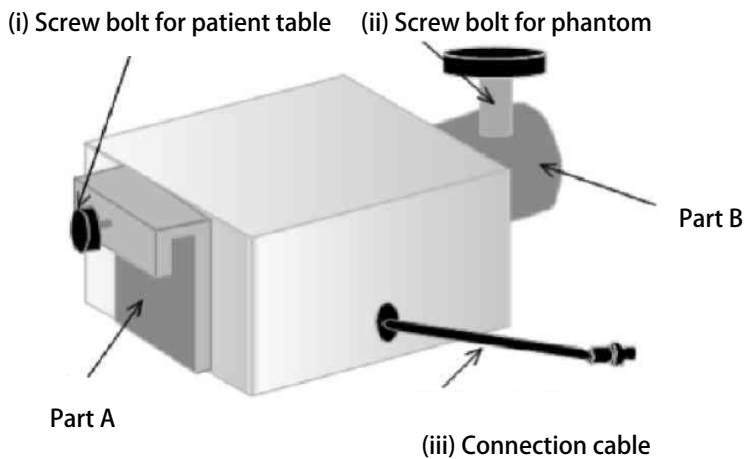


Radiograph with Barium



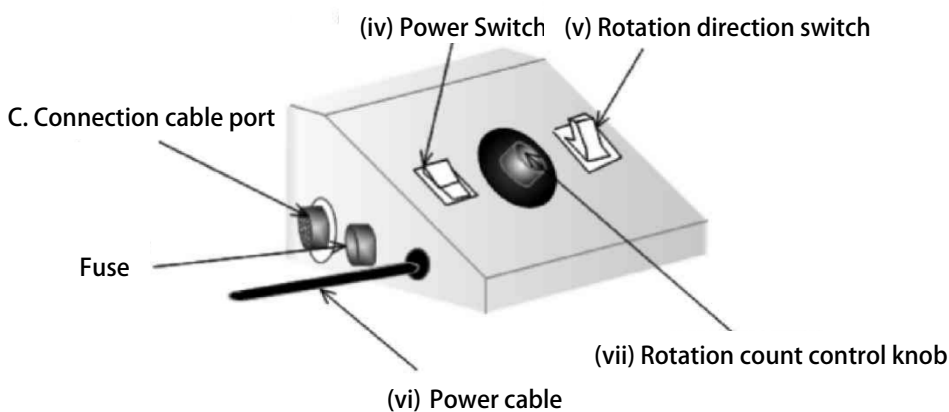
■ Set the rotation system on the patient table

With this rotation system, the stomach phantom can be set on the foot panel of the patient table. The rotation and the direction can be adjusted by the controller.



1. Loosen (i) Screw bolt for patient table, set Part A to foot panel of the patient table and tighten the screw.
2. Loosen the (ii) Screw bolt for phantom, insert the supporting pole of the stomach phantom into the Part B and tighten screw.
3. Connect the (iii) Connection cable to the controller.

■ Connection and function of the controller



1. Plug the (iii) Connection cable from the rotation unit into the C. Connection cable port on the controller.
2. Connect the (vi) Power cable to an outlet.
3. Turn on the (iv) Power switch.

Use the (vii) Rotation count control knob to change rate of rotations.

*The range of the rotation: 10 times/minute to 3 times/minute.

Use the (v) Rotation direction switch to change the rotation direction.

The rules below represent are strongly recommended usage for safety.



Warning

Failure to observe the specified instructions may lead to imminent danger, as electric shock, burns, and serious injury. Be sure to observe these instructions ensure safe operation.



Electricity Hazard



Fire hazard

- **Use only the AC adapter and power cord provided**

Use of an adapter which does not come with the product may lead to fire hazard or electric shock. Use with AC100V-240V power supply. Do not use the provided AC adapter with other products.



- **Do not wet or damage the power cord**

DO NOT:

- forcefully bend the power cord
- place heavy objects on top of the power cord
- have the power cord come in contact with liquid.
- handle the cord whilst hands are wet



- **Unplug the power cord when the phantom is not in use.**

This will prevent electrocution or fire hazard that may cause burns and damages.



- **Ensure power plug is fully inserted**

Ensure that dust on the power plug is regularly removed, and that the plug is fully inserted.

- **Do not attempt to take apart or remodel the product.**

In the instance that the product is not functioning, do not attempt to take apart or remodel the product. Please contact the distributor or Kyoto Kagaku directly.



- **Keep flammable materials away from the product.**

Such materials can lead to fire hazard and damages to the product and/or environment.



If the product is not functioning

Turn off the device and unplug from the power source.

If smoke, odor or other abnormalities are detected, promptly follow the instructions above and contact the distributor or Kyoto Kagaku directly.

For inquiries and service, please contact the distributor or KYOTO KAGAKU CO., LTD.

■ **Main Office and Factory** (World Wide)

 **KYOTO KAGAKU** co.,LTD

WEB • www.kyotokagaku.com **E-MAIL** • rw-kyoto@kyotokagaku.co.jp

15 kitanechoya-cho Fushimi-ku Kyoto 612-8388, Japan
TEL: +81-75-605-2510 FAX: +81-75-605-2519



■ **Europe, Russia & Africa**

 **KYOTO KAGAKU** Europe GmbH

WEB • www.kyotokagaku.com
E-MAIL • rw-kyoto@kyotokagaku.co.jp

De-Saint-Exupery-Str.10, 60549 Frankfurt, Germany
TEL: +49-69-5060-28160

■ **North and South American regions:**

 **KKAmerica**
Kyoto Kagaku America Inc.

WEB • www.kkamerica-inc.com
E-MAIL • info@kkamerica-inc.com

3109 Lomita Boulevard, Torrance, CA 90505-5108, USA
TEL: +1-310-325-8860 FAX: +1-310-325-8867
(Toll-free in North America: 877-648-8195)