

Caution:
Please make sure this instruction manual and other printed matters do not directly touch the surface of the phantom. The resin surface will absorb the ink which cannot be cleaned off.

Pediatric chest phantom



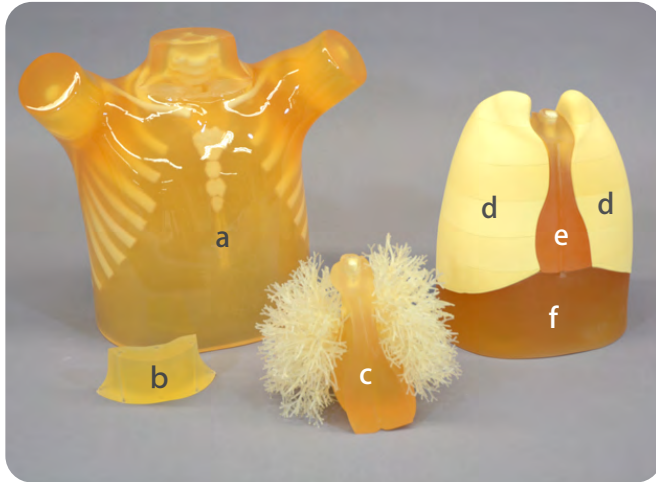
Table of Contents

- Before use
Included parts, Cautions P.1
- Preparation
Installation of chest parts P.2~P.4



Set includes

Before first use, please ensure all components listed below are included in the unit.



a. Phantom body	1
b. Thyroid gland	1
c. Lung vesculature insert (heart with pulmonary vessels)	1
d. Lung density insert (lung field units)	1
e. Heart	1
f. Diaphragm block	1

※ ϕ 4.3 , ϕ 13 mm

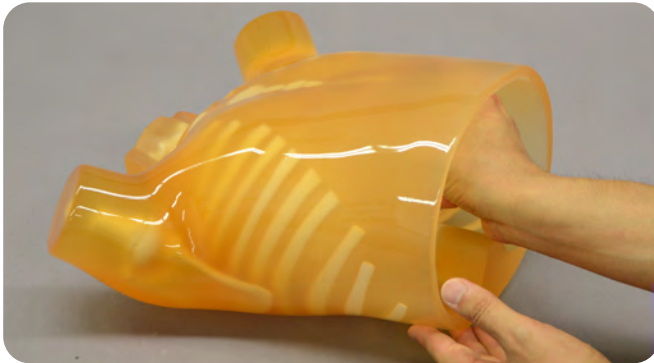
Caution

- Handle with care.
To avoid damage to the product and harm to the people and/or objects around it, please be sure not to drop the phantom or give it strong shocks. The phantom is heavy and breakable.
- Use water or neutral detergent to wipe the phantom.
To clean the phantom surface, wipe it with water or neutral detergent. Do NOT use organic solvent such as thinner.
- Please do NOT put printed matter on the surface of the model.
Please make sure printed matters do not touch directly to the surface of the phantom.
- Please do NOT write on the product by ball-point or fiber-tipped pen.
If you write on the phantom by ball-point or fiber-tipped pen, the ink will be absorbed in the phantom and cannot be cleaned off.
- Please avoid climate of high temperature and high humidity.
Please avoid storage in climate of high temperature and high humidity, or put the product in the direct sunshine because they can cause deformation or breakdown.
- The color of the surface can be changed
In case the phantom are not used for long periods of time, or as a result of aging, the color of the surface can be changed. However, it has no problem in practical use.
- Be sure to secure the inserted parts in lifting and carrying the phantom.
Please take care not to drop inserted parts of the phantom as heart with capillary, lung field, and diaphragm are inserted from the bottom of the phantom to chest walls.

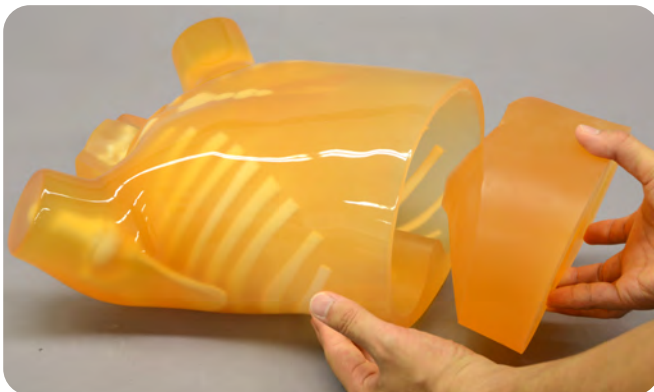
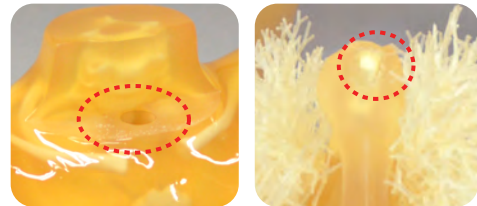
1 Installation of lung vasculature insert



1. Lay the phantom on the back. Insert heart with pulmonary vessels to the inside along the slide guide. (convex guide)



2. Insert heart deeply until its top reaches to the neck of the phantom. Adjust its angle so that the projection at the tip of heart fit the hole in the neck. Peeping through the neck hole to check the angle while advancing the insert helps smooth insertion.



3. Insert diaphragm block inside the body. Take note the direction so that the slid guides at its back fit together.



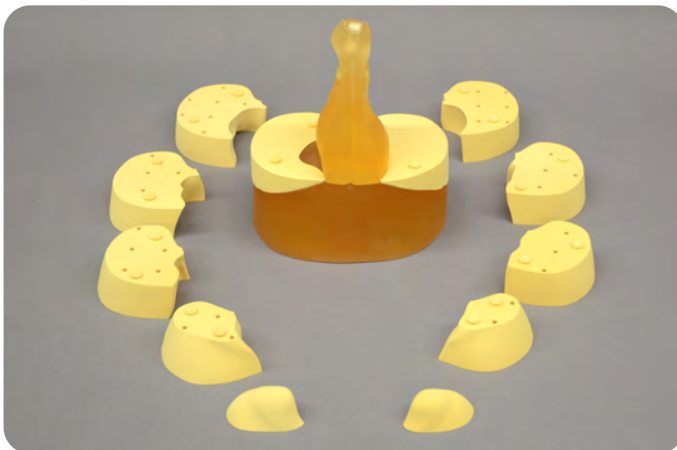
4. Insert the diaphragm block until the bottom of the block and the edge of the phantom body come to the same plane without a step.



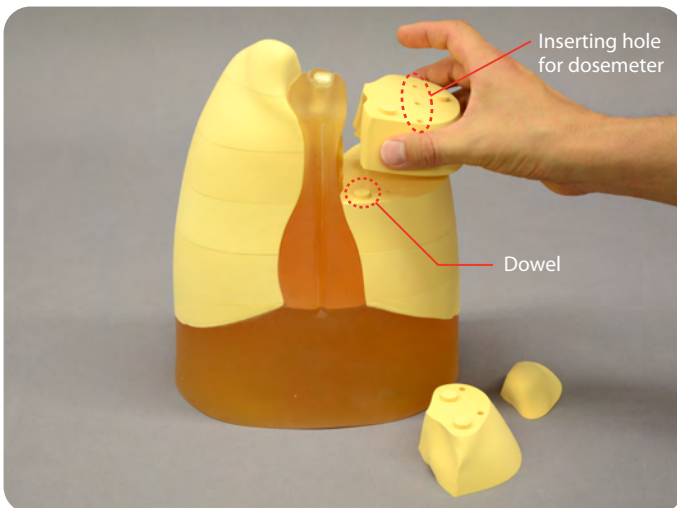
5. To remove the heart with palmonary vessels, take opposite steps describe above carefully.

2 Assembly and installation of lung field units

1. First, set heart parts on diaphragm unit.



2. Then assemble the lung field units.
Lung field consists of 6 laminated parts both in left and right part.
Dosemeter can be put in the inserting hole of laminated parts.



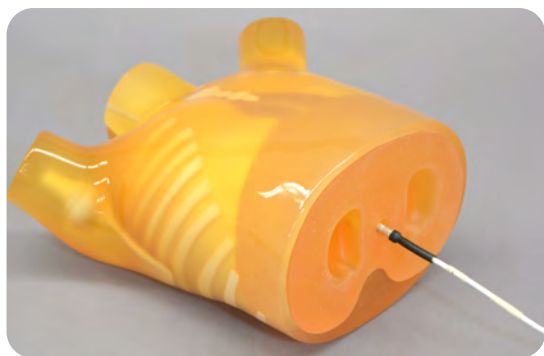
3. Laminate the lung field by putting the uneven parts (circle) together.

2 Assembly and installation of lung field units

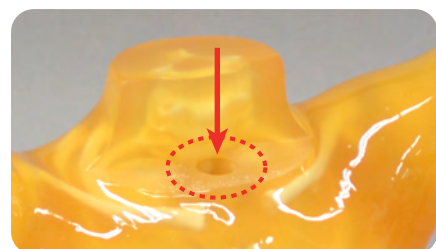
4. In upright position, cover the assembled insert with the phantom body.



5. Both for lung vesiculature and lung density inserts lon chamber can be inserted to the opening at the the bottom of diaphragm.



6. Please take opposite step described above in detaching the lung field. In case the phantom is demounted in the upper side, it becomes easier to detach by pushing downward the projection at the tip of heart from the hole in the neck.





Caution

Please make sure this instruction manual and other printed matters do not directly touch the surface of the phantom. The resin surface will absorb the ink which cannot be cleaned off.

KYOTO KAGAKU co.,LTD

<http://www.kyotokagaku.com> e-mail: rw-kyoto@kyotokagaku.co.jp

■ Main Office and Factory

15 Kitanechoya-cho Fushimi-ku Kyoto 612-8388, Japan

Telephone : 81-75-605-2510

Facsimile : 81-75-605-2519

■ KyotoKagaku America Inc.

USA,Canada,and South America

3109 Lomita Boulevard, Torrance, CA 90505 ,USA

Telephone : 1-310-325-8860

Facsimile : 1-310-325-8867