

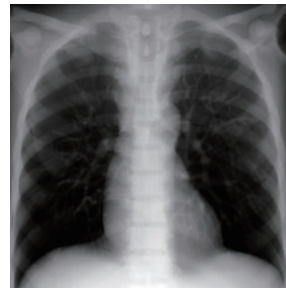
PH-2 | 41350-000

# Whole Body Phantom "PBU-50"



An essential asset for every radiography program

ANTHROPOMORPHIC PHANTOMS



## FEATURES

- | Radiology absorption and HU number approximate to human body.
- | Main joints have close-to-human articulation
- | Phantom can be disassembled into 10 individual parts

## APPLICATIONS

- | Plain X-ray
- | Basic patient positioning
- | Basic CT

## ANATOMY

skull / spine / clavicles / scapulae / ribs / sternum / coxal bones / lungs with pulmonary vessels / trachea (up to primary bronchi) / heart / liver with portal and hepatic veins / kidneys / humerus / antebrachial bone / bones of hand / femur / patella / lower leg bone / bones of foot

### Position of Hands and feet

- left foot : plantar flexion
- right foot : dorsiflexion
- left hand : aligned fingers
- right hand : spread fingers

## DESCRIPTIONS

### SET INCLUDES

- 1 whole body phantom
- 1 flat head screwdriver
- 1 hand-fixture belt

### SPECIFICATIONS

Phantom height:	165 cm	Packing size:	W92×D57×H38 cm / W36×D22×H15 in
	65 in		W90×D63×H22 cm / W35×D25×H8.7 in
Phantom weight:	50 kg / 110 lb		W89×D57×H16 cm / W35×D22×H6.3 in
		Packing weight:	80 kg / 176 lb

### MATERIALS

Soft tissue: urethane based resin (density: 1.06)  
 Synthetic bone: epoxy resin (density: 1.31)  
 Skull: epoxy resin (density: 1.11)  
 \*Phantom has no metal parts or liquid structure

### OPTIONAL PARTS

- 41363-070 storage cases (consist of 2 boxes)
- 41350-200-16 body plates for PH-2/2B (BMI 32)
- 41350-200-17 body plates for PH-2/2B (BMI 40)

### PUBLICATION REFERENCES

P. Kaewpookum, M. Kraekratoke, C. Thirinthong,a J. Yasamud, T. Siriwiladluk, P. Sisot, P. Khayaiwonga, The Evaluation of the Correlation between Radiographic Exposure Technique and Entrance Surface Air Kerma using Exposure Index from Computed Radiography Ramkhamhaeng International Journal of Science and Technology (2020) 3(2): 24-30

Storage case P.31 ▶

