

# PH-74 Bone Scintigraphy Quality Assurance Phantom

## ISMM Type (SIM<sup>2</sup> bone Phantom)

Instruction  
Manual

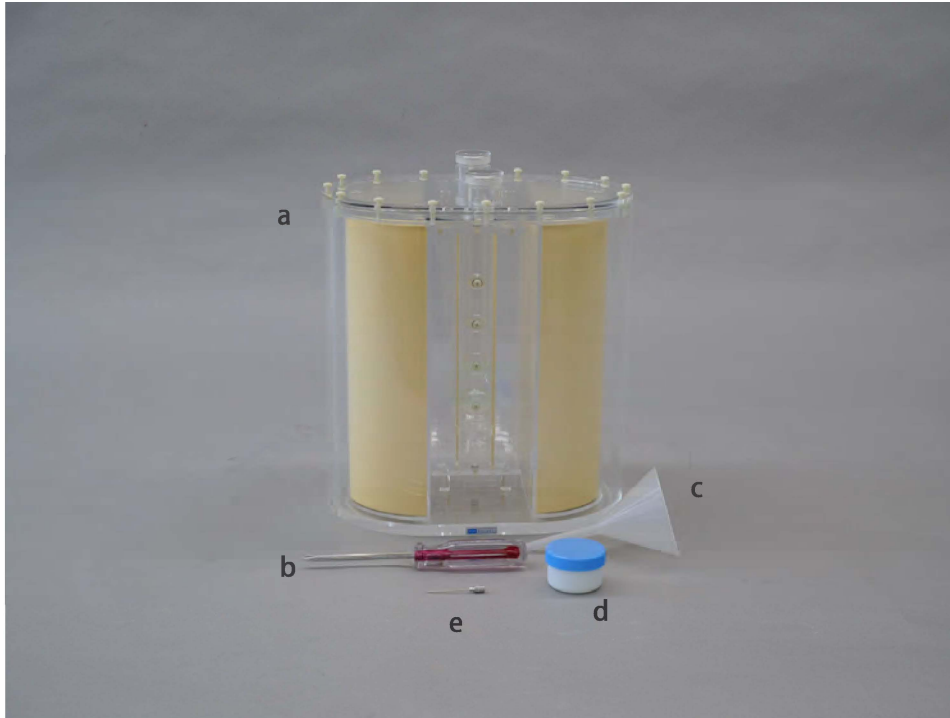
### Contents

- Before you start
  - Product contents and precautions . . . . . P.1
  - Specifications . . . . . P.2
- Preparation
  - How to set up . . . . . P.3 - 7



## Product contents

Before your first use, ensure that your product includes all the components listed below.



a Phantom body (Including left and right lung fields and bones)	1	d Petroleum jelly	1
b Screw driver	1	e Needle	1
c Funnel	1	Instruction manual	

### Warning

- Please handle with care. The phantom is made of hard resinous material; the phantom can be damaged if dropped or hit by a hard object.

- Please clean the phantom with water or pH neutral detergent. Please do not use organic detergent such as thinner.

- Please do not store in high temperatures, high humidity or in direct sunlight. It may lead to deformation or damages.

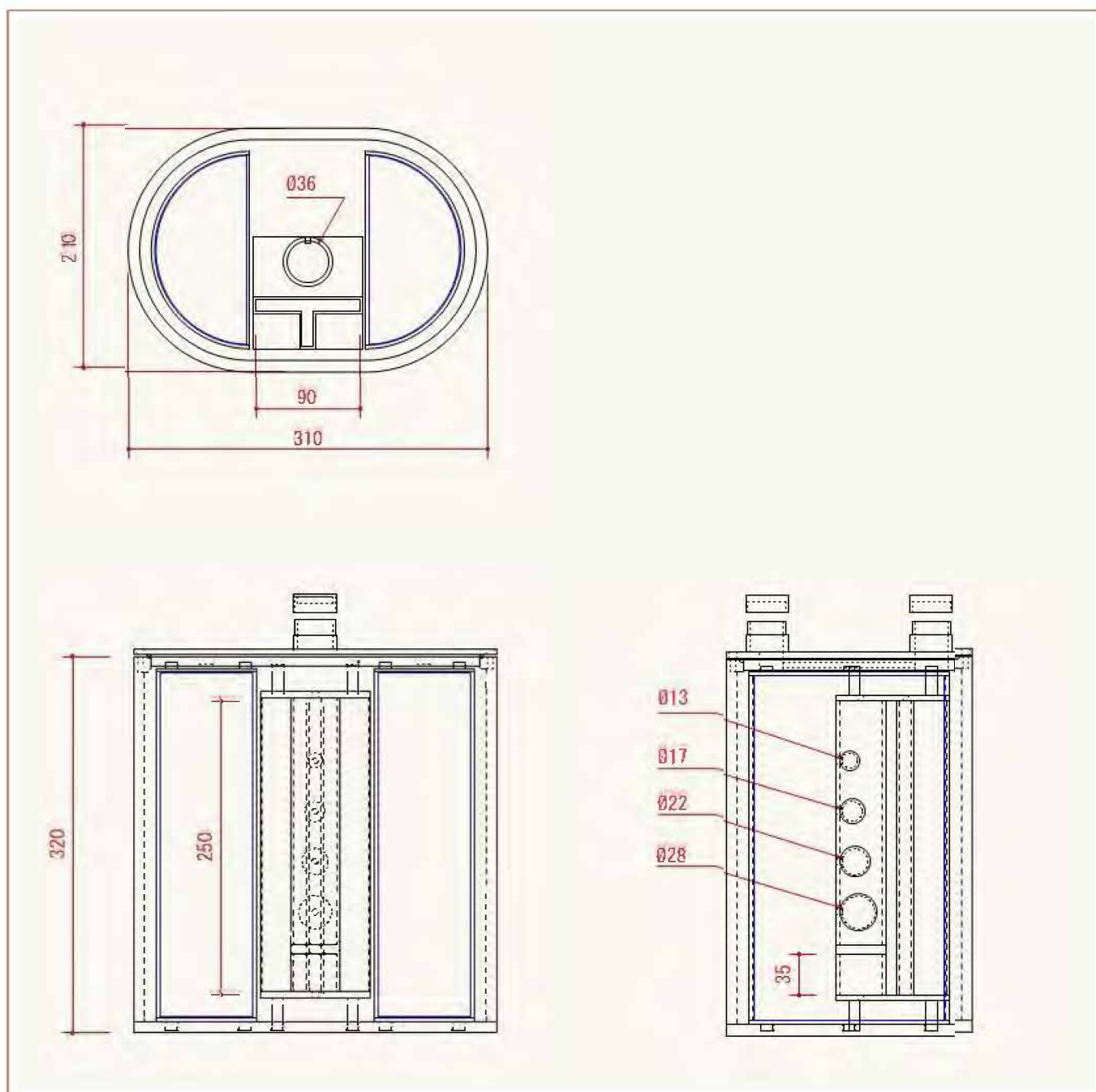
- Please do not write with a pen. Writing directly on the phantom with felt-tip pen or permanent marker will not wash off.

## Phantom's specs ( External dimensions, material )

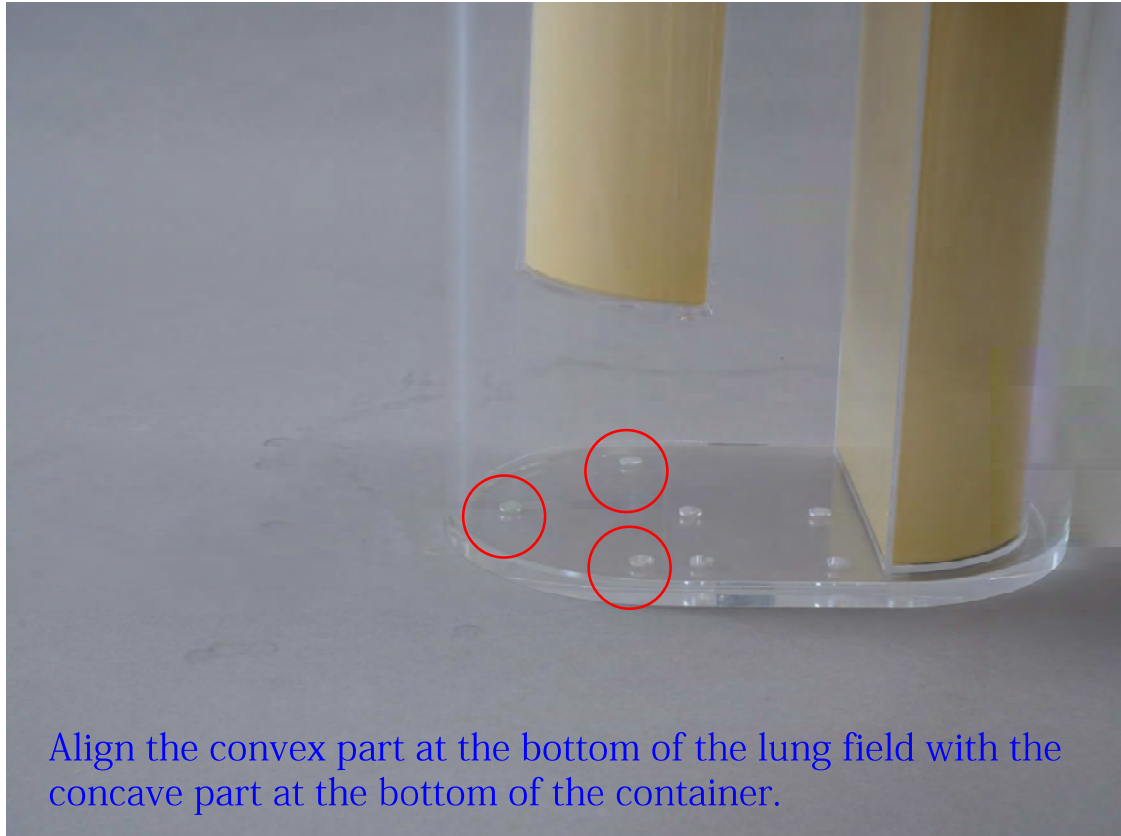
W310×D210×H355 mm (Including protrusions)

Outer container/vertebral body: Acrylic resin

Inner lung field: tough lung (PVA acetal product)

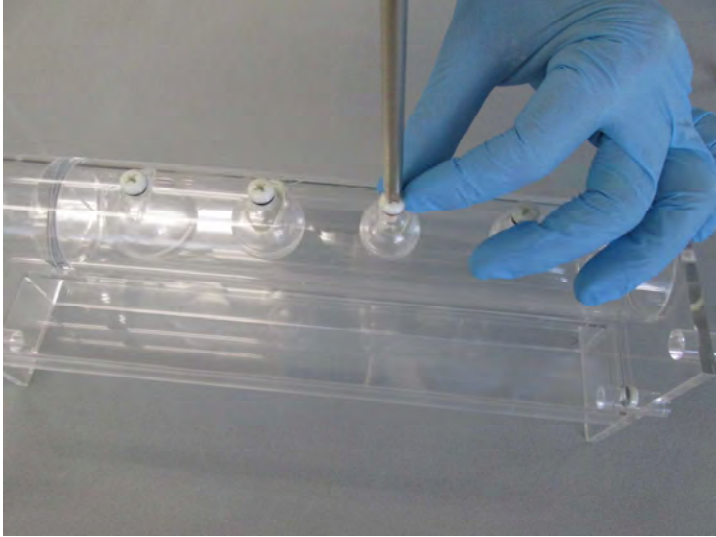


## Detachment of the lung field

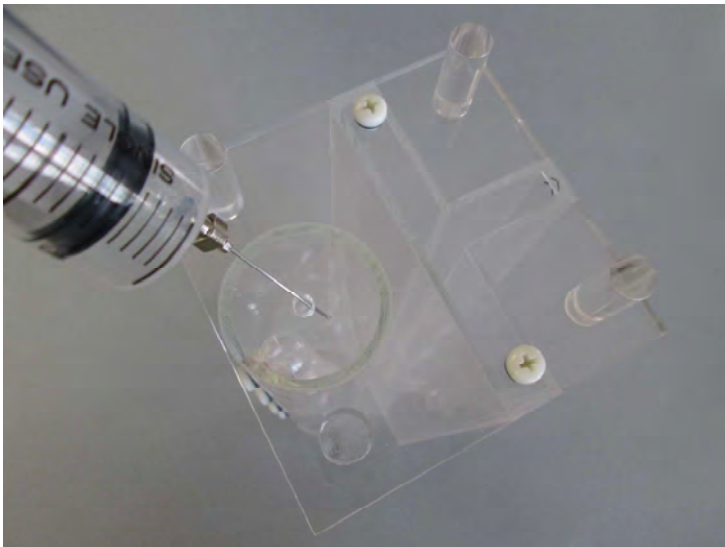


※It can be used as a chest if the lung field is attached, and as an abdomen if it is removed.

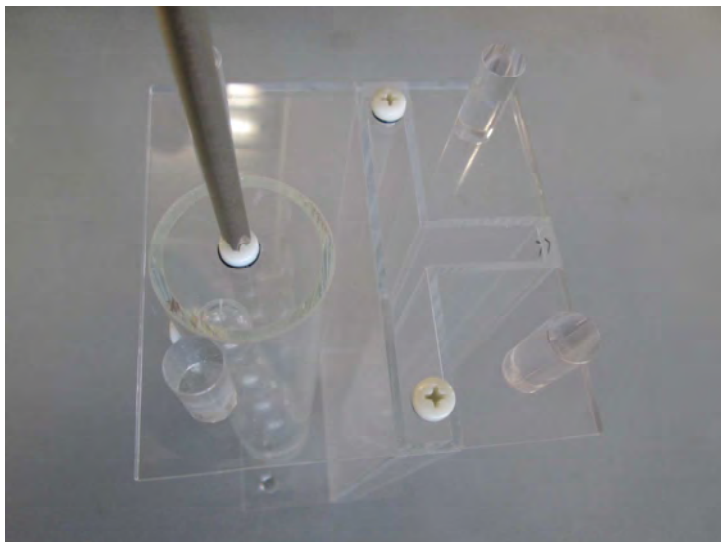
## Assembling the spine



Before the injection of the solution into the spinal column cylinder, fasten the screws on the sphere shaped targets.

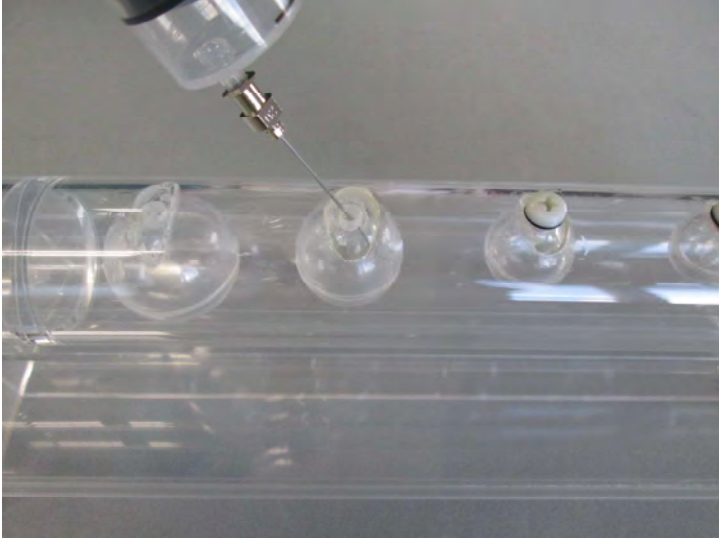


Inject the solution into the spinal column cylinder.



Close the injection port on the cylinder with a screw.

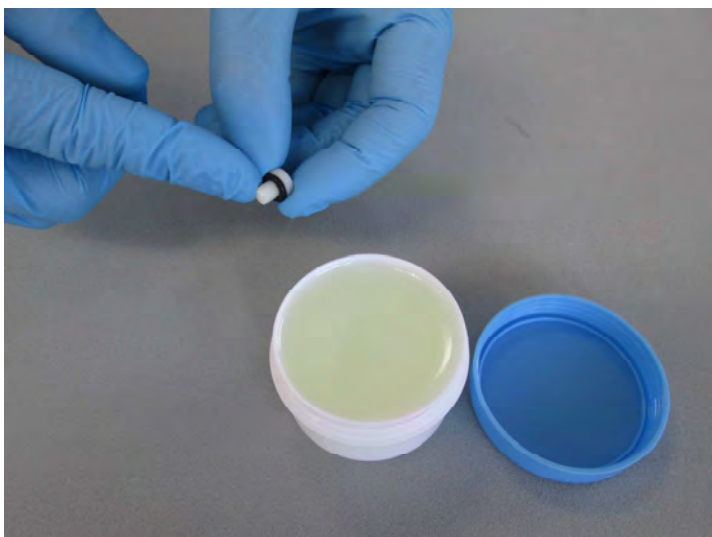
## Assembling the spine



Place the spinal column cylinder steadily so that side with injection ports on the sphere shaped targets face up. The sphere shaped targets line up in short intervals in the spinal column cylinder. Loosen the screws and inject the solution into the targets.

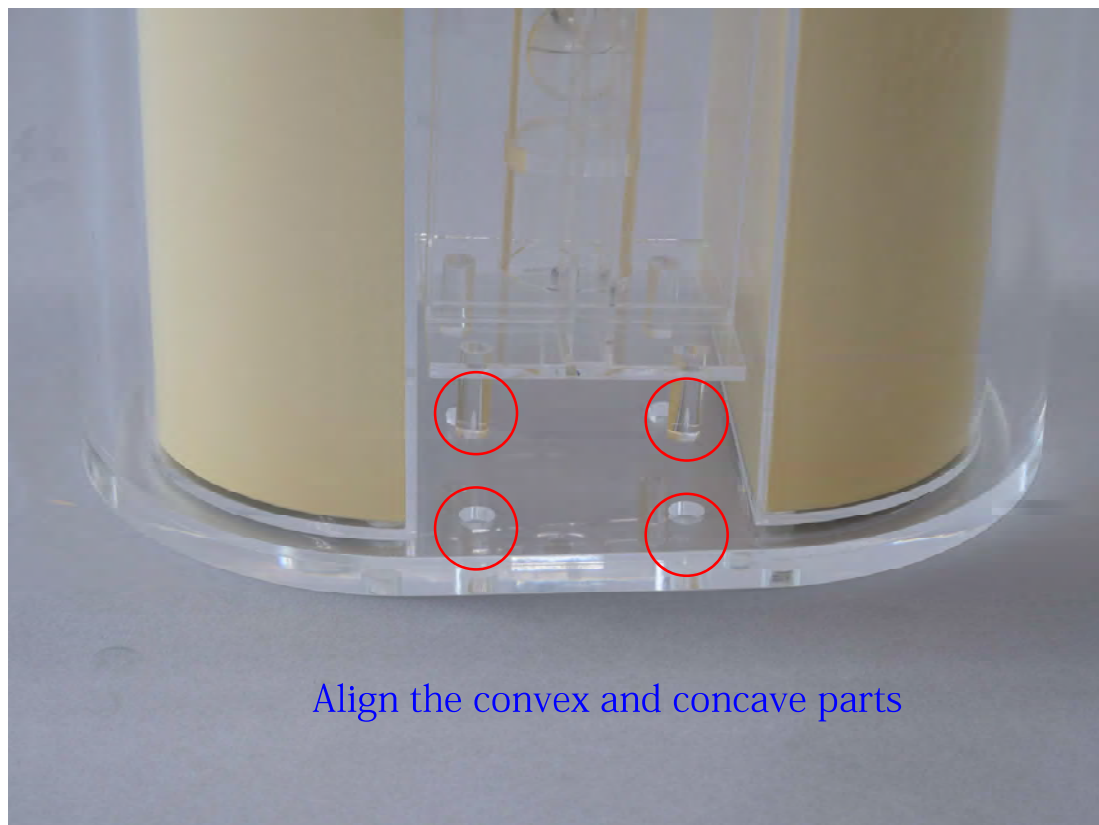


Close each port firmly with the screw after filling the solution.



Use petroleum jelly on the screws to avoid leaking.

## Assembling the spine



## Lid installation



# Si m<sup>2</sup> Bone Phantom Volume measurement record

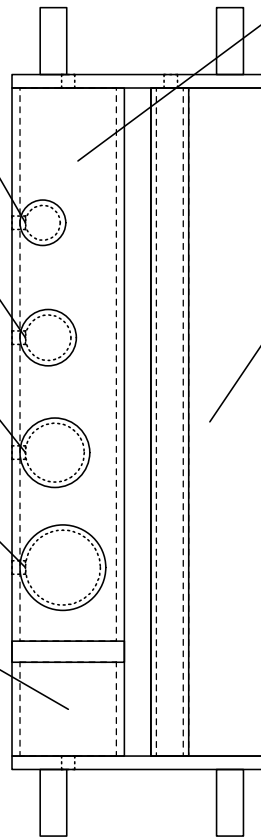
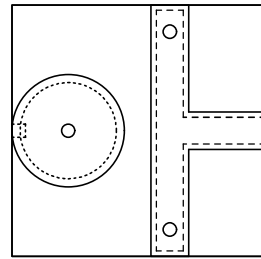
$\phi 13\text{mm} : 1.1\text{ml}$   
Measured value ( ) ml

$\phi 17\text{mm} : 2.6\text{ml}$   
Measured value ( ) ml

$\phi 22\text{mm} : 5.6\text{ml}$   
Measured value ( ) ml

$\phi 28\text{mm} : 11.5\text{ml}$   
Measured value ( ) ml

$\phi 36 \times H35\text{mm} : 35.6\text{ml}$   
Measured value ( ) ml



$\phi 36 \times H207\text{mm} : 190\text{ml}$   
Measure value ( ) ml

$W90 \times D40 \times H250\text{mm} : 300\text{ml}$   
Measured value ( ) ml

**Trunk**  
Measured value with lung field and vertebral body ( )ml  
Measured value with lung field and vertebral body ( )ml



**KYOTO KAGAKU co.,LTD**

URL : <http://www.kyotokagaku.com>  
e-mail : [rw-kyoto@kyotokagaku.co.jp](mailto:rw-kyoto@kyotokagaku.co.jp)

---

**Worldwide Inquiries & Ordering**

**Kyotokagaku Head Office and Factories:**

15 Kitanechoya-cho, Fushimi-ku, Kyoto, 612-8388, JAPAN

Tel: +81-75-605-2510 Fax: +81-75-605-2519

**Kyotokagaku USA Office: USA and Canada sales and services**

3109 Lomita Boulevard, Torrance, CA 90505-5108, USA

Tel: 1-310-325-8860 Fax: 1-310-325-8867