

PH-77 | 41943-000

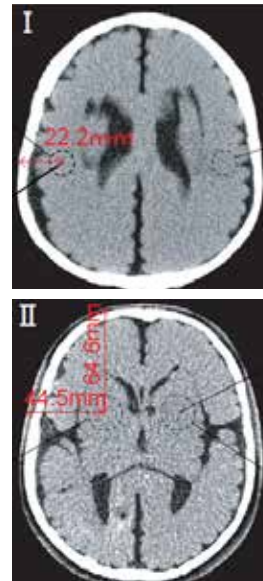
CT Stroke Head Phantom KH



Study and training for early detection of acute cerebral stroke



Product supervision: Hidetake Hara
Department of Radiology,
School of Allied Health Sciences, Kitasato University



SHOW MORE!



FEATURES

- | Sphere shaped simulated lesions (acute stroke) are embedded in the brain.
- | The phantom support study and training in visualizing low-contrast lesions in low energy range

APPLICATIONS

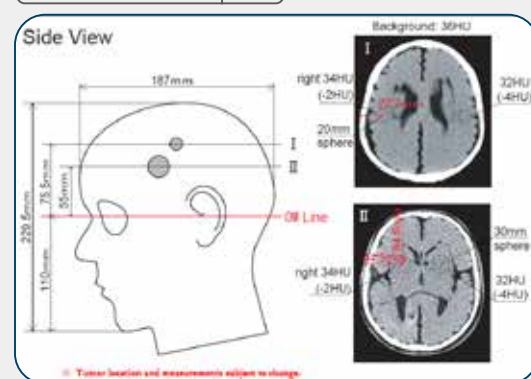
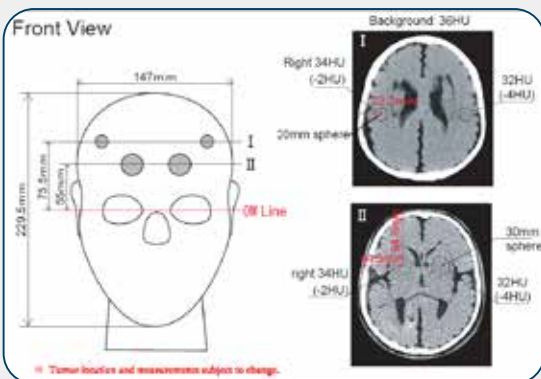
- | CT

ANATOMY and PAHOLOGY

- | Anatomy
- | A synthetic skull
- | Soft tissue
- | Brain
- | Pathology
- | Acute stroke (20mm dia. x2, 30mm dia x 2)

IHU (at 60keV)

Soft tissue	0	Cerebellum	36
Cerebrum	36	Cerebral ventricles	10
Mesencephalon	36	Eye balls	20
simulated lesions (acute stroke)	32		
	34		



DESCRIPTIONS

SET INCLUDES

- 1 head phantom
- 1 set of sample X-ray data (DVD)
- 1 storage case manual

SPECIFICATIONS

Phantom height: 33 cm / 13 in
Phantom weight: 5.25 kg / 11.57 lb
Packing size: W46×D31×H32 cm / W18.1×D12.2×H12.6 in

MATERIALS

Soft tissue: urethane based resin (density 1.06)
Skull: urethane based resin (density 1.11)
Cervical vertebrae (C1-C7): epoxy resin (density 1.31)