



Caution

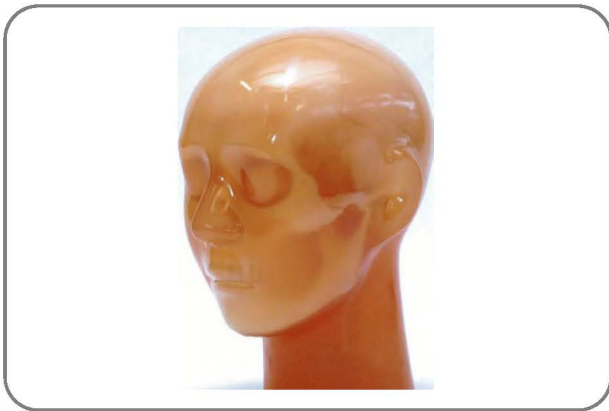
Don't mark on the phantom with a pen or leave printed materials on its surface. Ink marks on the phantom will be irremovable.

PH-77

CT Stroke Head Phantom

Product supervision:

Kitasato University, School of Applied Health Sciences,
Radiological Technology,
Hara Hidetake



- General information
 - Dos and Don'ts P.1
 - Set includes P.2
- Phantom specifications P.3-P.4

General Information

This phantom was made with the purpose of training taking CT images of acute cerebral infarction with the correct settings.

Important:

Do not use this phantom for any purpose other than the one stated above. The manufacturer is not responsible for any damages resulting from usage not mentioned in this manual.

Features:

Inside the phantom are targets with a size of 20 mm and 30 mm in diameter representing a cerebral infarction.

As the materials used for the brain and eyeballs possess an absorption rate equivalent to those of an actual human, a realistic CT image of the brain, ventricles and eyeballs can be taken.

Skeletal structures are made from artificial bone (cancellous bones are not included).

 **DOs and DON'Ts**

DOs

Handle with care

The materials for phantom and models are special composition of polyurethan resin. Please handle with care at all times.

Cleaning and care

Please clean the phantom completely every time after you finish the training.

Keep the training set at room temperature, away from heat, moisture and direct sunlight.

DON'Ts

Never wipe the phantom or models with thinner or organic solvent.

Don't mark on the phantom with pen or leave printed materials contacted on their surface.

Ink marks on the models will be irremovable.

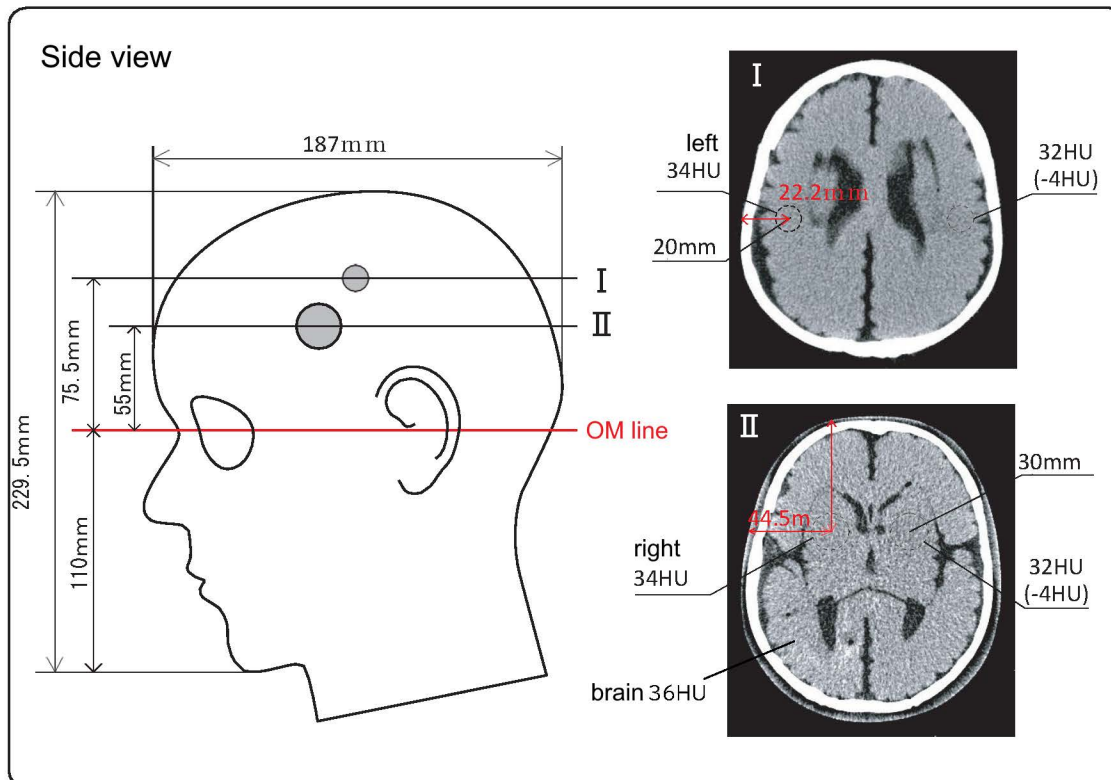
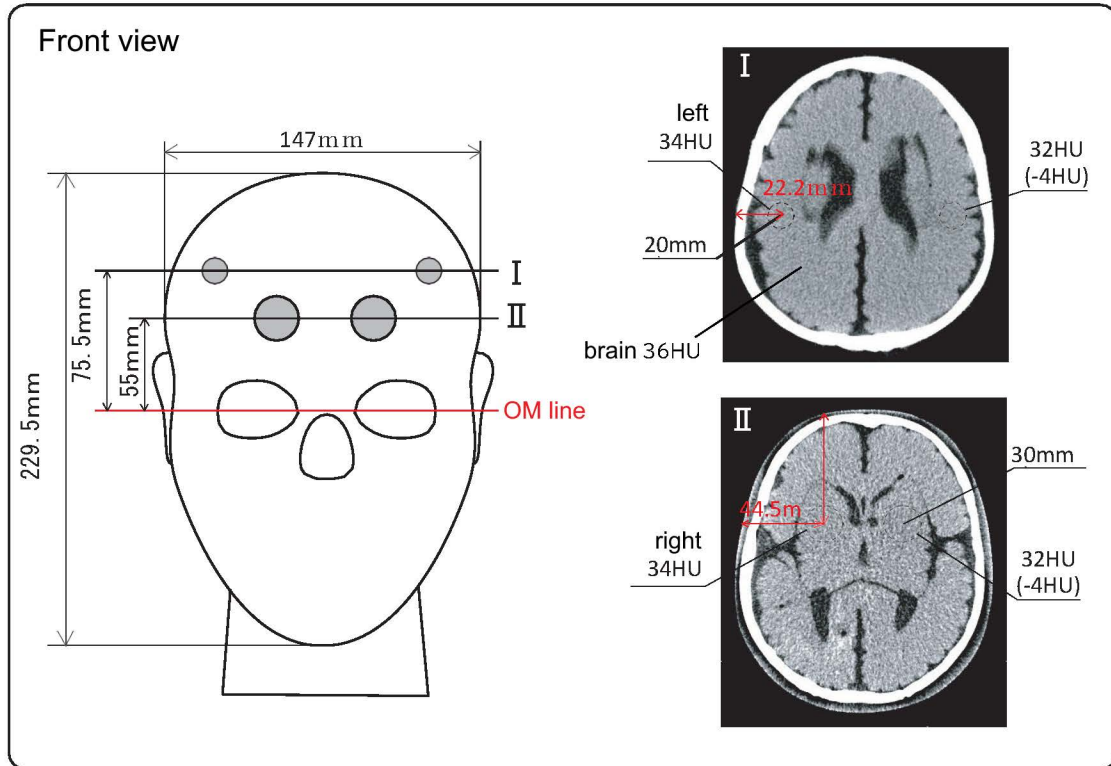
Please note: The color of the phantom may change over time, though, please be assured that this is not deterioration of the material and the features of the phantom stay unaffected.

Set includes



Phantom	1
Storage case	1
Instruction manual	1
Set of sample data (DVD)	..	1

Layout



CT value (calculated value 60KeV)

- Phantom: size of an average adult head
- Weight: appr. 5.3 kg
- Materials: soft tissue and skull - polyurethan resin
cervical vertebrae - epoxy resin

part	density	principal quantum number	electron density $\times 10^{23}$ e/g
brain (HU36)	1.0805	6.922	3.250
right tumor (HU34)	1.0797	6.897	3.250
left tumor (HU32)	1.0790	6.871	3.251
cerebral ventricle	1.062	6.212	3.257
cerebrospinal fluid	1.060	6.104	3.258
eyeball	1.068	6.443	3.255
soft tissue	1.060	6.104	3.258
cervical vertebrae	1.113	20.231	3.223
osteocortex	1.149	23.263	3.200

■ USA, Canada, and South America



WEB • www.kkamerica-inc.com

E-MAIL • info@kkamerica-inc.com

TEL : 1-310-325-8860 **FAX** : 1-310-325-8867

3109 Lomita Boulevard, Torrance, CA 90505-5108, USA

■ Europe, Russia & Africa

Kyoto Kagaku Europe GmbH.

TEL : +49-69-5060-28160

De-Saint-Exupery-Str.10,60549 Frankfurt, Germany

■ Worldwide Inquiries and Orders

☐ KYOTO KAGAKU co.,LTD

URL: <http://www.kyotokagaku.com> **e-mail**: rw-kyoto@kyotokagaku.co.jp

TEL : +81-75-605-2510 **FAX** : +81-75-605-2519

15 Kitanechoya-cho, Fushimi-ku, Kyoto, 612-8388, JAPAN

The contents of the instruction manual are subject to change without prior notice.

No part of this instruction manual may be reproduced or transmitted in any form without permission from the manufacturer. Please contact manufacturer for extra copies of this manual which may contain important updates and revisions.

Please contact manufacturer with any discrepancies, typos, or mistakes in this manual or product feedback. Your cooperation is greatly appreciated.