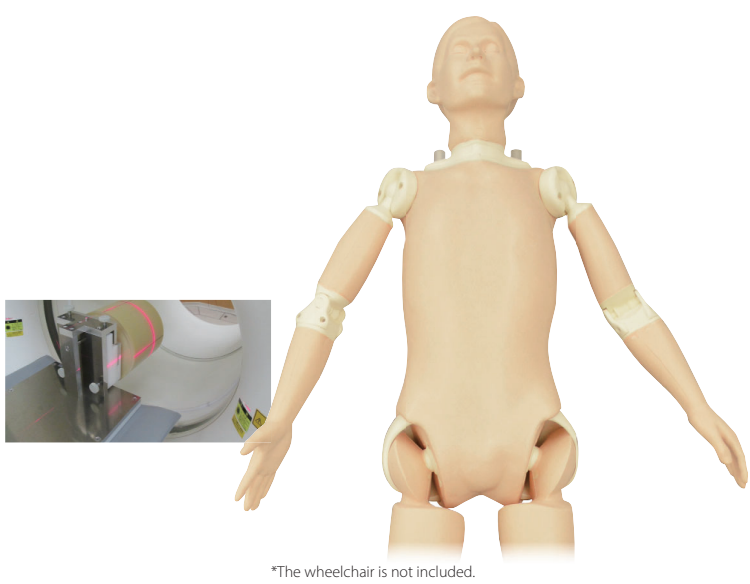


PH-79 | 41945-000

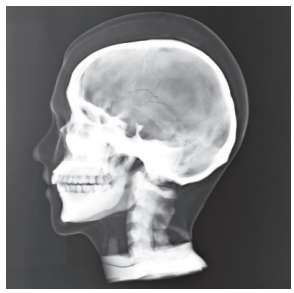
X-Ray Training Phantom PBU-POSE



For patient-friendly and accurate positioning learning
Supports scenario based trainings including communication skills



*The wheelchair is not included.



FEATURES

- | Light weight and close-to-human articulation as well as anatomical landmarks for positioning and patient handling.
- | Soft touch of phantom's skin facilitates realistic simulation training scenario including communication skills.
- | Radiography with a lower irradiation reducing risk for trainees and stress on the device.
- | Enables training free from privacy concerns and inconveniences associated with use of standardized patients.

APPLICATIONS

- | Patient positioning
- | Patient transportation
- | Plain radiography



ANATOMY

Skeletal system

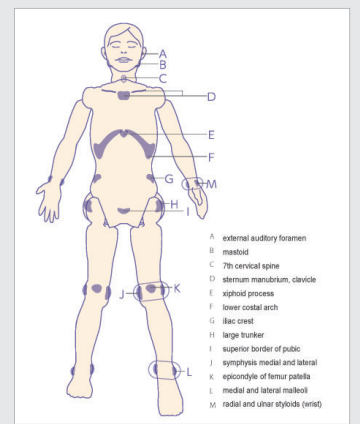
skull, cervical spine, vertebrae, clavicles, scapulae, sternum, pelvis, lungs (no vessels), heart, kidneys, upper and lower arm bones, carpal, metacarpal, femur, kneecaps, lower leg bones, tarsi, metatarsals, phalanges

Internal organs

trachea (up to 1st bifurcation), lungs (diaphragm only), heart, kidneys

Landmarks

external acoustic foramen, mastoid, seventh cervical vertebra, manubrium, xiphisternum, styloid process of radius, superior margin of the symphysis pubis, medial epicondyle of femur/epicondylus lateralis, patella, malleolus (internal condyle /external condyle), subcostal area, landmark on the body surface, trochanter, processus styloideus, ulnae



SET INCLUDES

- 1 whole body phantom
- 1 set of assembly tools
- 1 pajamas

MATERIALS

Soft tissue : polyurethane foam (density 0.2)
 Skeleton : epoxy resin (density 1.31)
 Skull : urethane resin (density 1.12)

SPECIFICATIONS

Phantom dimensions
 height: chest girth : 85cm (thickness : 20cm)
 165 cm/64.9in 33.5in (thickness : 7.9cm)
 weight: waist girth : 75cm (thickness : 19cm)
 18 kg / 39.69 lb 29.5 in (thickness : 7.5cm)

Packing size:
 W113×D59×H37 cm
 W44.5×D23.2×H14.6 in

