



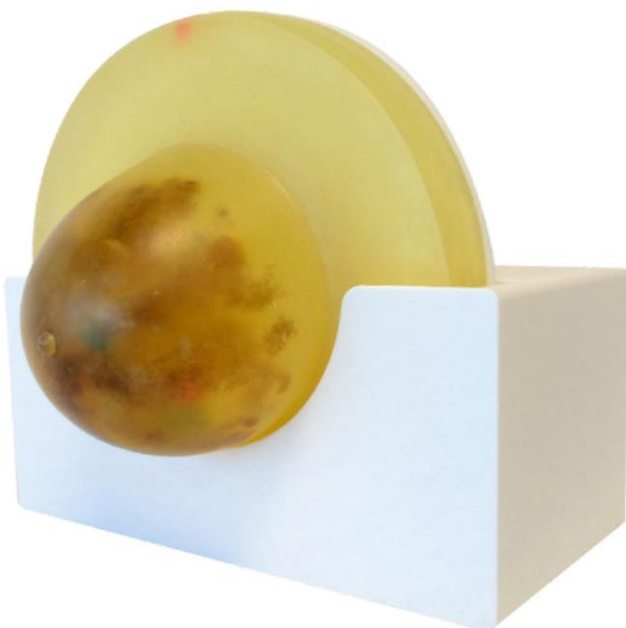
Caution

Don't mark on the phantom with pen or leave printed materials on its surface.  
Ink marks on the phantom will be irremovable.

PH-83

# Compressible Mammography Phantom Comp-AY

Instruction  
Manual



## Contents

### General Information

Product Features and Precautions..... 1~2

### Specifications

Set Includes ..... 3

Anatomies and Pathologies ..... 4

### Imaging

Preparation and Handling ..... 5



## Before you start

PH-83 is a phantom for hands-on training in patient positioning as well as study of breast compression, allowing for thorough visual evaluation under a variety of scanning conditions and image comparison of different modalities

### **Manufacturer's note**

PH-83 is designed for medical education training and research. Please do not use the product for other purposes. Any other use not in accordance with this manual is strongly discouraged. The manufacturer holds no responsibility for any accidents or damages resulting from such use.

### **Features**

Soft and resilient material of the phantom allows breast compression for imaging.

Three-dimensional structure of simulated mammary gland fibers and tumors to visualize realistic medical images.

Allows for visual evaluation under different scanning conditions and locations of tumors

Allows for image comparison of different modalities such as 2D and 3D mammography.

By rotating the phantom, a variation of location of lesions can be simulated.

### **Disclaimer**

Due to characteristics of polyurethane based materials of the phantom, the breast phantom may contain small amount of air bubbles. And since the natural origin material is used for the mammary gland of the phantom there may be some variations in minor structures.

Kindly be informed that these are not product defect and do not affect the performance of the phantom.

# Precautions

- **Handle with care**

This phantom is made from a special composition of resin. This phantom is made from a special composition of resin. Please handle with care, ensure that it is not dropped, and avoid any shock to prevent damage.

- **Clean and care**

Clean the phantom completely every time after finishing the training. Any remaining gel may deteriorate the phantom.

**Never wipe the phantom or with thinner or organic solvent.**

- **Avoid high temperature and humidity**

Keep the phantom at room temperature, away from heat, moisture and direct sunlight.

- **Color change may occur**

The color of the phantom may change over time. This does not however, impact the performance.

- **Do not write on the phantom**

Any ink on the phantom will be absorbed and become irremovable.

- **Do not leave printed materials on the phantom**

Do not leave printed materials in contact with the surface of the phantom. Ink may be absorbed and stains will be irremovable.

- **Please cover medical machine with the provided plastic wrap before starting the training.**

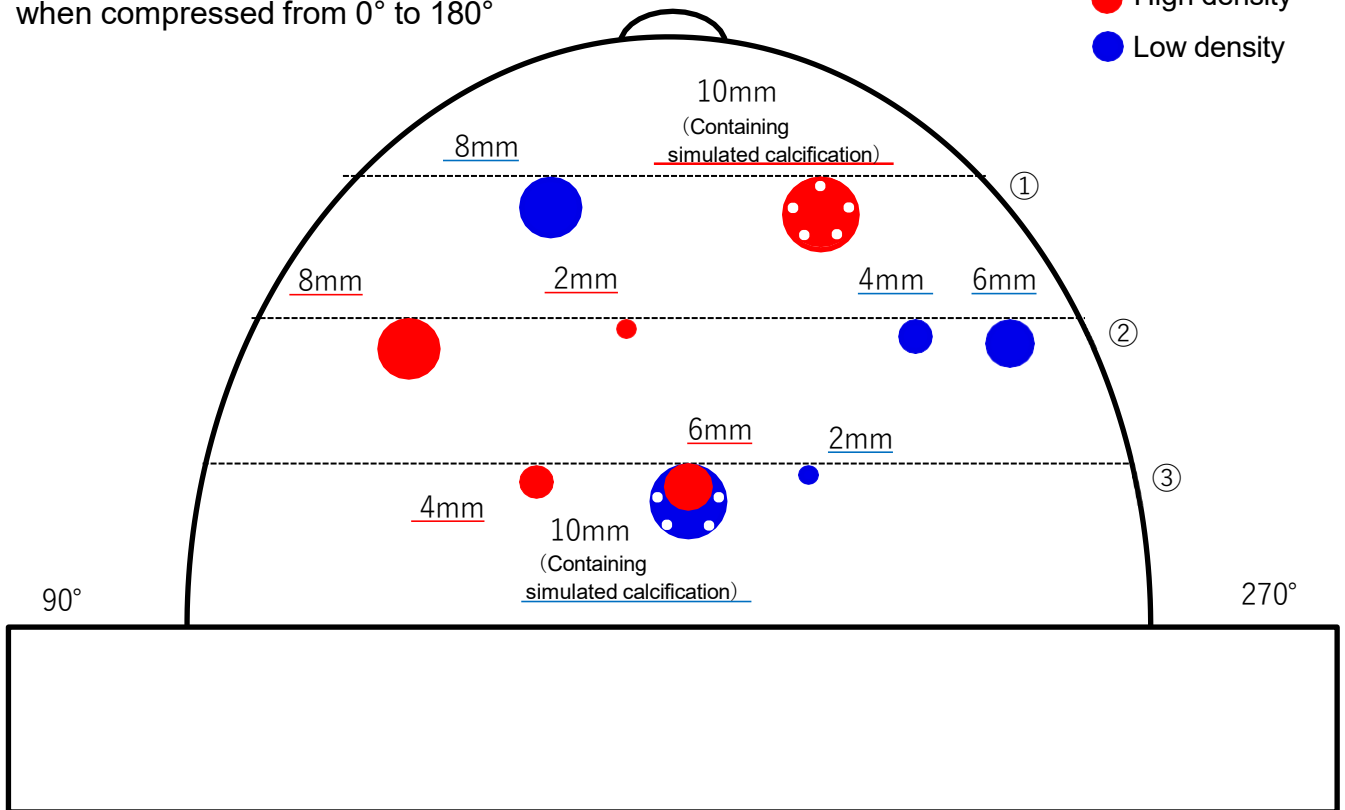
For the protection of the medical equipment and for hygienic reasons, please cover the photography platform and breast-pressing board with the provided plastic wrap before starting the training, to prevent direct contact between the phantom and the equipment.



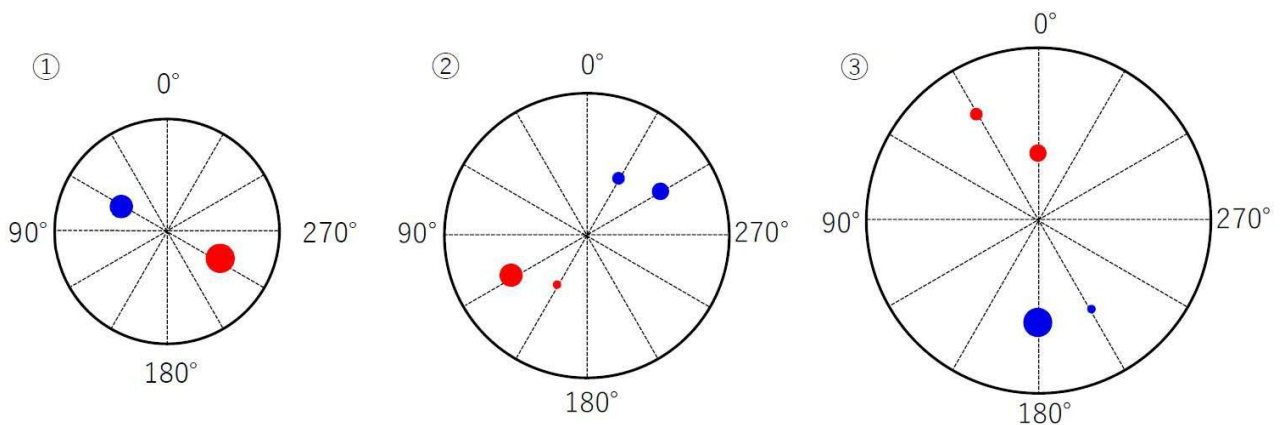
## Layout of targets

A diagram showing the image when compressed from 0° to 180°

- High density
- Low density



## Layout of each layer



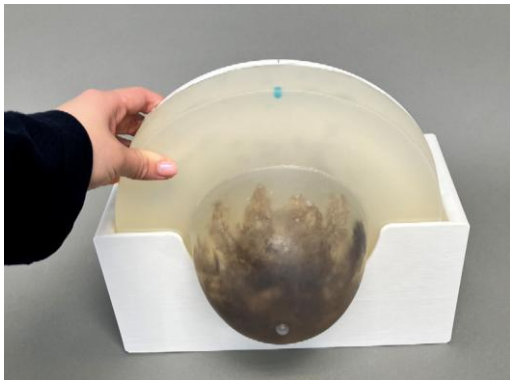
## Preparation



## Precaution

- Ensure that the cap of the weight tank is tightly closed.
- When transporting, always remove the phantom from the supporting holder and carry it separately. Carrying the holder while the phantom is set on it may result in it being the phantom.
- Be sure to empty the weight tank before storage.

For fall prevention, fill the weight tank with water and place it in the space within the supporting holder.



Set the breast phantom



Turn the phantom to set a layout for imaging

## Precaution

- For the protection of the medical equipment and for hygienic reasons, please cover the photography platform and breast-pressing board with the provided plastic wrap before starting the training, to prevent direct contact between the phantom and the equipment.
- If the provided plastic wrap runs out, use commercially available food film or similar instead.



## ■ USA, Canada, and South America



**WEB • [www.kkamerica-inc.com](http://www.kkamerica-inc.com)**

**E-MAIL • [info@kkamerica-inc.com](mailto:info@kkamerica-inc.com)**

TEL : 1-310-325-8860 FAX : 1-310-325-8867

3109 Lomita Boulevard, Torrance, CA 90505-5108, USA

## ■ Europe, Russia & Africa

Kyoto Kagaku Europe GmbH.

TEL : +49-69-5060-28160

De-Saint-Exupery-Str.10,60549 Frankfurt, Germany

## ■ Worldwide Inquiries and Orders

 **KYOTO KAGAKU co.,LTD**

URL: <http://www.kyotokagaku.com> e-mail: [rw-kyoto@kyotokagaku.co.jp](mailto:rw-kyoto@kyotokagaku.co.jp)

TEL : +81-75-605-2510 FAX : +81-75-605-2519

15 Kitanechoya-cho, Fushimi-ku, Kyoto, 612-8388, JAPAN

---

The contents of the instruction manual are subject to change without prior notice.

No part of this instruction manual may be reproduced or transmitted in any form without permission from the manufacturer.

Please contact manufacturer for extra copies of this manual which may contain important updates and revisions.

Please contact manufacturer with any discrepancies, typos, or mistakes in this manual or product feedback. Your cooperation is greatly appreciated.