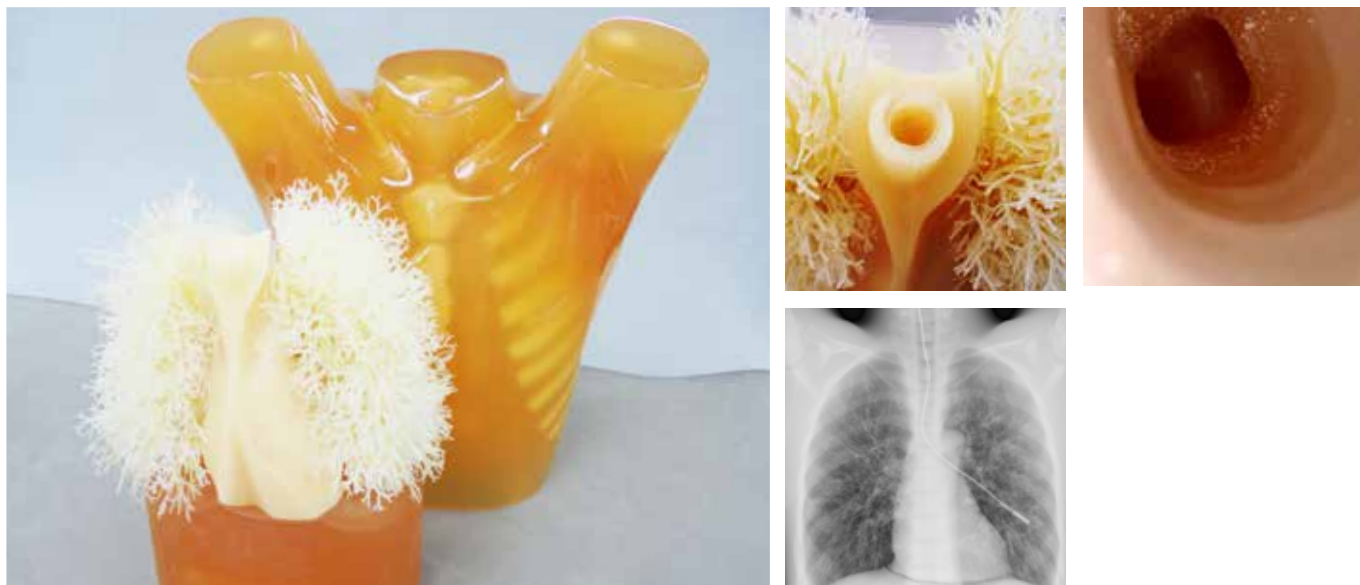


Bronchoscopy-compatible N-1 Lungman with Pulmonary Vessels



CHEST PHANTOMS

Lungman phantom with an open bronchus for bronchoscope



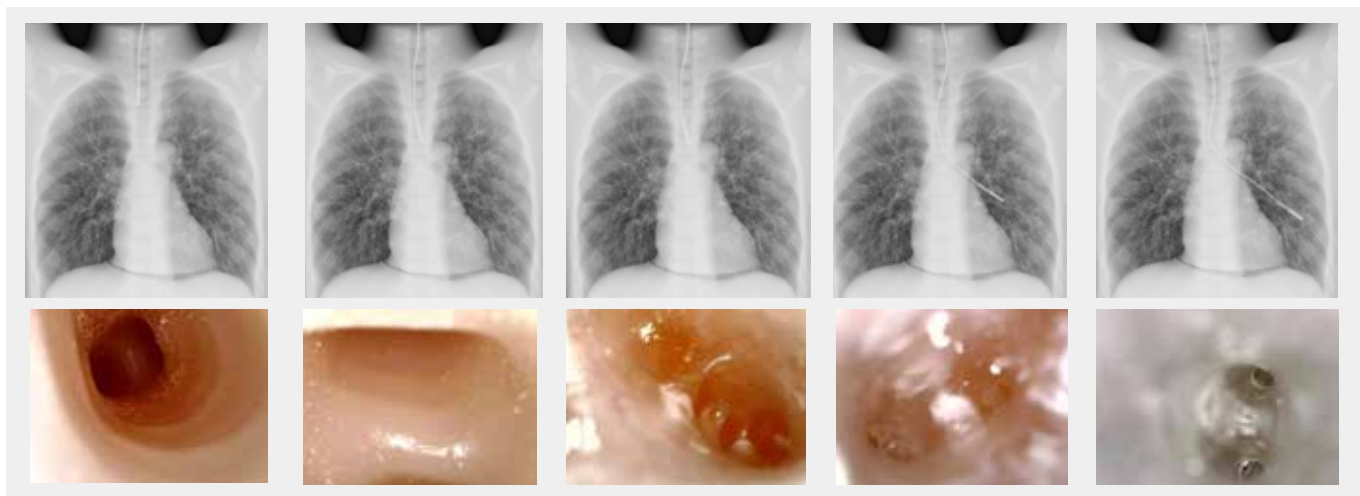
FEATURES

- | Close to human medical images under X-ray, CT, and fluoroscopy
- | The trachea and bronchi are hollow so that the bronchoscope can be passed into the airway up to the 4th~5th branches.
- | Optional chest plates to simulate X-ray absorption of a larger body type.

APPLICATIONS

- | CT
- | Plain X-ray
- | Fluoroscopy

Radiograph and bronchoscopic view



DESCRIPTIONS

SPECIFICATIONS

Phantom size:
W43×D20×H48 cm, chest girth 94 cm
W17×D8×H18 in, chest girth 37 in

Phantom weight:
18 kg / 39.6 lb

Packing size:
W63×D50×H29 cm
W24.8×D19.7×H11.4 in

Packing weight:
25 kg / 55.1 lb

MATERIALS

Soft tissue: urethane based resin (density: 1.06)
Synthetic bone: epoxy resin (density: 1.31)
*Phantom has no metal parts or liquid structure