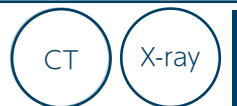


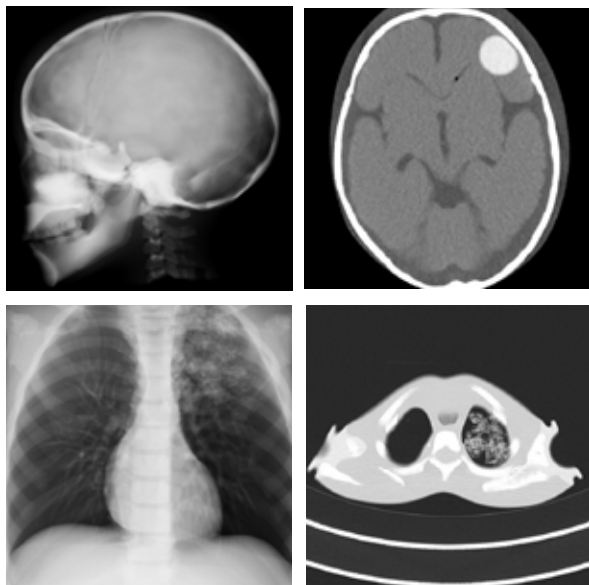
PH-2F 41350-510



CT Pediatric Whole Body Phantom with Pathologies PBU70-C

Whole body phantom including key pathologies for pediatrics such as pneumonia

ANTHROPOMORPHIC PHANTOMS



FEATURES

- | Includes organs and key pathologies for pediatric patients
- | Radiology absorption and HU number approximate to human body
- | Main joints have close-to-human articulation
- | Phantom can be disassembled into 10 individual parts

APPLICATIONS

- | Plain X-ray
- | CT
- | Basic patient positioning

ANATOMY and PATHOLOGIES

Bony Structure

skull / spine/ clavicles / scapulae / ribs / sternum / coxal bones / humerus / antebrachial bone / bones of hand / femur / patella / lower leg bone / bones of foot

HU numbers of each organ:

brain 40
liver 70
kidney 30

Internal organs

brain/lung with pulmonary vessels / trachea (up to primary bronchi) / heart / liver with portal and hepatic veins

Pathologies:

brain tumor (HU130)
pneumonia

DESCRIPTIONS

SET INCLUDES

1 pediatric whole body phantom	1 screwdriver
1 head supporter	1 set of sample X-ray data (DVD)
1 hand fixture belt	manual

SPECIFICATIONS

Phantom height: 110 cm
43.3 in

Packing size:
W86×D60×H32 cm
W33.8×D23.6×H12.6 in

Phantom weight:
20 kg / 44 lb

MATERIALS

Soft tissue: urethane based resin (density: 1.06)
Synthetic bone: epoxy resin (density: 1.31)
Skull: epoxy resin (density: 1.11)
*Phantom has no metal parts or liquid structure

OPTIONAL PARTS

41363-080 storage case for PH-2C / 2D

