

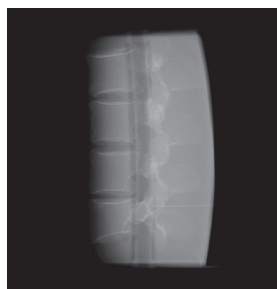
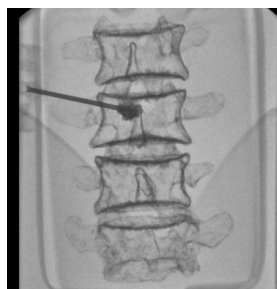
PH-51 | 41913-000



# Lumbar Spine Fluoroscopy Training Phantom

**Ideal training tool for hands-on workshop of vertebroplasty**  
**The phantom has two types of interchangeable and replaceable inserts with radio-opaque lumbar spine**

Product supervision:  
 Dr. David Wilson MBBS, BSc, MFSEM, FRCP, FRCR  
 Consultant Radiologist St Luke's Hospital Oxford  
 Senior Clinical Lecturer University of Oxford



"I have tested the final product with various different manufacturing kits and would have no hesitation in recommending these phantoms to clinicians who wish to teach any of the technical vertebroplasty procedures."

DR DAVID J WILSON MBBS BSc MFSEM FRCP FRCR  
 CONSULTANT MUSCULOSKELETAL INTERVENTIONAL RADIOLOGIST

## FEATURES

- | Two types of replaceable training block: vertebroplasty block and anesthesia block
- | Lumbar spine L2-L5 can be visualized under X-ray.
- | True-to-life sensation when penetrating tissue and bones

## TRAINING SKILLS

- | Recognition of fluoroscopic anatomy and landmarks
- | Vertebroplasty
- | Fluoroscopy guided epidural anesthesia: needle placement in facet joint injection, root block and discogram.

## ANATOMY

- | Lumbar spine (L2-L5)
- | Spinal canal
- | Epidural space (anesthesia block only)

## DESCRIPTIONS

### SET INCLUDES

- |                        |                  |
|------------------------|------------------|
| 1 lumbar torso         | 1 syringe        |
| 1 vertebroplasty block | 1 irrigation bag |
| 1 anesthesia block     | 1 storage case   |
| 1 skin cover           | manual           |

### MATERIALS

Soft tissue: urethane based resin (vertebroplasty block)  
 silicone (anesthesia block)  
 Synthetic bone: epoxy resin

### SPECIFICATIONS

Phantom size: W33 x D21 x H30 cm W13 x D8.2 x H11.8 in	Packing size: W52 x D44 x H30 cm W20.4 x D17.3 x H11.8 in
--	---

### REPLACEMENT PARTS

- |              |                      |
|--------------|----------------------|
| 41913-000-01 | anesthesia block     |
| 41913-000-02 | vertebroplasty block |
| 11348-150    | skin cover           |

### RELATED PRODUCTS



M43E/ 11348-500 Ultrasound Compatible Lumbar Puncture/Epidural Simulator  
 | Ultrasonic anatomy and needle access training

