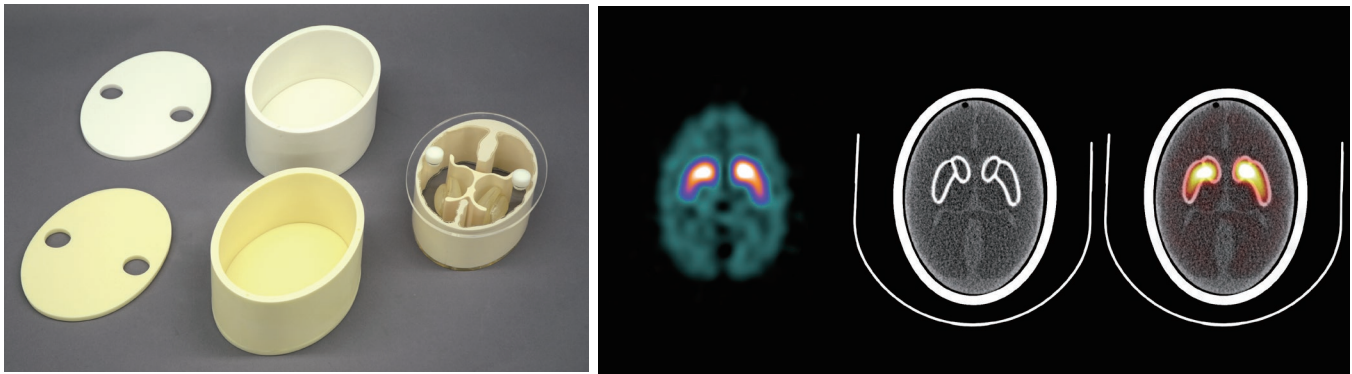


PH-53 | 41918-000

## Brain Phantom IB-20 advanced



*For uptake ratio calibrations and studying the L-123DaTSCAN scatter correction techniques*



### FEATURES

This brain phantom of the striatal region with replicated skull densities of a male and female is useful for uptake ratio calibrations and studying the I-123 DaTSCAN scatter correction techniques.

### APPLICATIONS

SPECT, PET  
EVALUATION PARAMETERS:  
common with IB-20

### DESCRIPTIONS

#### SET INCLUDES

- 2 bone scatterer cases  
adult male: equivalent HU750  
elderly female: equivalent HU530
- 1 brain striatum phantom
- 1 screwdriver

- 1 velcro tape
- 1 petroleum jelly
- 1 storage case manual

#### SPECIFICATIONS

Phantom size:  
W21 x D15 x H8 cm  
W8.2 x D5.9 x H3.1 in

#### MATERIALS

Brain striatum: epoxy resin  
Brain striatum container: urethane resin  
Cerebral ventricle: urethane resin  
Brain stratum phantom cover: acrylic  
Bone scatterer case: epoxy resin

PH-27 41530-000

## Brain Phantom IB-10

**Dual- fluid system to vary the absorption rate, and 5 cm thickness for the vertical setting of the camera**



SHOW MORE!



### APPLICATIONS

SPECT, PET

### EVALUATION PARAMETERS

- Homogeneity evaluation
- Cross calibration
- Gamma ray absorption rate by a skull
- Detectivity of gray matter and white matter
- Spatial resolution of negative images (IB-10 set only)
- Radioactive concentration and linearity of SPECT value (IB-10 set only)

### DESCRIPTIONS

#### SET INCLUDES

- 1 brain unit
- 1 skull container unit
- 1 J-Jack phantom
- 1 section phantom

#### MATERIALS

Acrylic resin/ urethane resin

#### SPECIFICATIONS

Phantom size:  
W21 x D15 x H8 cm / W8.2 x D5.9 x H3.1 in