

PH-55

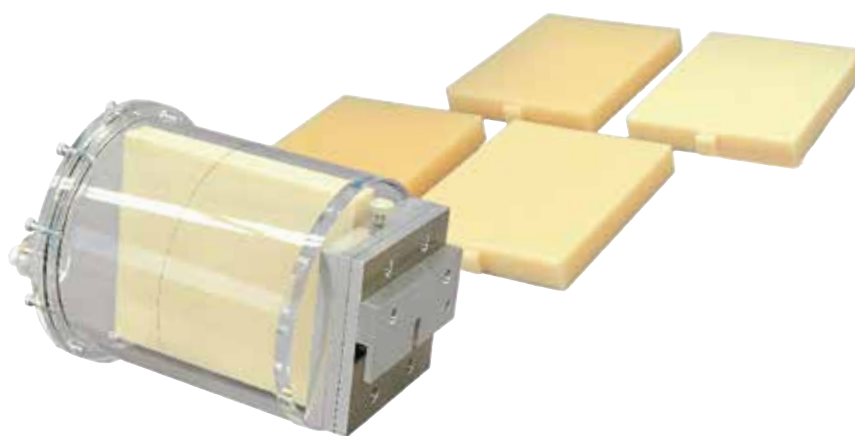
41920-100

CT ERF Phantom HIT

CT



A phantom designed for physical evaluation of iteratively reconstructed images under low CNR



SHOW MORE!



FEATURES

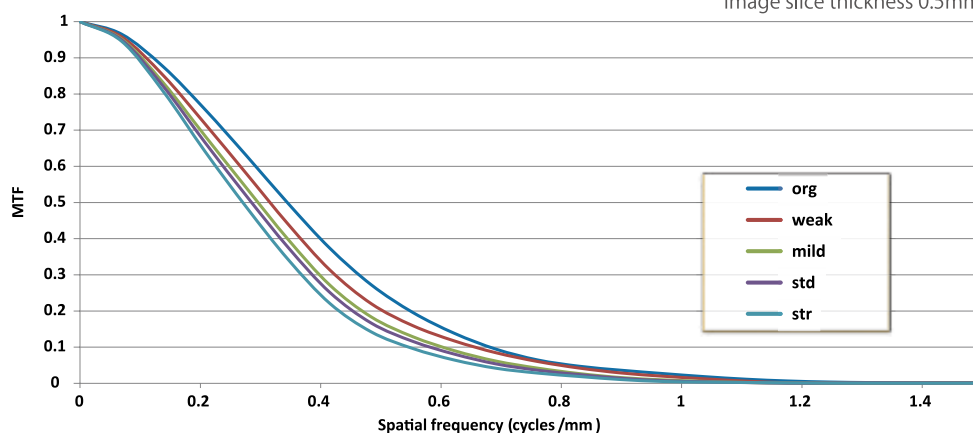
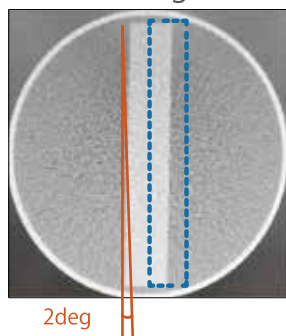
- This phantom designed to physically evaluate the performance of successive approximation reconstruction images under low CNR conditions when MTF evaluation by PSF is not very appropriate without deviating from clinical practice.
- This phantom is used to evaluate MTF from low-CNR images using the ESF method, which measures the blurring of block edges, so that performance characteristics in reconstructed images applying successive approximation under low-CNR conditions can be determined.

APPLICATIONS

CT

▼ Modulation Transfer Function
image slice thickness 0.5mm

▼ Image



DESCRIPTIONS

SET INCLUDES

- | | |
|---------------------------------------|---|
| 1 cylindrical container (200 mm dia.) | 1 fixture for the cylindrical container |
| 5 measurement plates | 1 philips screw driver |
| 1 rotation holder | extra screws |
| 1 petroleum jelly | 1 storage case |
| 1 angle adjustment holder | manual |

SPECIFICATIONS

Phantom size: 20 dia.×25 cm
7.8 dia.×9.8 in

Phantom weight: 4.5 kg / 10 lb

MATERIALS

Acrylic resin, polyurethane



41919-010
Angle adjustment holder (table-top type)
*included in the set
Compatible with PH-9