

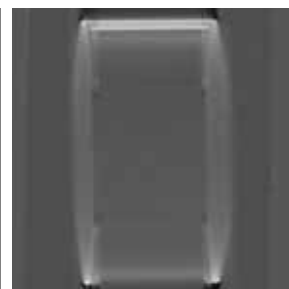
PH-56 | 41921-000

# Tomosynthesis Phantom NS

Allowing evaluation of reconstruction slices and uniformity  
in the measurement of slice thickness through showing the images numerically and graphically



SHOW MORE!



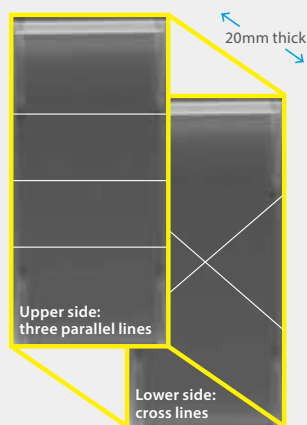
## APPLICATIONS

| Tomosynthesis

## EVALUATION PARAMETERS

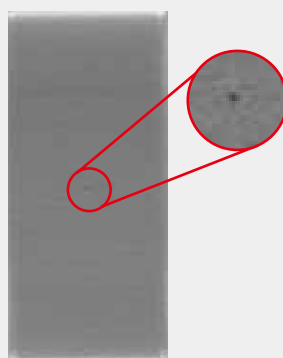
| Verification of reconstruction interval  
| Slice thickness  
| Uniformity

### Reconstruction interval unit



For verification of the spatial interval in reconstruction  
Stainless steel line: 0.1 mm/0.004 in dia.

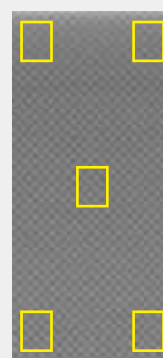
### Slice thickness unit



For calculation of slice thickness using FWHM

Hole: 1.0 mm/0.04 in dia.  
Aluminum plate: 0.5mm/0.02 in thick  
Acrylic plate 5mm/0.2 in thick.  
\*the aluminum plate is sandwiched between layers of Acrylic  
70×150 mm/2.8×5.9 in

### Uniformity unit



For evaluation of uniformity and tilting of the examination table  
70×150 mm/2.8×5.9 in

### Height setting rack



Test units can be set in the aluminum supporting box at 10, 15 or 20 mm (0.4, 0.6 or 0.79 in) height

## DESCRIPTIONS

### SET INCLUDES

- 1 reconstruction positioning unit
- 1 slice thickness unit
- 1 uniformity unit

height setting rack  
manual

### MATERIALS

Acrylic resin, Bakelite, aluminum, copper, stainless

### SPECIFICATIONS

Phantom size:  
W7×D15×H25 cm / W2.7×D6×H9.8 in

Packing size:  
W46×D31×H17 cm / W18.1×D12.2×H6.7 in

Packing weight:  
2 kg / 4.4 lb