

PH-59 | 41924-000

CT-DI Phantom (Head and Body Phantom)

Dosimetry



A set of phantoms for CTDI-100, conforming to requirements described in 21 CFR 1020.33, IEC 61223-3-5: 2004, and IEC 61223-2-6: 2006 as consistency test



A set with different type of tissue substitute can be custom-ordered

SHOW MORE!



FEATURES

- Represent adult head and body as well as pediatric body
- Can be used for initial and follow-up QA tests

EVALUATION PARAMETERS

- Computed Tomography Dose Index (CTDI)
- Dose profile

DESCRIPTIONS

SET INCLUDES

- 1 head phantom
- 1 body phantom
- 10 filling rods
- manual

SPECIFICATIONS

Phantom size:
Body phantom: 32 dia.×15 cm / 12.6 dia.×5.9 in
Head phantom: 16 dia.×15 cm / 6.3 dia.×5.9 in

Phantom weight:
15kg / 33lb, 4kg / 8.8lb

MATERIALS

Acrylic resin

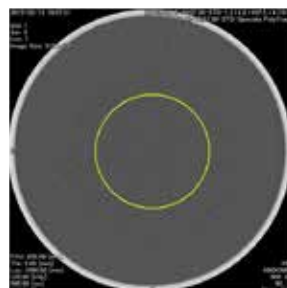
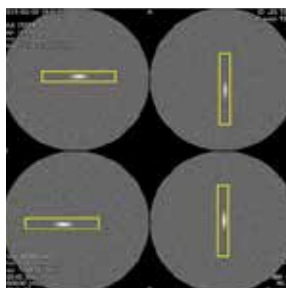
PH-54 | 41919-000

CT QA Phantom JCT II

CT



CT QA phantom for acceptance test as well as daily QC



SHOW MORE!

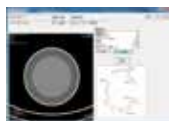
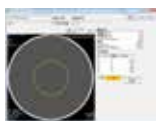
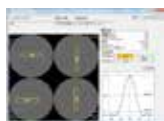


FEATURES

- The phantom can be used for initial and follow-up QA tests listed below, described in JIS Z 4752-3-5: 2008 (IEC 61223-3-5: 2004) and Z 4752-2-6: 2012 (IEC 61223-2-6: 2006)
- Conforming to JIS Z 4923:2015

EVALUATION PARAMETERS

- Axial scan:
Slice thickness / spatial resolution / low contrast resolution / noise / mean HU number / uniformity
- Helical scan:
Slice thickness



*System requirements of software (Japanese language) : OS Windows 7 (64 bit), Windows 8.1 Pro (64 bit), memory 4GB, HDD 250 GB

DESCRIPTIONS

SET INCLUDES

- 1 cylindrical container
- 1 slice thickness unit (axial)
- 1 spatial resolution unit
- 1 repeated pattern unit
- 1 low contrast resolution unit
- 2 slice thickness unit (helical)
- 1 fixture for the slice thickness unit
- 1 fixture for the cylindrical container
- 1 Vaseline
- 1 set of screws (spare)
- 1 angle adjustment holder (table top type)
- manual

SPECIFICATIONS

Phantom size:
20 dia.×20 cm / 7.9 dia.×7.9 in
Phantom weight:
3 kg / 6.6 lb

MATERIALS

Acrylic resin, polyurethane, stainless