

PH-69 | 41930-000

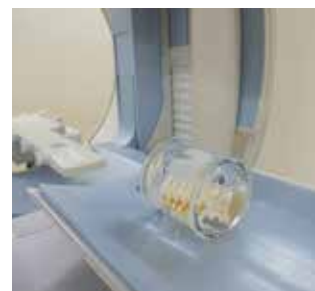
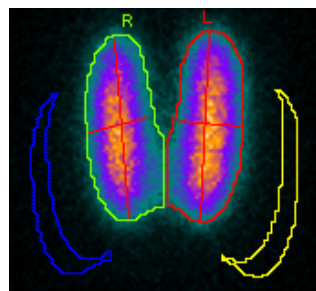
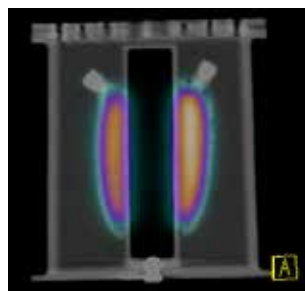
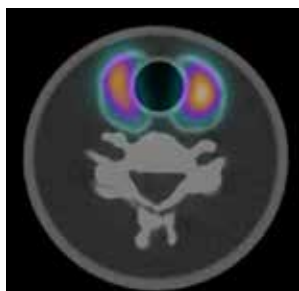
Thyroid Phantom UN



Five varying volumes of precision containers allow for various cases of measurement



SHOW MORE!



FEATURES

The set of the phantoms facilitate evaluation of the RI uptake of the thyroid and the assessment of its function.
The phantom also serves for dosimetry study in internal exposure.

- 5 kinds of thyroid grand (40,30,21,17,15 cc)
- Synthetic cervical vertebrae as a scatteration
- Infusing radiopharmaceuticals

APPLICATIONS

SPECT, PET

ANATOMY

Cervical spine C3 to C7

	Volume
Thyroid 1	14.7 ml
Thyroid 2	16.7 ml
Thyroid 3	20.7 ml
Thyroid 4	30.2 ml
Thyroid 5	39.0 ml

DESCRIPTIONS

SET INCLUDES

- | | |
|-----------------------|------------------|
| 1 outer phantom | 1 cervical spine |
| 5 thyroid containers | 1 trachea tube |
| 1 thyroid (cold spot) | 1 storage case |
| | 1 manual |

MATERIALS

Container: acrylic resin
Synthetic bone: epoxy resin
Thyroid: acrylic resin

SPECIFICATIONS

phantom size:	phantom weight:
13 dia.×H11.6 cm	0.85 kg
5.1 dia.×H4.6 in	1.87 lb

