

**Caution:**

Don't mark on the phantom with pen or leave  
printed materials contacted on its surface.  
Ink marks on the phantom will be irremovable.

PH-71

# Knee Ligament Phantom

## Instruction Manual



## Contents

- Please read
  - General Information . . . . . P. 1
  - Before use . . . . . P. 2
  - Specification . . . . . P. 3-4
- Images
  - X-ray Images . . . . . P. 5



## Please read

Thank you for purchasing PH-71 Knee Ligament Phantom. This is the phantom for training of X-ray training in knee ligaments.

Please read

Do not use this phantom outside of its original purposes. Kyoto Kagaku shall not be held any responsible for the damages or accidents caused by way of use not mentioned in this manual.

Features

- Bone cartilage, meniscus and ligaments of knee joints are included.
- This phantom is made of KK original soft tissue substitute and synthetic tissue that have close to human radiation absorption rate. CT images with true-to-life contrast and artifact can be acquired.
- The spongy bone is not represented.

## Caution

● **Handle with care**

The models consists of special compositions of resin. Please handle them with the utmost care at all times.

- Never wipe the phantom with thinner or organic solvent

● **Storage**

Store model at room temperature, away from shock, heat, moisture and directs sunlight.

- Don't mark on the models with pen or leave any printed materials in contact with their surface. Ink marks on the models are not removable.

Before use

Before use

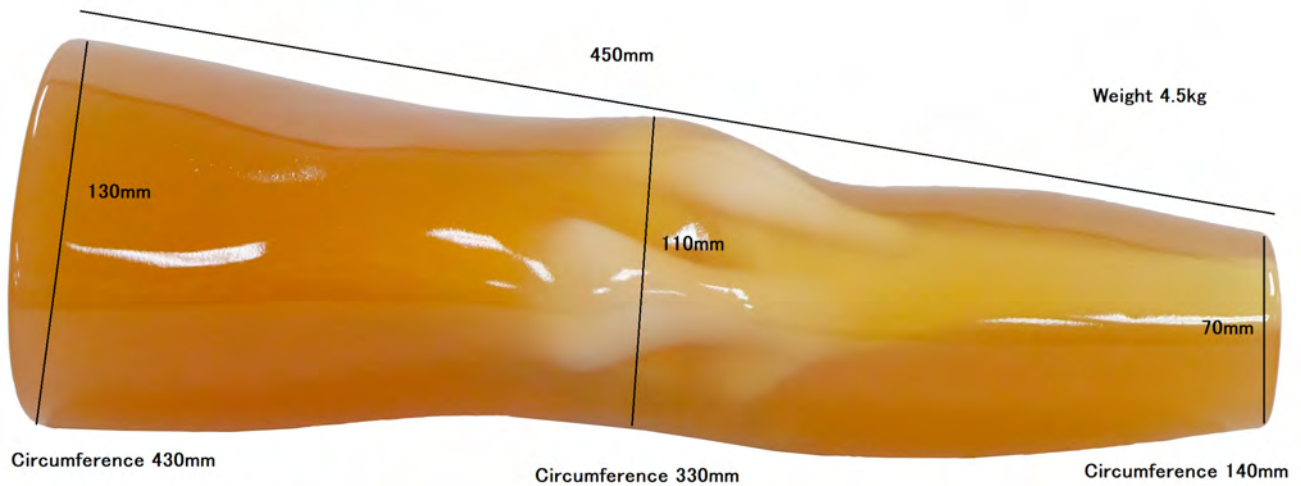
### Set includes

Before your first use, please ensure that you have all components listed below.



- a. Knee ligament phantom .....1
- b. Storage Case.....1
- c. Instruction manual.....1

## Shape and material

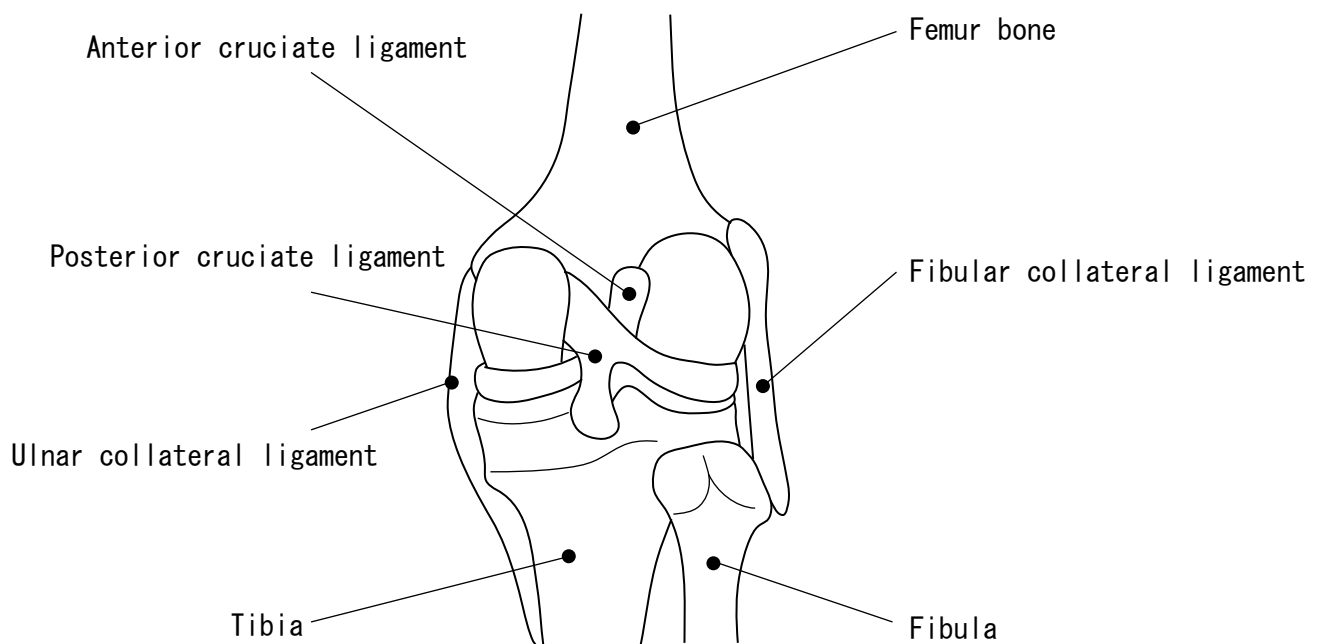
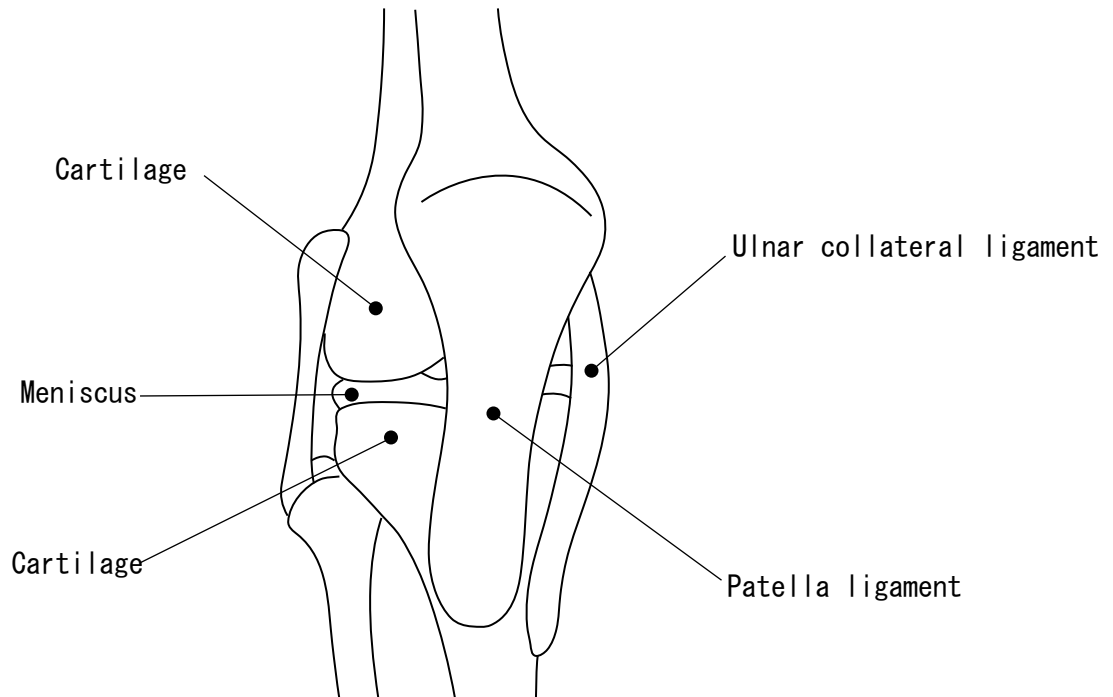
ShapeMaterial

- 1) Bone : Epoxy resin (Specific gravity 1.31)
- 2) Soft resin : Polyurethane resin (Specific gravity 1.06)
- 3) 5bUhc]Yg

<l`j U`i Yg`cZ`YUW`dUfh`UFY``]ghYX`WY`ck

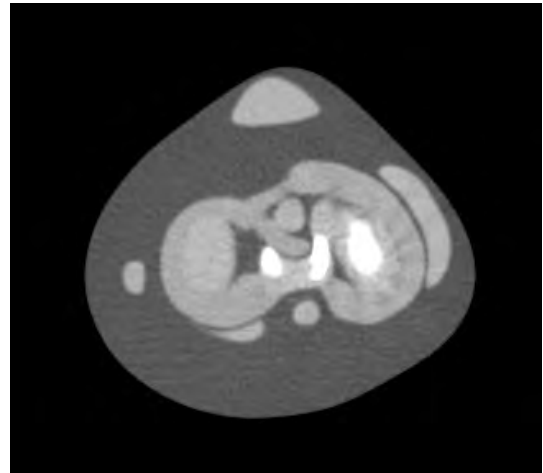
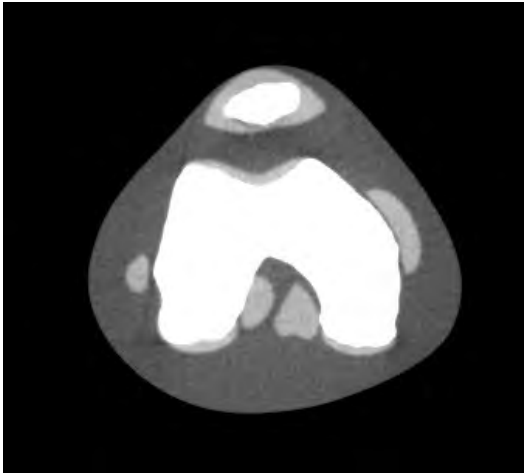
DUfh	HU Value	.....KeV
: Ya i f`VcbY	345	80
HjV]U	345	
: ]Mi`U	345	
DUhY`U	345	
7 Ufh]`U[`Y	106	
A Yb]gW`g	90	
5bhYf]cf`7fi`VUHY`@[`Ua`Ybh	99	
DcghYf]cf`7fi`VUHY` Ligament	99	
Ulnar Collateral Ligament	99	
Fibular Collateral Ligament	99	

Anatomies



### X-ray Images

#### Image samples





## Caution

Don't mark on the phantom with pen or leave printed materials contacted on its surface.  
Ink marks on the phantom will be irremovable.

• If you have any questions, please contact the dealer you purchased the product or Kyoto Kagaku Co., Ltd. below.

### ■ Main Office and Factory (World Wide)



**WEB**•[www.kyotogagaku.com](http://www.kyotogagaku.com)

**E-MAIL**•[rw-kyoto@kyotokagaku.co.jp](mailto:rw-kyoto@kyotokagaku.co.jp)

15 kitanekeya-cho Fushimi-ku Kyoto 612-8388, Japan

TEL: +81-75-605-2510

FAX: +81-75-605-2519

2021.04

### ■ North and South American regions:



**WEB**•[www.kkamerica-inc.com](http://www.kkamerica-inc.com)

**E-MAIL**•[info@kkamerica-inc.com](mailto:info@kkamerica-inc.com)

3109 Lomita Boulevard, Torrance, CA 90505-5108, USA

TEL: +1-310-325-8860

(Toll-free in North America: 877-648-8195)

FAX: +1-310-325-8867