

Caution:

Don't mark on the phantom with pen or leave printed materials contacted on its surface.  
Ink marks on the phantom will be irremovable.

PH-71

# Knee Ligament Phantom

Instruction  
Manual



## Contents

- Please read
  - General Information . . . . . P. 1
  - Before use . . . . . P. 2
  - Specification . . . . . P. 3-4
- Images
  - X-ray Images . . . . . P. 5



## Please read

Thank you for purchasing PH-71 Knee Ligament Phantom. This is the phantom for training of X-ray training in knee ligaments.

Please read

Do not use this phantom outside of its original purposes. Kyoto Kagaku shall not be held any responsible for the damages or accidents caused by way of use not mentioned in this manual.

Features

- Bone cartilage, meniscus and ligaments of knee joints are included.
- This phantom is made of KK original soft tissue substitute and synthetic tissue that have close to human radiation absorption rate. CT images with true-to-life contrast and artifact can be acquired.
- The spongy bone is not represented.

## Caution

● **Handle with care**

The models consists of special compositions of resin. Please handle them with the utmost care at all times.

- Never wipe the phantom with thinner or organic solvent

● **Storage**

Store model at room temperature, away from shock, heat, moisture and directs sunlight.

- Don't mark on the models with pen or leave any printed materials in contact with their surface. Ink marks on the models are not removable.

Set includes

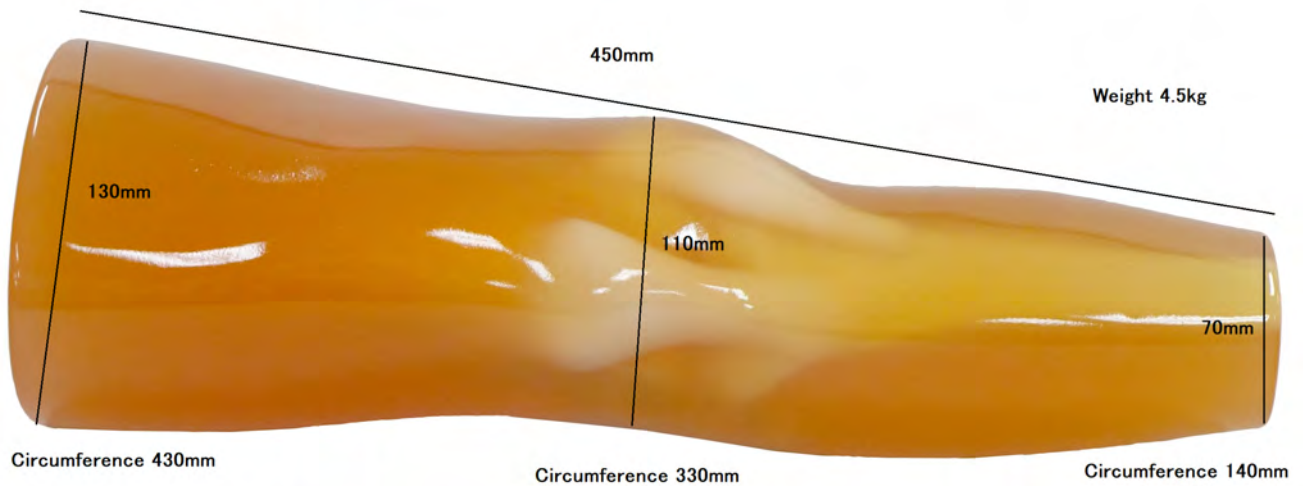
Before your first use, please ensure that you have all components listed below.



- a. Knee ligament phantom .....1
- b. Storage Case.....1

Shape and material

Shape



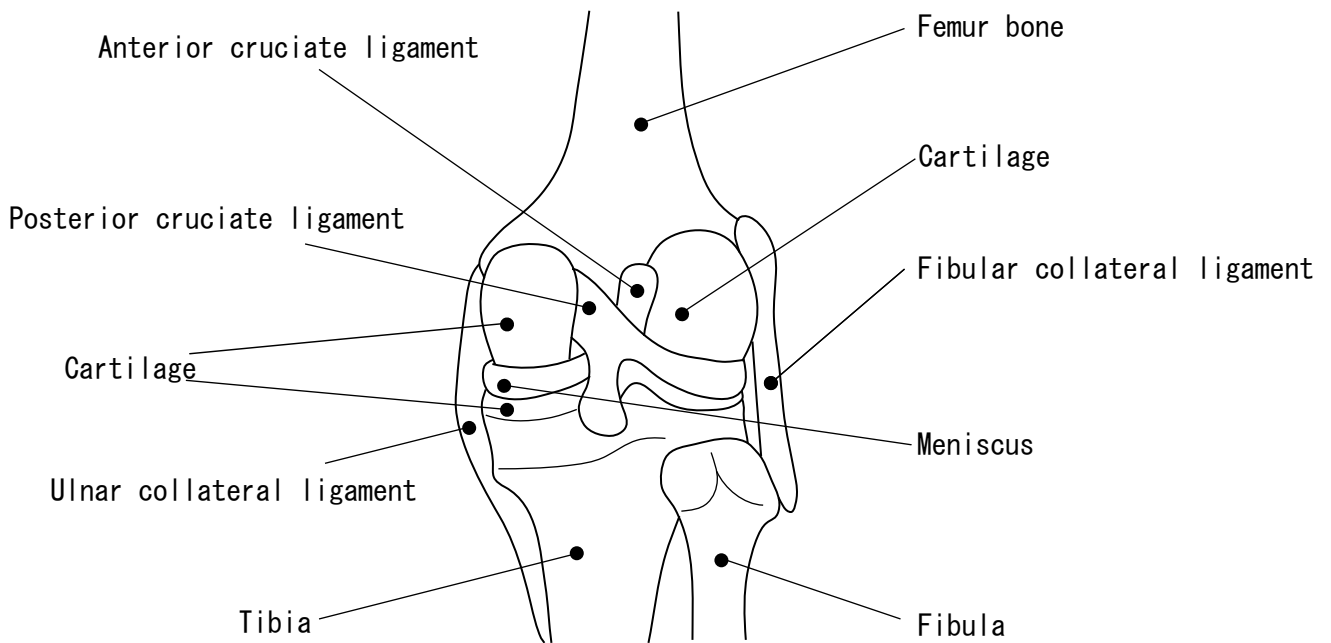
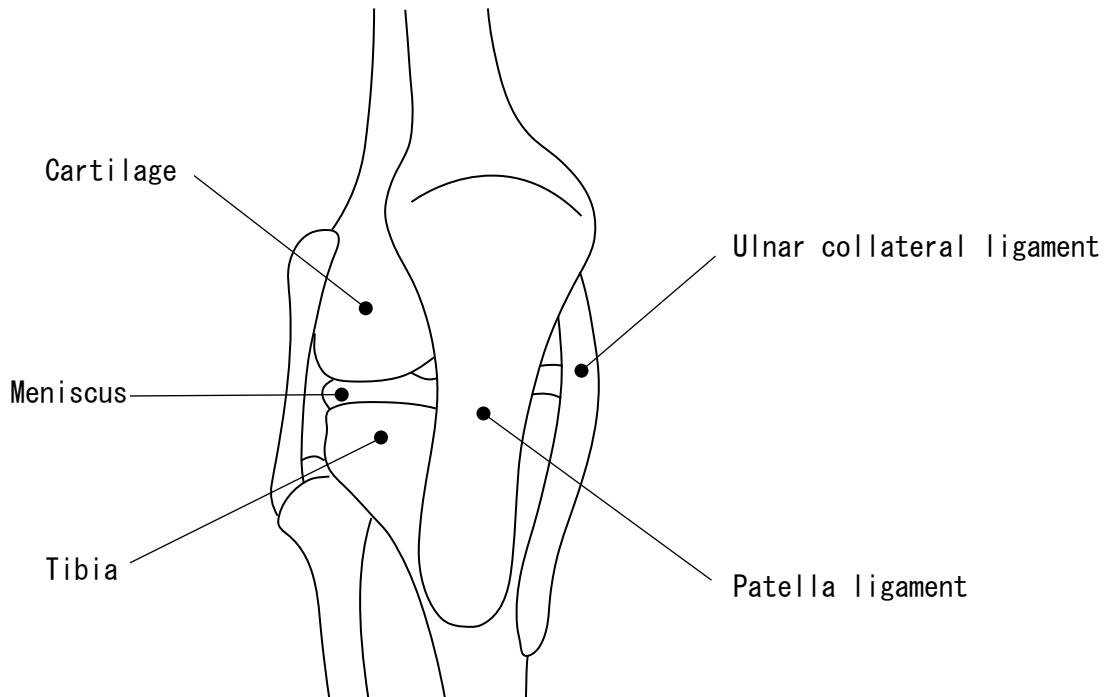
Material

- 1) Bone : Epoxy resin (Specific gravity 1.31)
- 2) Soft resin : Polyurethane resin (Specific gravity 1.06)
- 3) 5bUhc]Yg

<l j U i Yg cZ YUW dUfh UFY` ]ghYX W` ck

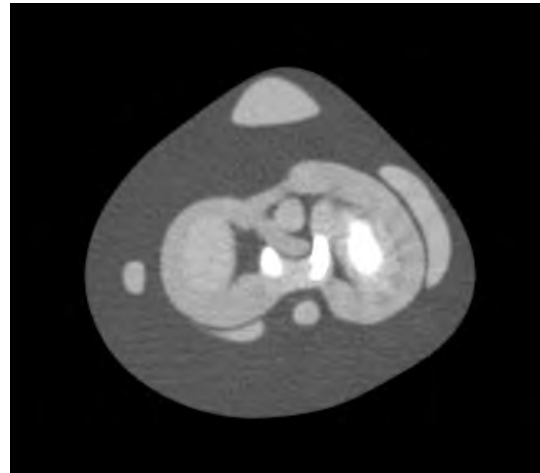
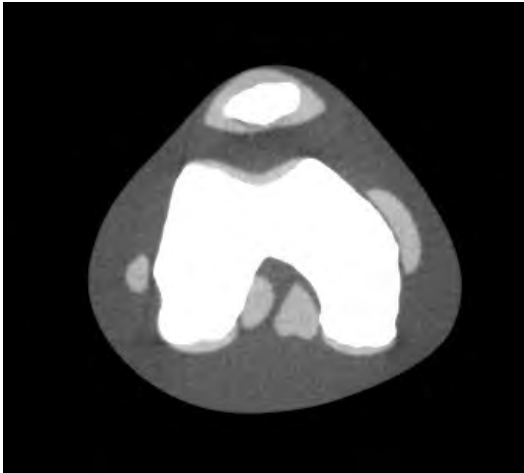
DUfh	HU Value	.....KeV
: Ya i f VcbY	345	80
HjVjU	345	
: jMi`U	345	
DUH`U	345	
7 Ufh]U[ Y	106	
A Yb]gW g	90	
5bhYf]cf 7 fi VUH`@] Ua Ybh	99	
DcghYf]cf 7 fi VUH` Ligament	99	
Ulnar Collateral Ligament	99	
Fibular Collateral Ligament	99	

Anatomies



X-ray Images

Image samples





## Caution

Don't mark on the phantom with pen or leave printed materials contacted on its surface.  
Ink marks on the phantom will be irremovable.

## **KYOTO KAGAKU co.,LTD**

WEB:[www.kyotokagaku.com](http://www.kyotokagaku.com) e-mail:[rw-kyoto@kyotokagaku.co.jp](mailto:rw-kyoto@kyotokagaku.co.jp)

---

### **Worldwide Inquiries & Ordering**

Kyotokagaku Head Office and Factories:

15 Kitanechoya-cho, Fushimi-ku, Kyoto, 612-8388, JAPAN

Tel: +81-75-605-2510 Fax: +81-75-605-2519

### **All America regions:USA, Canada, and South America**



WEB:[www.kkamerica-inc.com](http://www.kkamerica-inc.com) E-MAIL:[info@kkamerica-inc.com](mailto:info@kkamerica-inc.com)

3109 Lomita Boulevard, Torrance, CA 90505-5108, USA

Tel: 1-310-325-8860 Fax: 1-310-325-8867

(Toll free in North America:877-648-8195)

### **Europe, Russia & Africa**

**Kyoto Kagaku Europe GmbH.**

TEL:+49-69-5060-28160

De-Saint-Exupery-Str.10, 60549 Frankfurt, Germany

---

The contents of the instruction manual are subject to change without prior notice.

No part of this instruction manual may be reproduced or transmitted in any form without permission from the manufacturer.

Please contact manufacturer for extra copies of this manual which may contain important updates and revisions.

Please contact manufacturer with any discrepancies, typos, or mistakes in this manual or product feedback. Your cooperation is greatly appreciated.