

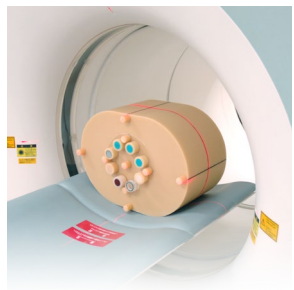
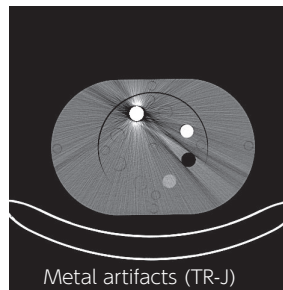
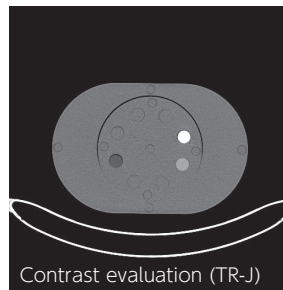
PH-75B | 41941-100 (TR-I) PH-75A | 41941-000 (TR-J)

Multi Energy CT Quality Assurance Phantom



Water Equivalent Material, various inserts and empty bottles enable to verify the appropriate Multi-Energy CT settings

Co-developed with:
Katsuhiko Ichikawa, Ph.D.,
Institute of Medical,
Pharmaceutical and Health Sciences,
Kanazawa University



FEATURES

- | Phantom using innovative Water Equivalent Material
- | Empty bottles enable to put various items and check how they react to Multi Energy CT
- | Save time and efforts to produce custom-made water phantoms
- | Two different sizes of body. (TR-I, TR-J)

APPLICATIONS

- | Study for ME-CT image analysis protocol
- | Metal artifact reduction
- | Reduction of contrast media

Inserts

Color	Name	Size	Qty
Silver	Water Equivalent Material Inserts	φ20mm	8
Red	Titanium Insert	φ12mm	1
Blue	Soft tissue (equivalent to liver)	φ20mm	1
Blue	Iodine concentration 4mgI/mL	φ20mm	1
Blue	Iodine concentration 8mgI/mL	φ20mm	1
Transparent	Iodine concentration 12mgI/mL	φ20mm	1
	Water container	φ20mm	1
	Empty bottle with spacer *for experiment		20

EVALUATION PARAMETERS

- | Uniformity
- | Signal-to-noise ratio (SNR)
- | Image contrast
- | CT dose index (CTDI)

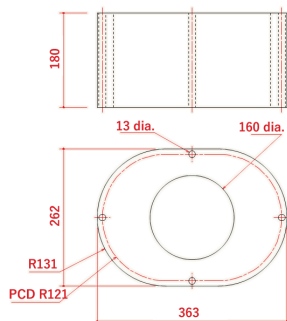
DESCRIPTIONS

SET INCLUDES

- | | |
|---------------------------------------|---------------------------|
| 1 truck phantom | 1 soft tissue insert |
| 1 internal cylindrical phantom | 1 water container inserts |
| 9 Filling inserts for dosimeter holes | 20 empty bottle |
| 8 WEM inserts | 8 spacer for empty bottle |
| 3 iodine inserts (4, 8, 12mgI/mL) | manual |
| 1 titanium insert | |

SPECIFICATIONS

Phantom size (TR-I):



Phantom size (TR-J):

