

**Caution:**

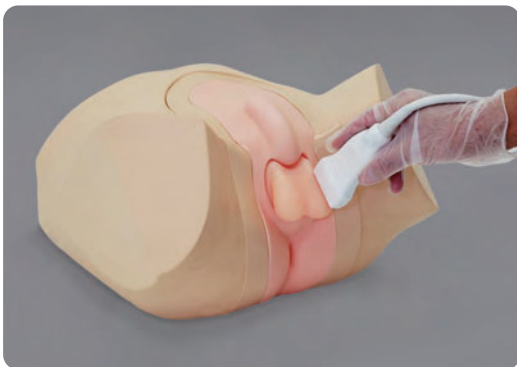
Do not mark on the phantom with pen or leave printed materials contacted on its surface.  
Ink marks on the phantom will be irremovable.

US-11

# Scrotal Ultrasound Phantom

## Instruction Manual

### Contents



● **Please read before training**

General information ..... P. 1

● **Preparation**

1. Attach the scrotum ..... P. 2

● **Training**

2. Training session ..... P. 2

3. After training ..... P. 2

#### Repeated training to acquire skills in safe and painless exam

Ultrasound evaluation of the scrotum is an effective, safe and painless imaging method to assess male reproductive organs for tumors, inflammation and potential causes of infertility. The ultrasound phantom provides sonographers, residents in training and physicians an opportunity for hands-on training with an ultrasound machine.

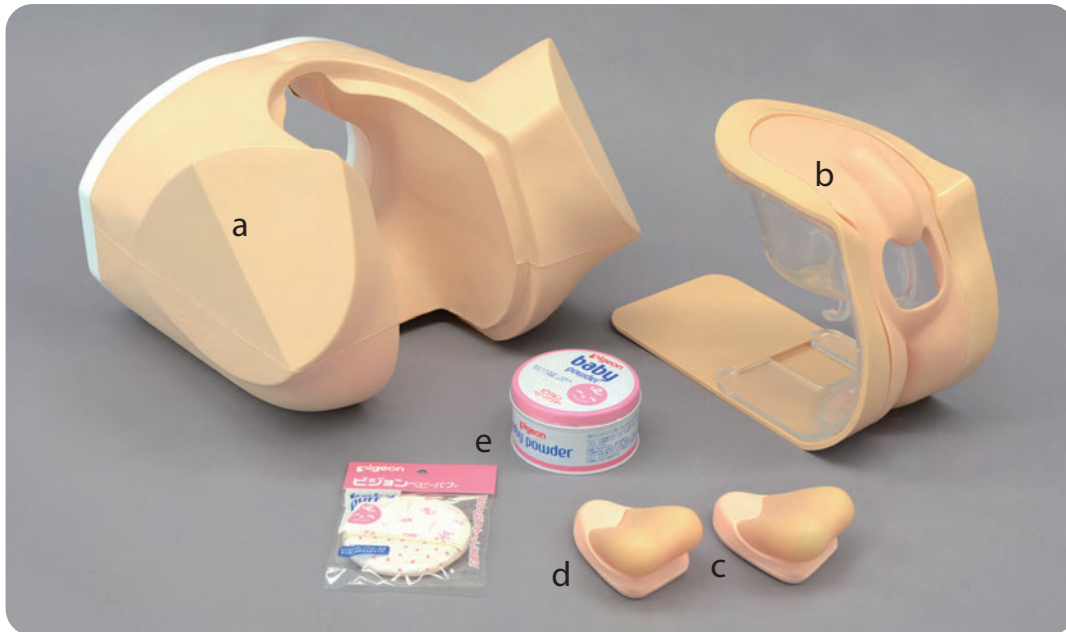
Interchangeable normal and cancerous phantom inserts provide examples of anatomy and pathology of the male genitalia to simulate a realistic experience.

● **Features**

1. Two types of interchangeable scrota: normal and pathologic
2. Excellent ultrasound image quality
3. Compatible with any ultrasound system

**Set includes**

Before your first use, please ensure that you have all components listed below.



- |                               |   |                        |   |
|-------------------------------|---|------------------------|---|
| a. Lower torso manikin .....  | 1 | e. Talcum powder ..... | 1 |
| b. Phantom holder .....       | 1 | Storage case .....     | 1 |
| (outer and inner frame, skin) |   | Instruction manual     |   |
| c. Normal scrotum .....       | 1 |                        |   |
| d. Pathological scrotum ..... | 1 |                        |   |

**⚠ DOs and DON'T s**

**DO s**

Handle with care  
The materials for phantom and models are special composition of soft resin. Please handle with care at all times.

**Cleaning and care**

Please clean the phantom completely every time after you finish the training. Remaining ultrasound gel on the phantom may deteriorate the product.

Keep the training set at room temperature, away from heat, moisture and direct sunlight.

**DON'T s**

Never wipe the phantom or models with thinner or organic solvent.

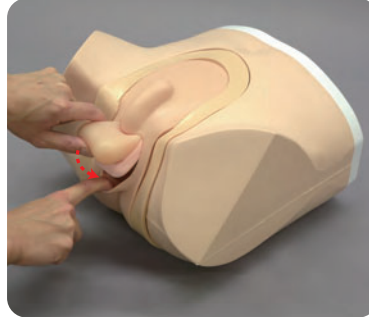
Do not mark on the phantom with pen or leave printed materials contacted on their surface. Ink marks on the models will be irremovable.

Please note: The color of the phantom may change overtime. However, please be assured that this is not deterioration of the material and the ultrasonic features of the phantom will stay unaffected.

### 1 Attach the scrotum

1. Attach the scrotum to the phantom holder.

Insert the scrotum to the opening. First fit the upper side of the scrotum. Then push down the lower lip of the opening with a finger and push in the lower edge of the scrotum into the opening.



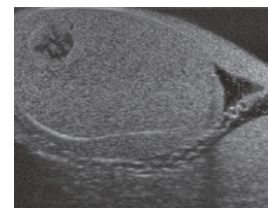
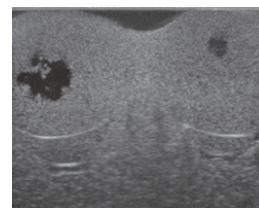
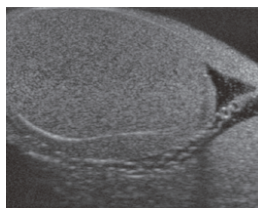
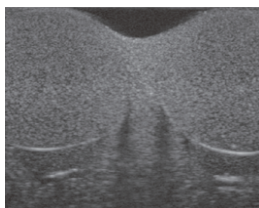
### 2 Training session

1. Apply ultrasound gel on the scrotum.

The phantom can be scanned with actual ultrasound devices.



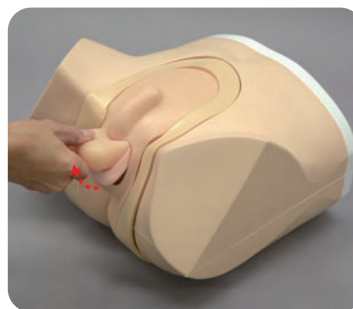
Examples of ultrasound images



Normal

Testicular cancer

### 3 After training

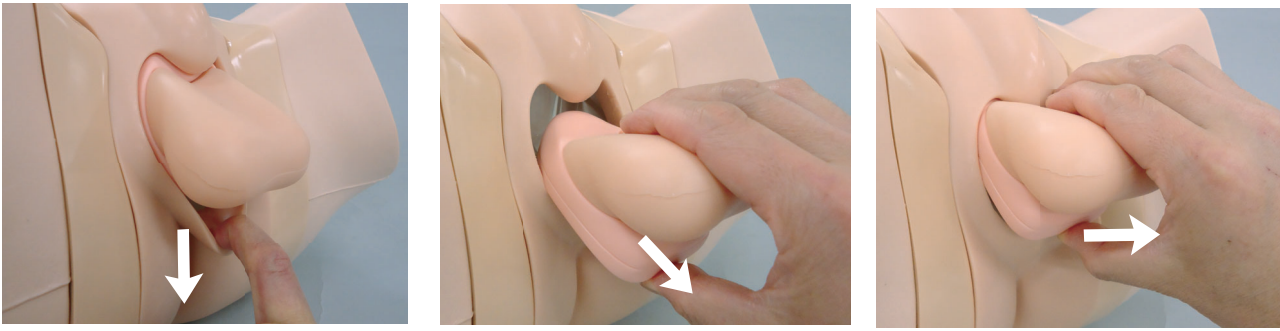


Wipe the remaining gel completely with wet tissues.

The scrotum can be removed from the phantom holder and cleaned with water. Refer to next page.

Pull the lower edge of the phantom to disengage, completely dry all cleaned scrotum units, skin and torso models and apply talcum powder before storing.

## 4 Disengaging the scrotum unit

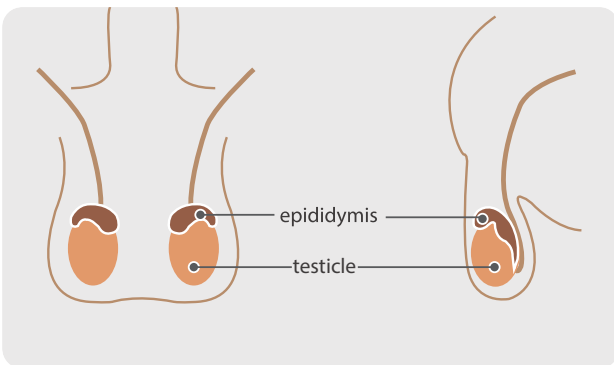


When disengaging the scrotum unit, pull down the lower edge of the phantom skin, then pull out the lower side of the unit. Disengage the unit from the phantom skin as shown in the above pictures.



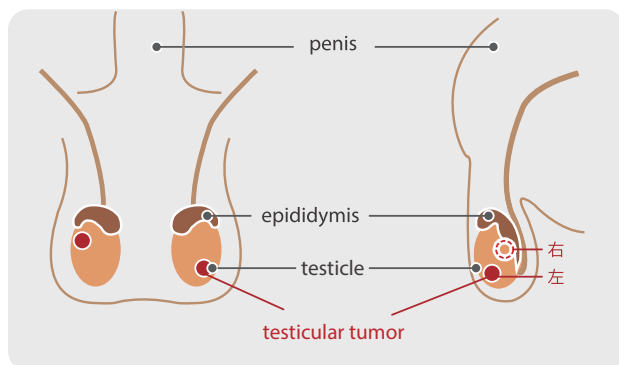
### Do not pull on the scrotum.

This part is molded in one piece. Pulling on the scrotum causes a tear between the scrotum and the base.



#### Normal Unit

Scrotum, Testicle, Epididymis, Penis



#### Tumor Unit

Scrotum, Testicle, Epididymis, Penis, Testicular Tumor (One on each side, 10 mm in diameter)

### Caution

Do not mark on the phantom with pen or leave printed materials contacted on its surface. Ink marks on the phantom will be irremovable.

The contents of this manual are subject to change without prior notice.

No part of this instruction manual may be reproduced or transmitted in any form without permission from the manufacturer. Please contact manufacturer for extra copies of this manual which may contain important updates and revisions.

Please contact manufacturer with any discrepancies, typos, or mistakes in this manual or product feedback. Your cooperation is greatly appreciated.

## KYOTO KAGAKU co.,LTD

URL:<http://www.kyotokagaku.com> e-mail:[rw-kyoto@kyotokagaku.co.jp](mailto:rw-kyoto@kyotokagaku.co.jp)

#### ■ Main Office and Factory

15 Kitanechoya-cho Fushimi-ku Kyoto 612-8388, Japan  
Telephone : 81-75-605-2510  
Facsimile : 81-75-605-2519

#### ■ KyotoKagaku America Inc.

USA,Canada,and South America  
3109 Lomita Boulevard, Torrance, CA 90505 ,USA  
Telephone : 1-310-325-8860  
Facsimile : 1-310-325-8867



15 Kitanechoya-cho Fushimi-ku  
Kyoto, Japan 612-8388  
Telephone : +81-75-605-2510  
F a x : +81-75-605-2519

Dear customer,

**Note**

Thank you for choosing our ultra sound phantom.

There may be a case that the surface of phantom is in a wet condition.

The ultra sound image will not be affected. In such case, wipe the surface with medical use alcohol. **Do not wipe the surface with strong solvent such as benzene.**

If you have any questions regarding this matter, please do not hesitate to contact us at any time.

Faithfully yours,

Kyoto Kagaku Co., Ltd.

Email: [rw-kyoto@kyotokagaku.co.jp](mailto:rw-kyoto@kyotokagaku.co.jp)